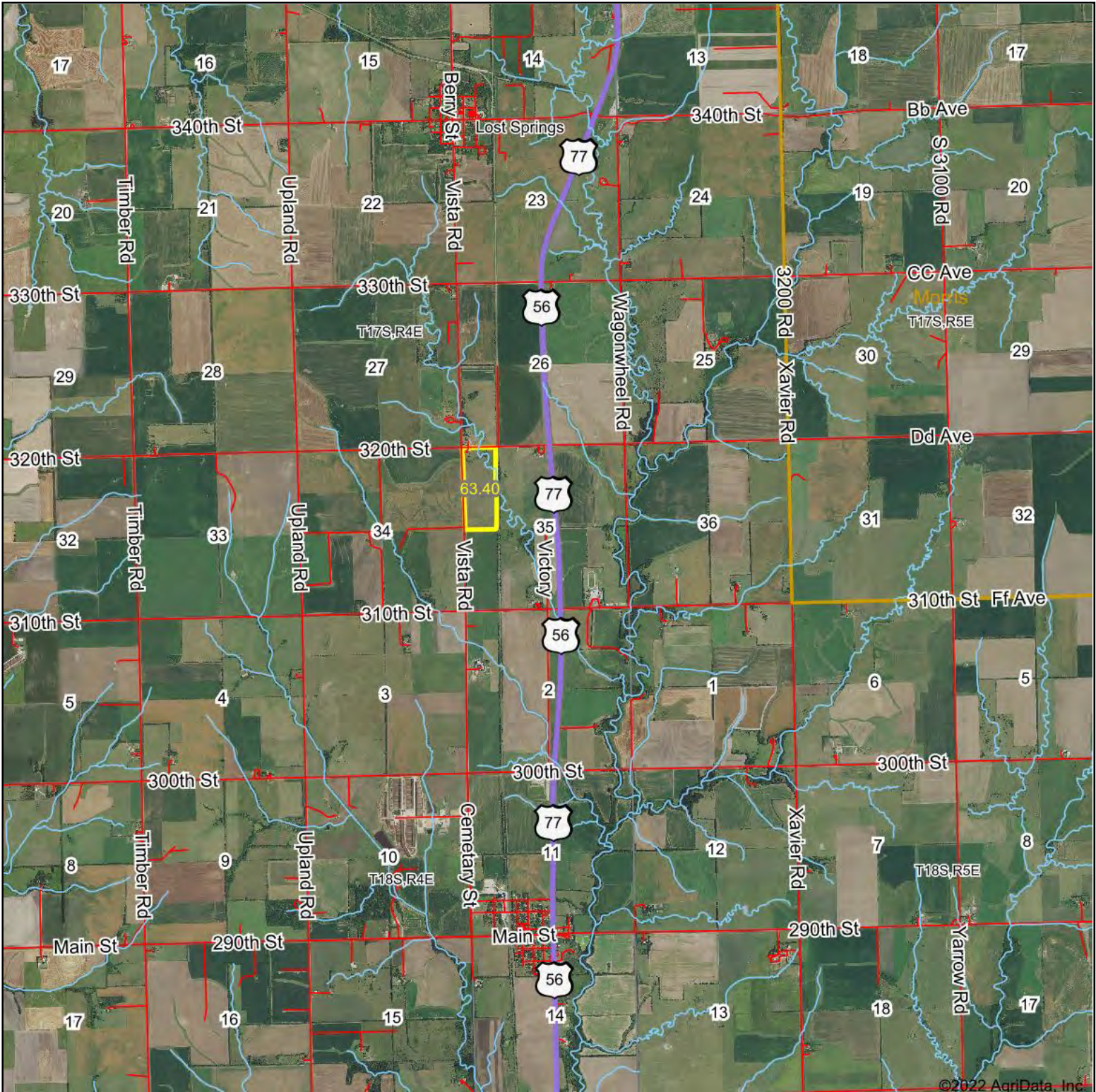


Aerial Map



Map Center: 38° 31' 40.04, -96° 57' 26.67

0ft 5039ft 10079ft

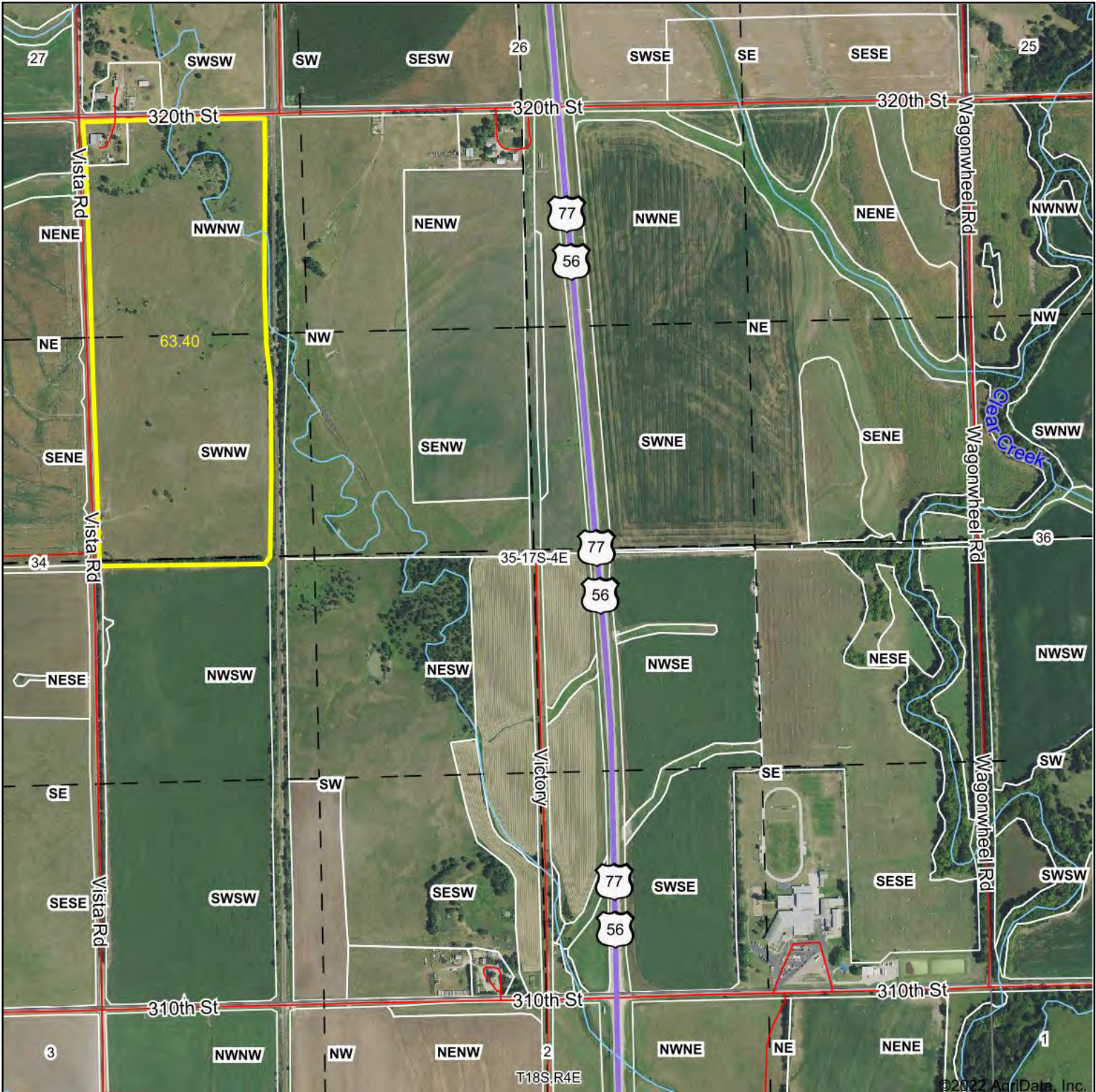
35-17S-4E
Marion County
Kansas



10/19/2022

Maps Provided By:
 **surety**
CUSTOMIZED ONLINE MAPPING
© AgriData, Inc. 2021 www.AgriDataInc.com

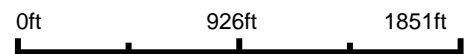
Aerial Map



©2022 AgriData, Inc.



Map Center: 38° 31' 46.91, -96° 57' 26.62



35-17S-4E
Marion County
Kansas

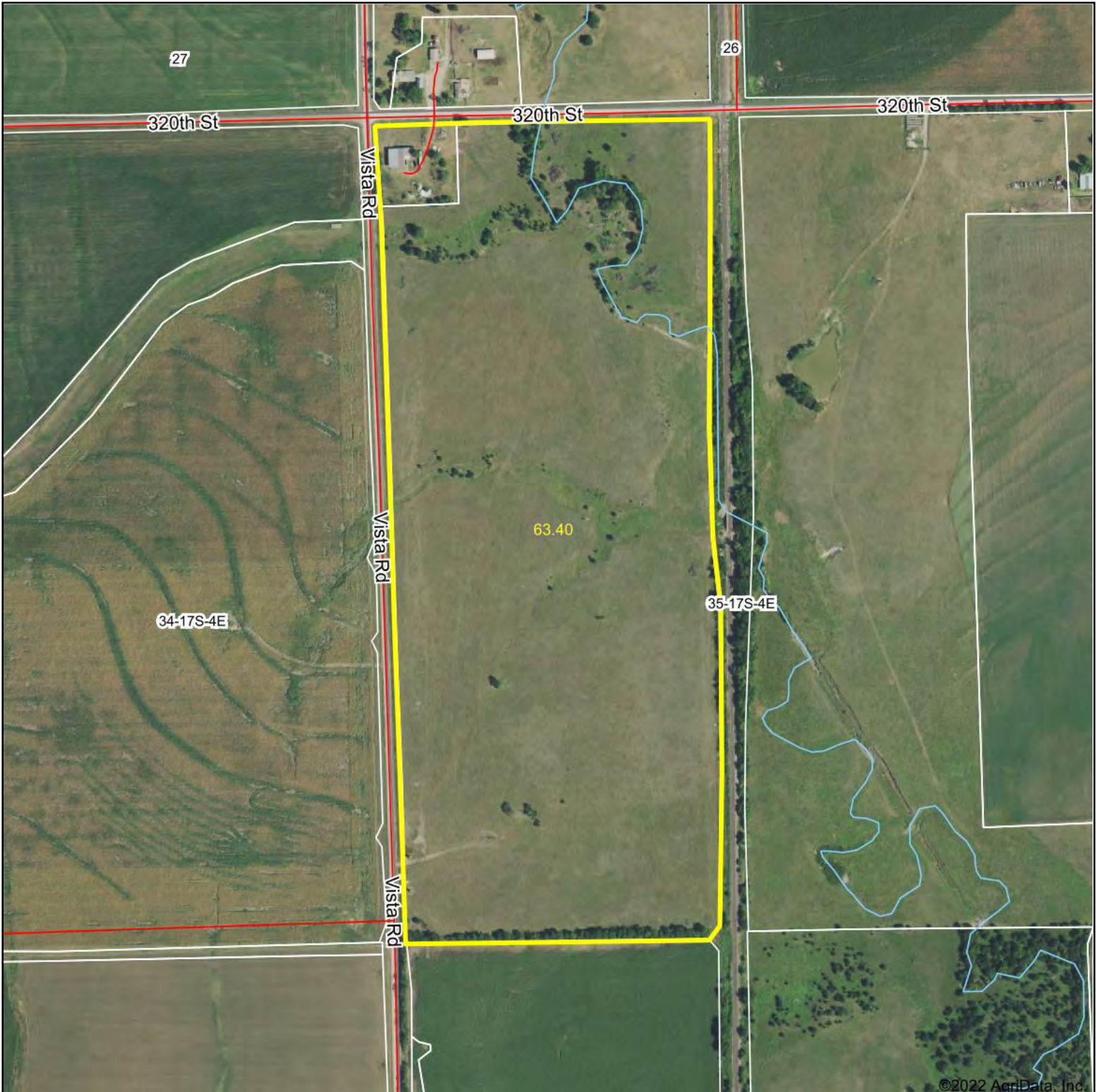


10/19/2022

Maps Provided By:
 **surety**
CUSTOMIZED ONLINE MAPPING
© AgriData, Inc. 2021 www.AgriDataInc.com

Field borders provided by Farm Service Agency as of 5/21/2008.

Aerial Map



Map Center: 38° 31' 58.96, -96° 57' 54



35-17S-4E
Marion County
Kansas

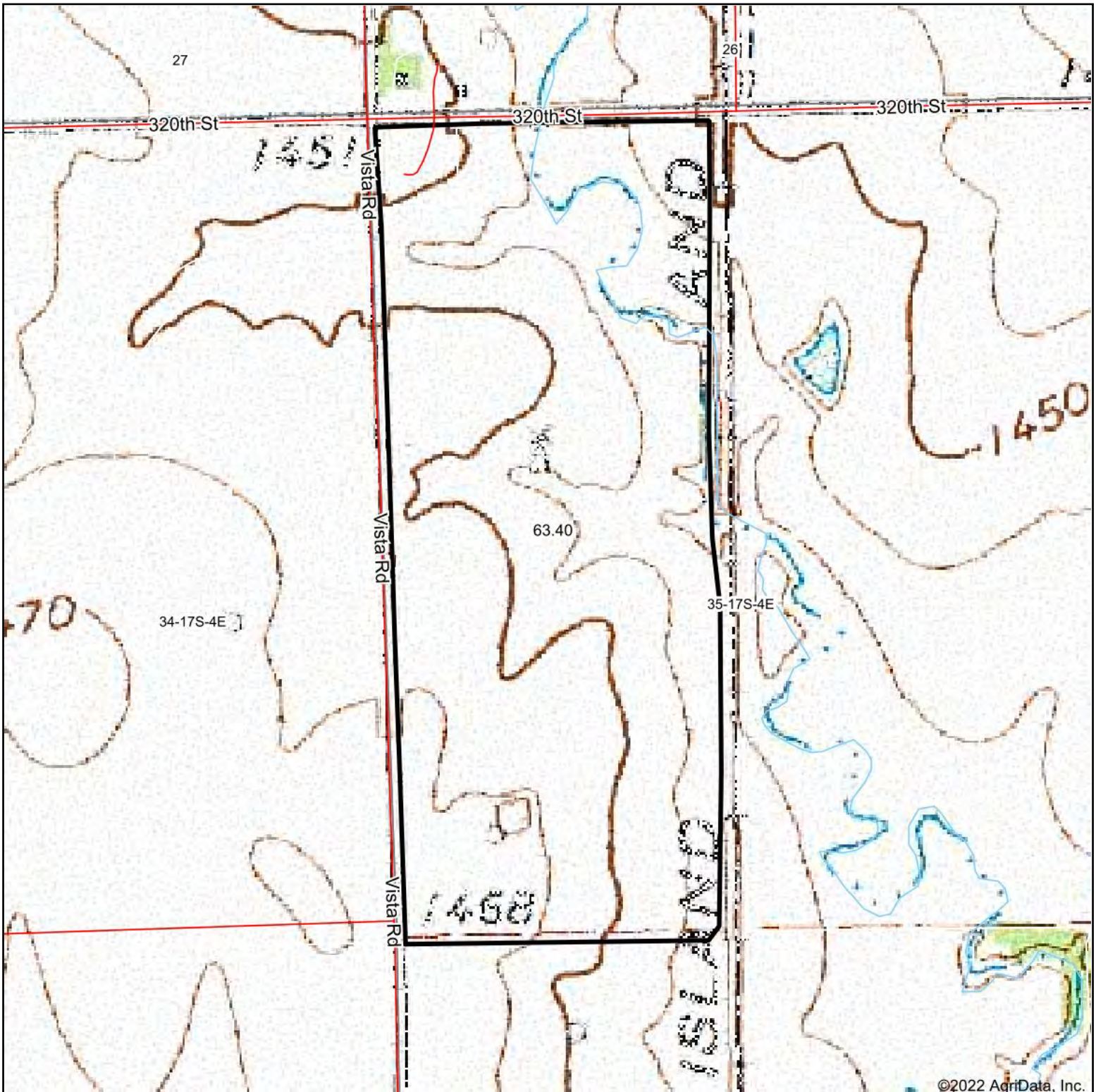


10/19/2022

Maps Provided By:
 **surety**
CUSTOMIZED ONLINE MAPPING
© AgriData, Inc. 2021 www.AgriDataInc.com

Field borders provided by Farm Service Agency as of 5/21/2008.

Topography Map



©2022 AgriData, Inc.

map center: 38° 31' 58.96, -96° 57' 54



35-17S-4E
Marion County
Kansas



10/19/2022



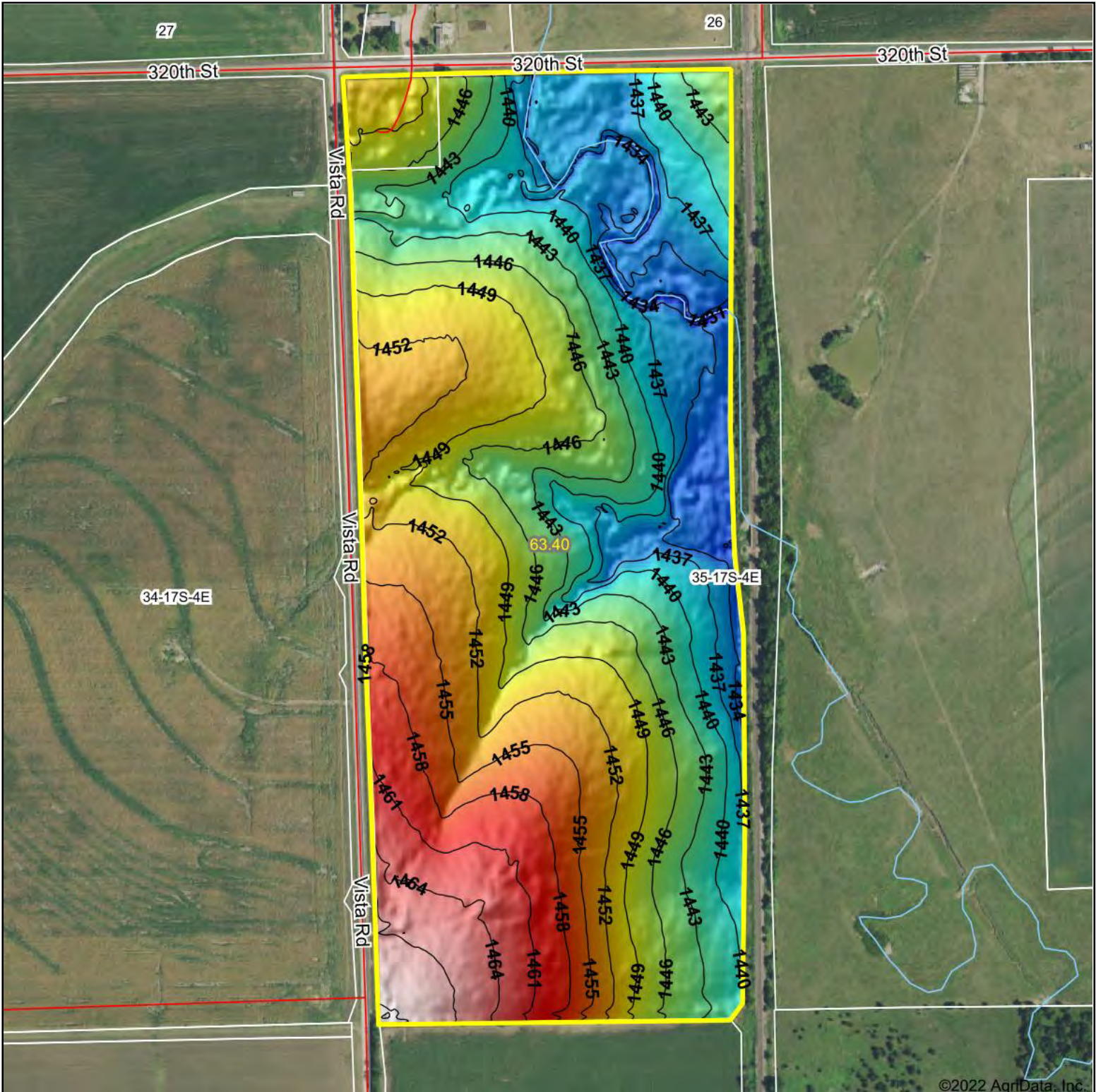
Maps Provided By:



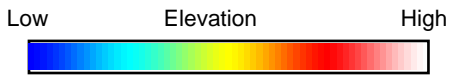
© AgriData, Inc. 2021

www.AgriDataInc.com

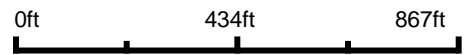
Topography Hillshade



©2022 AgriData, Inc.



Source: USGS 3 meter dem



Interval(ft): 3

Min: 1,428.7

Max: 1,470.2

Range: 41.5

Average: 1,447.2

Standard Deviation: 8.83 ft



10/19/2022

35-17S-4E
Marion County
Kansas

map center: 38° 31' 58.96, -96° 57' 54



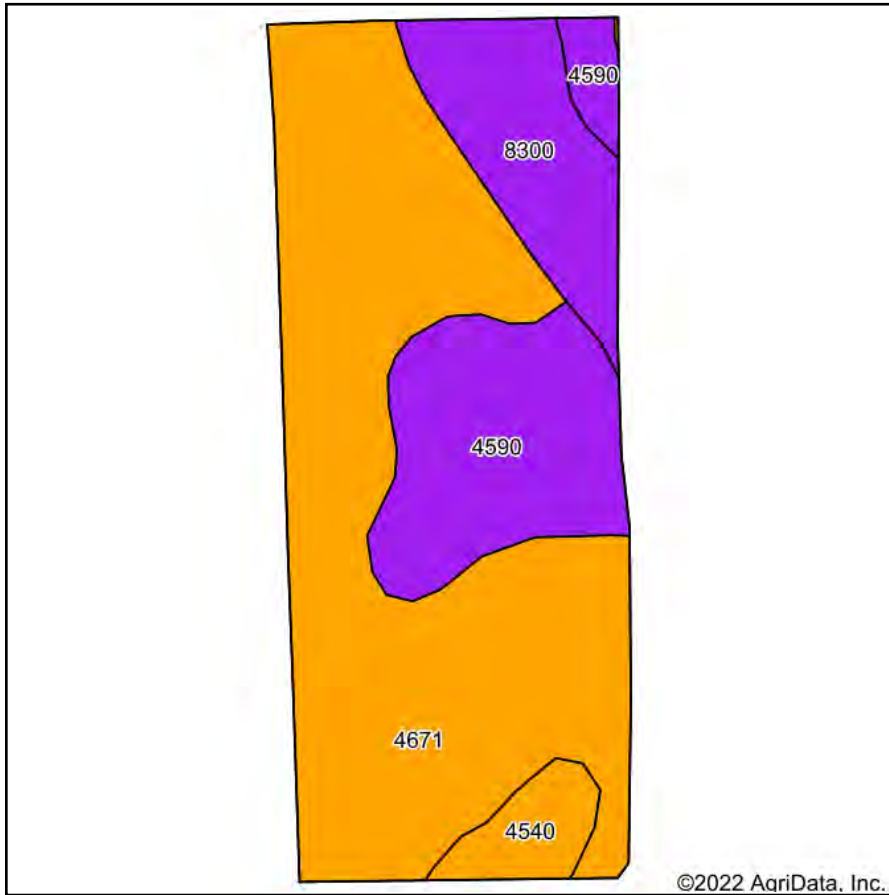
Maps Provided By:



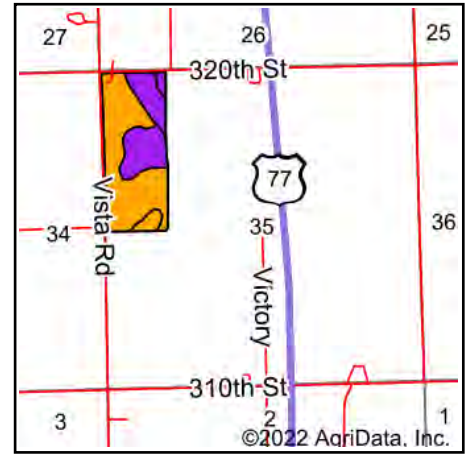
© AgriData, Inc. 2021 www.AgriDataInc.com

Field borders provided by Farm Service Agency as of 5/21/2008.

Soils Map



Soils data provided by USDA and NRCS.



State: **Kansas**
 County: **Marion**
 Location: **35-17S-4E**
 Township: **Lost Springs**
 Acres: **63.4**
 Date: **10/19/2022**



Maps Provided By:



© AgriData, Inc. 2021

www.AgriDataInc.com



Area Symbol: KS115, Soil Area Version: 18

Code	Soil Description	Acres	Percent of field	Non-Irr Class Legend	Non-Irr Class *c	Irr Class *c	*n NCCPI Soybeans
4671	Irwin silty clay loam, 1 to 3 percent slopes	39.26	61.9%		III s	III s	56
4590	Clime-Sogn complex, 3 to 20 percent slopes	13.29	21.0%		V I e		34
8300	Verdigris silt loam, channeled, 0 to 2 percent slopes, frequently flooded	8.15	12.9%		V w		41
4540	Clime silty clay loam, 1 to 3 percent slopes	2.70	4.3%		III e	III e	43
Weighted Average					3.89	*-	*n 48.9

*n: The aggregation method is "Weighted Average using all components"

*c: Using Capabilities Class Dominant Condition Aggregation Method

*- Irr Class weighted average cannot be calculated on the current soils data due to missing data.

Soils data provided by USDA and NRCS.