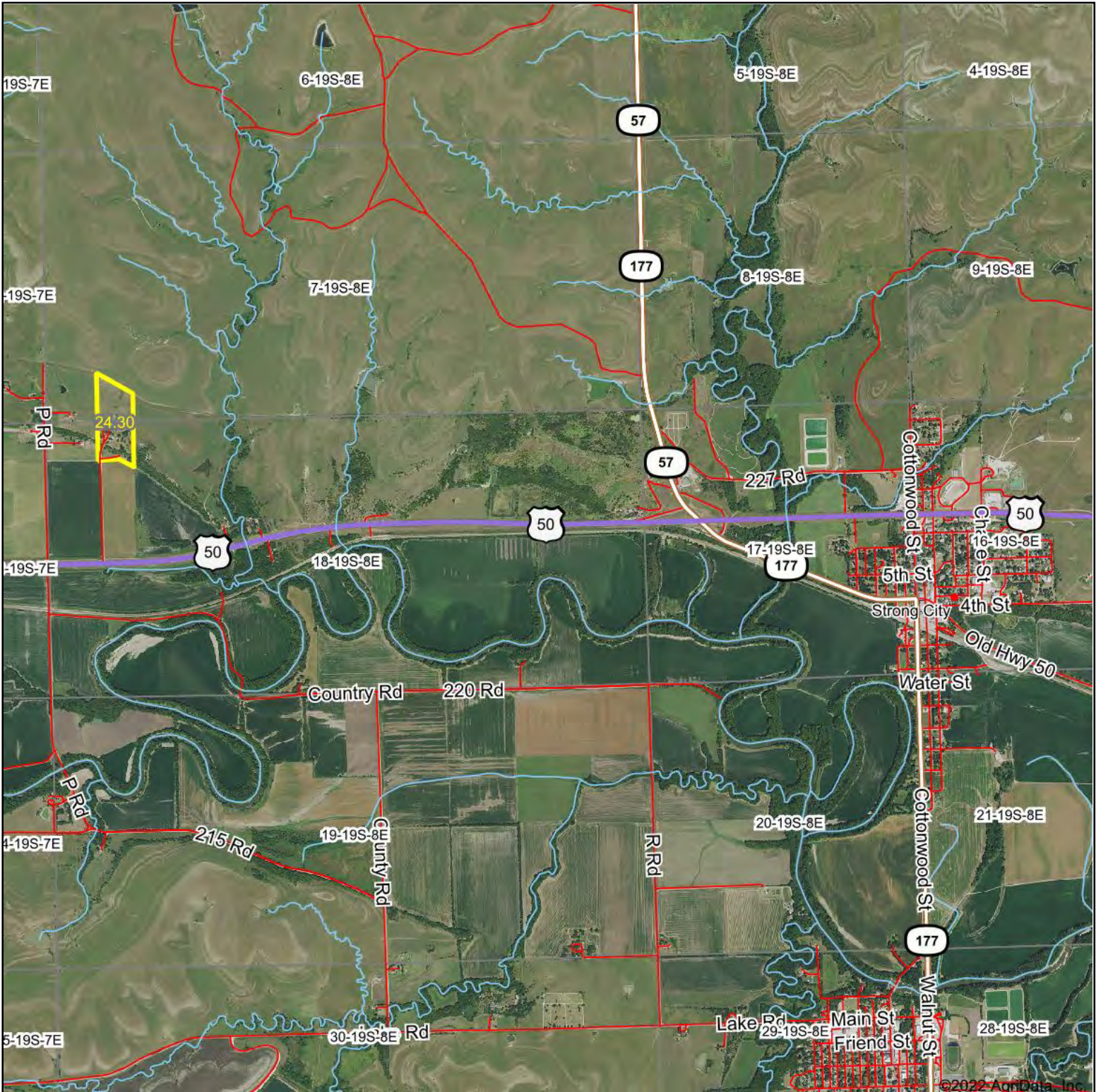


Aerial Map



Map Center: 38° 23' 55.77, -96° 33' 50.34

0ft 3032ft 6063ft

18-19S-8E
Chase County
Kansas



6/24/2022

Griffin
Real Estate
& Auction



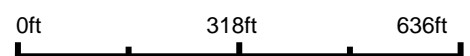
Maps Provided By:
surety
CUSTOMIZED ONLINE MAPPING
© AgriData, Inc. 2021 www.AgriDataInc.com

Aerial Map



Griffin
Real Estate
& Auction

Map Center: 38° 24' 22.57, -96° 35' 35.3



7-19S-8E
Chase County
Kansas

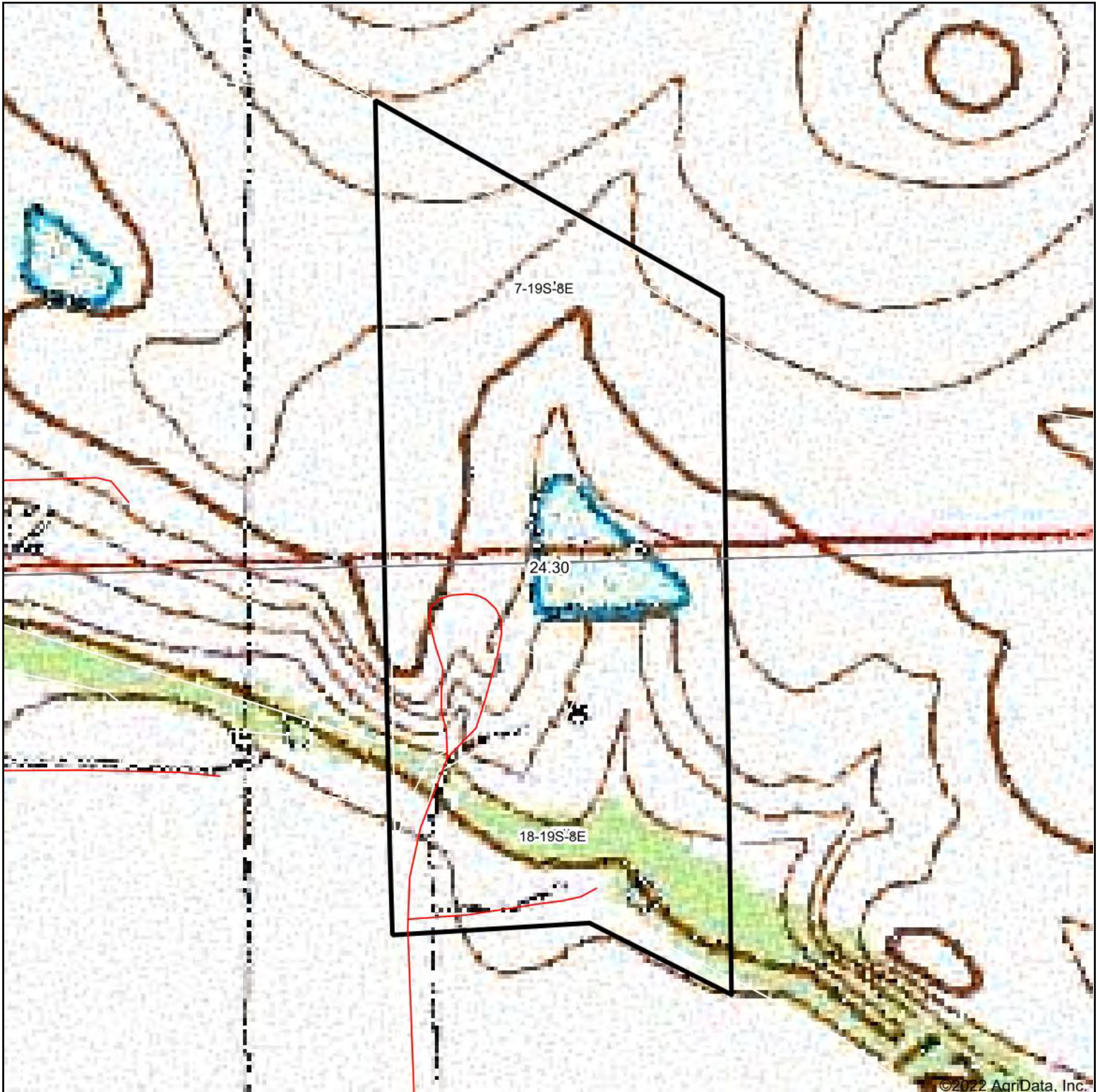


6/24/2022

Maps Provided By:
 **surety**[®]
CUSTOMIZED ONLINE MAPPING
© AgriData, Inc. 2021 www.AgriDataInc.com

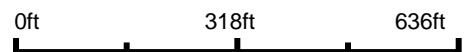
Field borders provided by Farm Service Agency as of 5/21/2008.

Topography Map



©2022 AgriData, Inc.

map center: 38° 24' 22.57, -96° 35' 35.3



Griffin
Real Estate
& Auction

7-19S-8E
Chase County
Kansas



6/24/2022

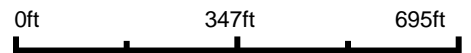
Maps Provided By:
 **surety**
CUSTOMIZED ONLINE MAPPING
© AgriData, Inc. 2021 www.AgriDataInc.com

Field borders provided by Farm Service Agency as of 5/21/2008.

Topography Contours



Source: USGS 3 meter dem
 Interval(ft): 3.0
 Min: 1,188.4
 Max: 1,282.3
 Range: 93.9
 Average: 1,237.5
 Standard Deviation: 23.03 ft

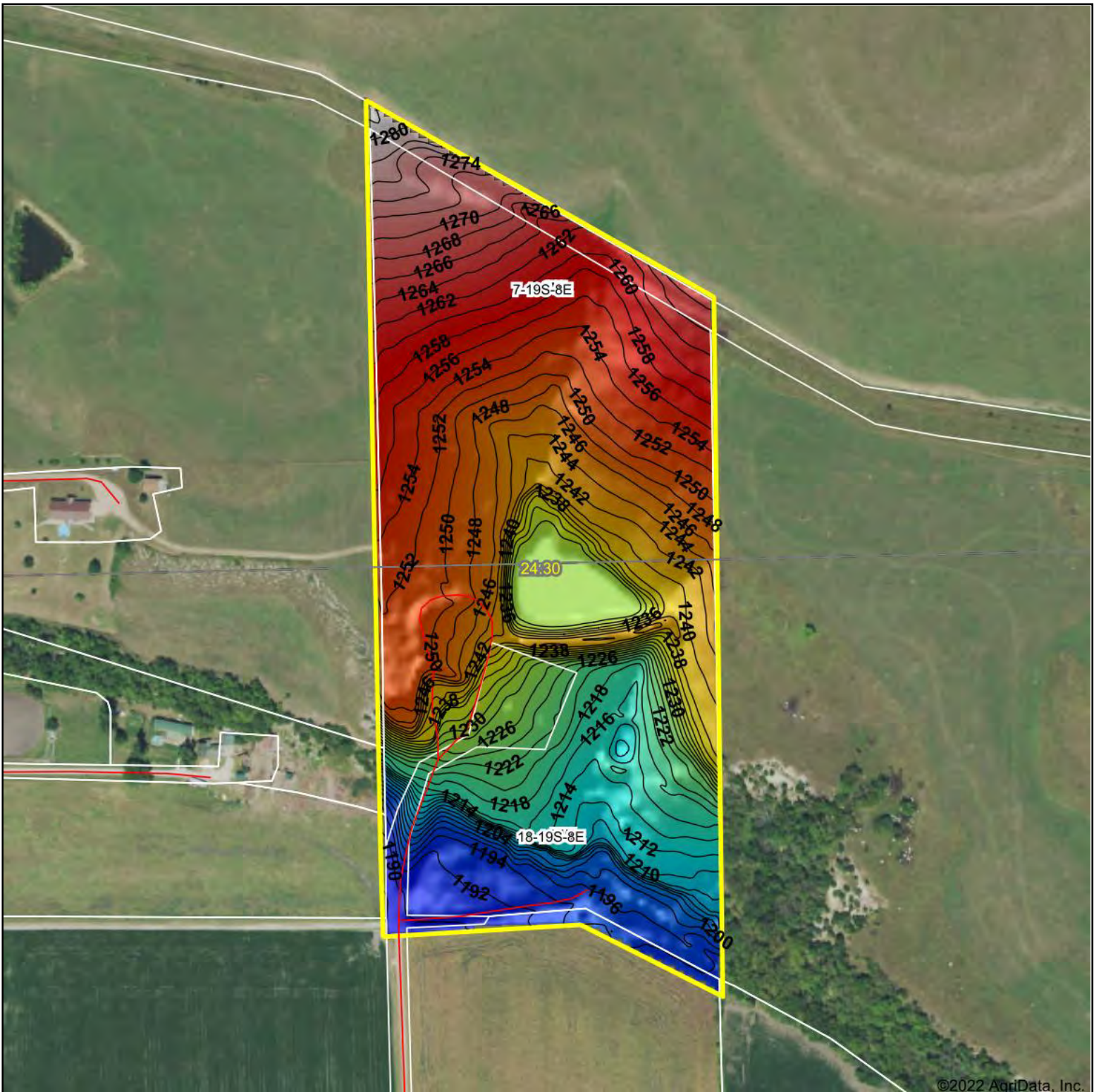


6/24/2022

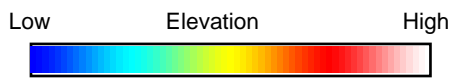
7-19S-8E
Chase County
Kansas

Map Center: 38° 24' 22.57, -96° 35' 35.3

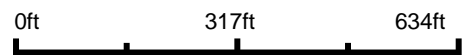
Topography Hillshade



©2022 AgriData, Inc.



Source: USGS 3 meter dem



Griffin
Real Estate
& Auction

Interval(ft): 2

Min: 1,188.4

Max: 1,282.3

Range: 93.9

Average: 1,237.5

Standard Deviation: 23.03 ft



6/24/2022

7-19S-8E
Chase County
Kansas

map center: 38° 24' 22.57, -96° 35' 35.3

Maps Provided By:
surety
CUSTOMIZED ONLINE MAPPING

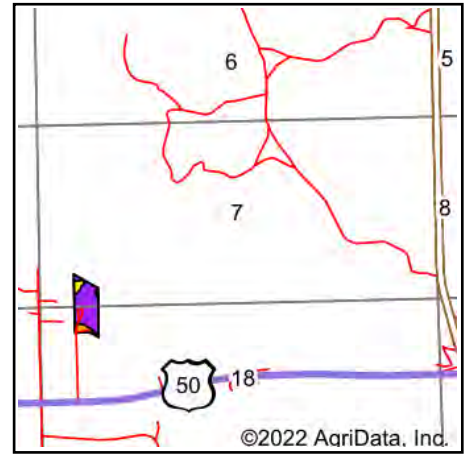
© AgriData, Inc. 2021 www.AgriDataInc.com

Field borders provided by Farm Service Agency as of 5/21/2008.

Soils Map



Soils data provided by USDA and NRCS.



State: **Kansas**
 County: **Chase**
 Location: **7-19S-8E**
 Township: **Strong**
 Acres: **24.3**
 Date: **6/24/2022**



Area Symbol: KS017, Soil Area Version: 17

| Code | Soil Description | Acres | Percent of field | Non-Irr Class Legend | Non-Irr Class *c | Irr Class *c | *n NCCPI Soybeans |
|-------------------------|--|-------|------------------|----------------------|------------------|--------------|-------------------|
| 4590 | Clime-Sogn complex, 3 to 20 percent slopes | 19.32 | 79.5% | | Vle | | 34 |
| 3617 | Solomon silty clay, occasionally flooded | 2.75 | 11.3% | | Illw | Illw | 22 |
| 4605 | Dwight silt loam, 1 to 3 percent slopes | 1.93 | 7.9% | | IVs | IVs | 28 |
| 4783 | Tully silty clay loam, 3 to 7 percent slopes | 0.30 | 1.2% | | Ille | Ille | 60 |
| Weighted Average | | | | | 5.46 | *- | *n 32.5 |

*n: The aggregation method is "Weighted Average using all components"

*c: Using Capabilities Class Dominant Condition Aggregation Method

*- Irr Class weighted average cannot be calculated on the current soils data due to missing data.

Soils data provided by USDA and NRCS.