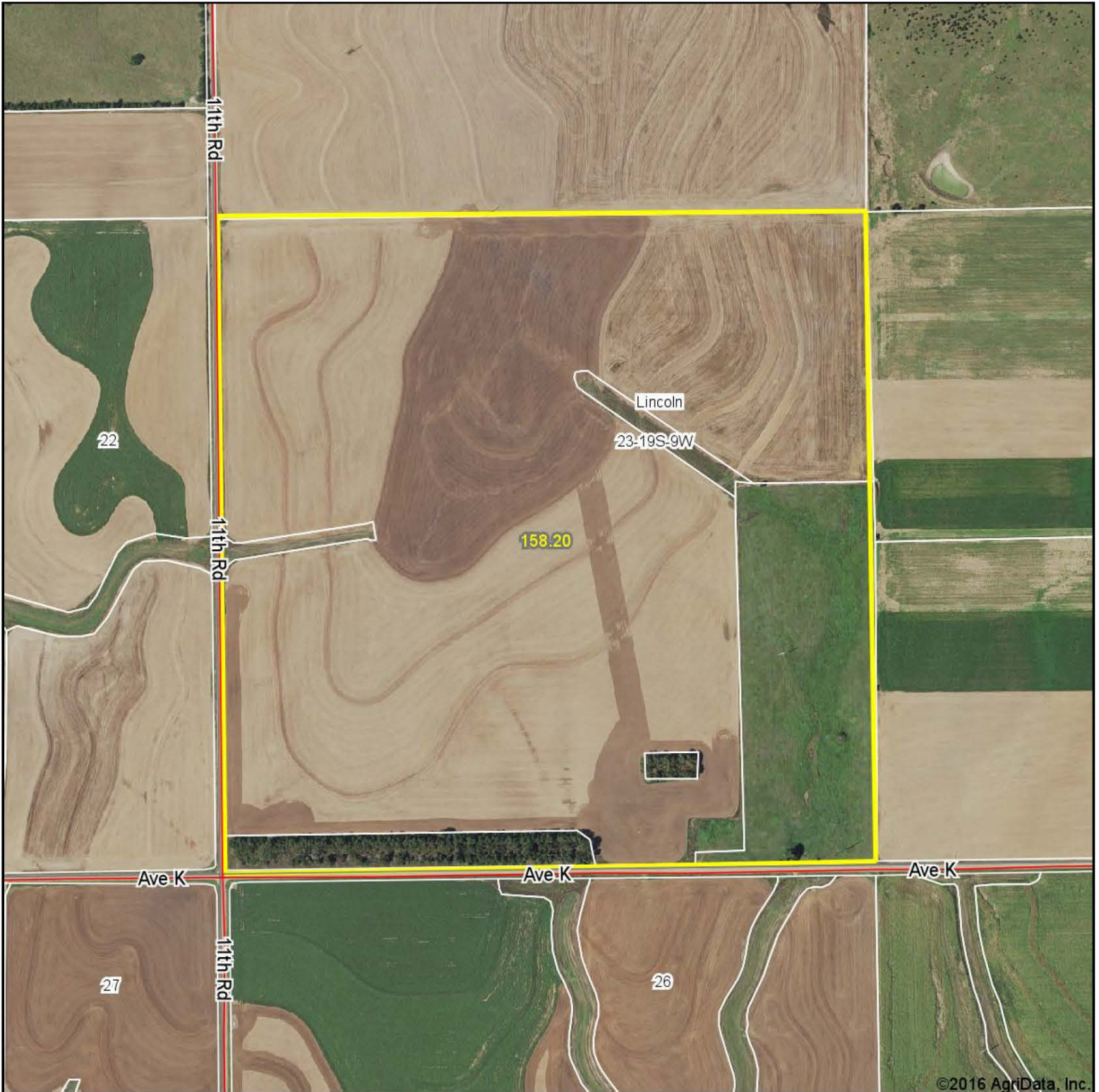


Aerial Map



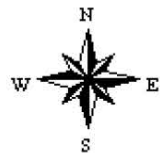
©2016 AgriData, Inc.

map center: 38° 22' 49.37", 98° 17' 22.84"



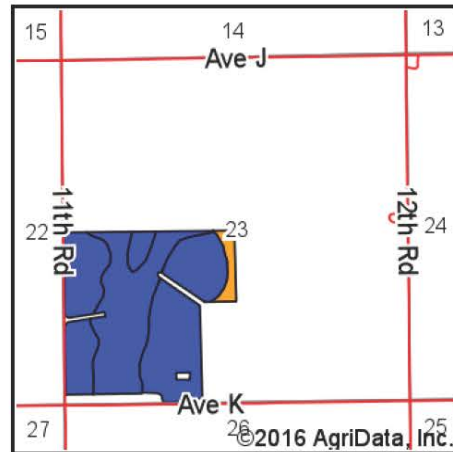
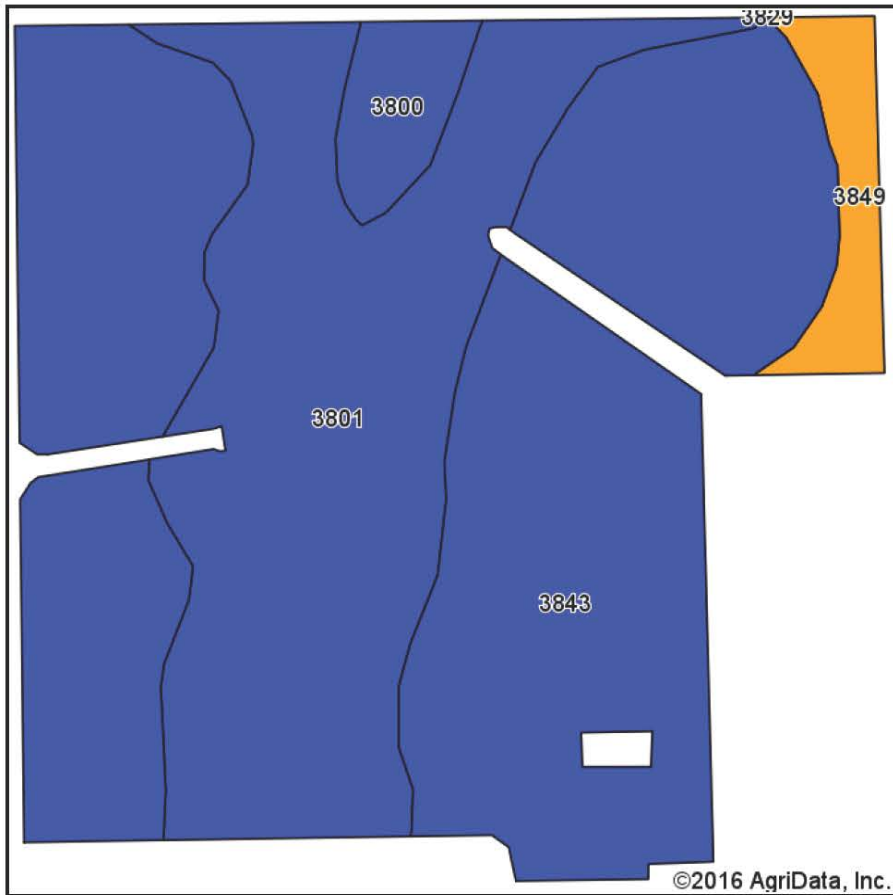
Maps Provided By:
 **surety**[®]
CUSTOMIZED ONLINE MAPPING
© AgriData, Inc. 2016 www.AgriDataInc.com

23-19S-9W
Rice County
Kansas



6/6/2016

Soils Map







State: **Kansas**
 County: **Rice**
 Location: **23-19S-9W**
 Township: **Lincoln**
 Acres: **131**
 Date: **6/6/2016**

Maps Provided By:

 CUSTOMIZED ONLINE MAPPING
 © AgriData, Inc. 2016 www.AgriDataInc.com



Area Symbol: KS159, Soil Area Version: 11

Code	Soil Description	Acres	Percent of field	Non-Irr Class Legend	Non-Irr Class *c	Irr Class *c
3843	Geary silt loam, 1 to 3 percent slopes	77.29	59.0%		Ile	Ile
3801	Crete silt loam, 1 to 3 percent slopes, loess plains and breaks	44.83	34.2%		Ile	Ile
3849	Geary-Clark complex, 3 to 7 percent slopes, eroded	4.73	3.6%		IIIe	IIIe
3800	Crete silt loam, 0 to 1 percent slopes, loess plains and breaks	4.15	3.2%		IIs	IIs

Area Symbol: KS159, Soil Area Version: 11

*c: Using Capabilities Class Dominant Condition Aggregation Method

Soils data provided by USDA and NRCS.