

Aerial Map



©2016 AgriData, Inc.

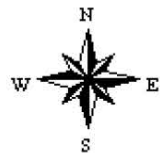
map center: 38° 21' 11.94, 96° 6' 0.07



Maps Provided By:

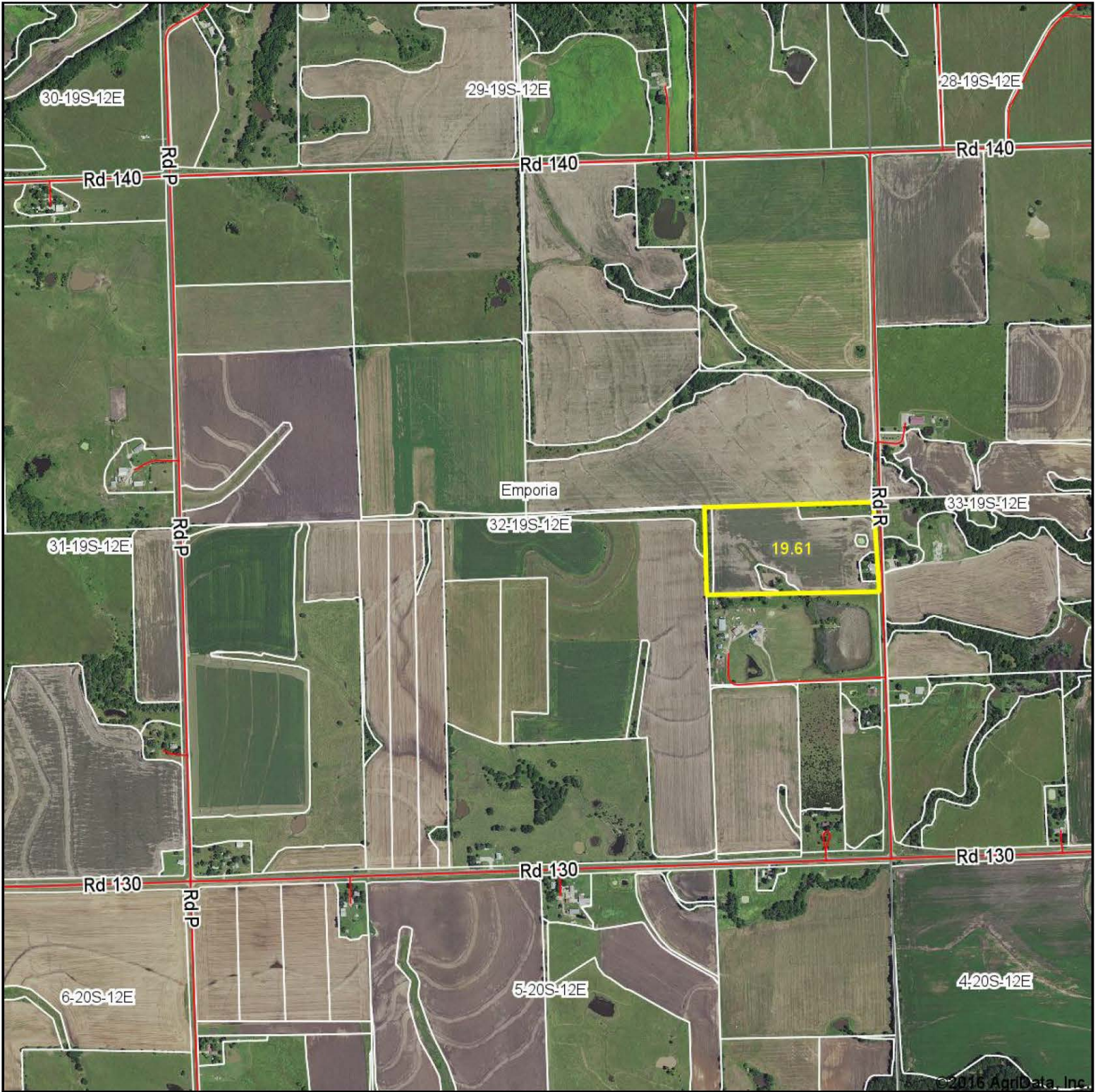
CUSTOMIZED ONLINE MAPPING
© AgriData, Inc. 2016 www.AgriDataInc.com

32-19S-12E
Lyon County
Kansas



6/16/2016

Aerial Map



©2016 AgriData, Inc.

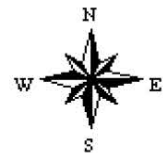
map center: 38° 21' 12.74, 96° 6' 23.32



Maps Provided By:

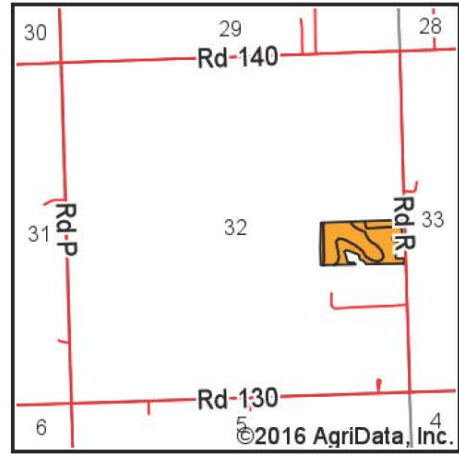
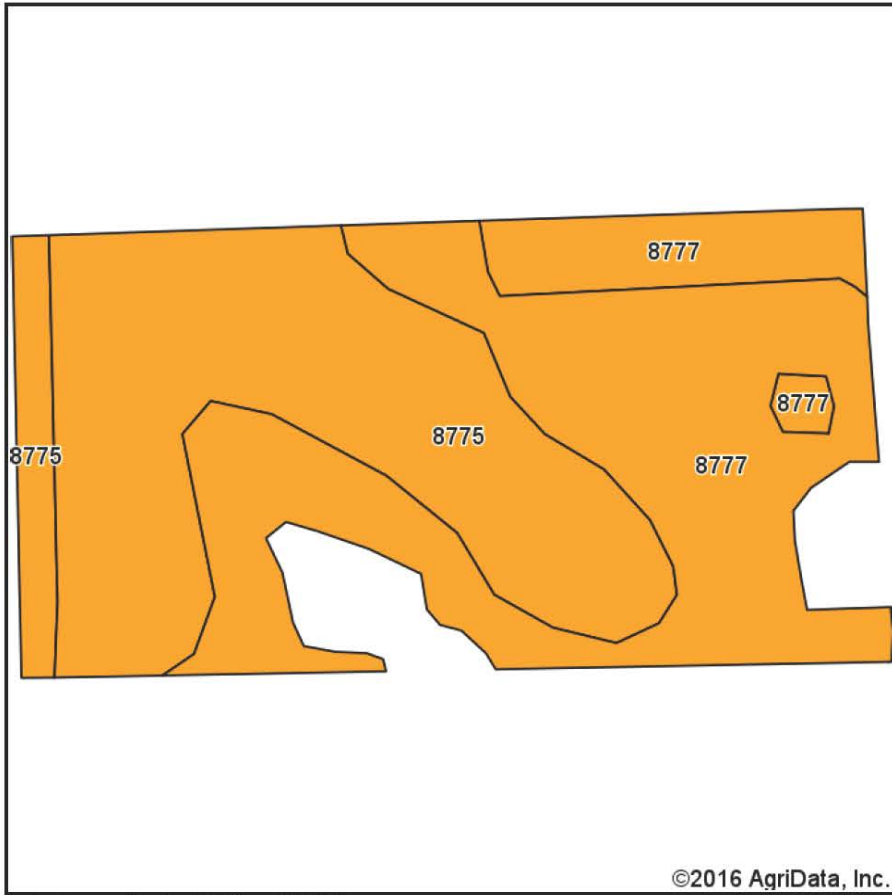
CUSTOMIZED ONLINE MAPPING
© AgriData, Inc. 2016 www.AgriDataInc.com

32-19S-12E
Lyon County
Kansas



6/22/2016

Soils Map



State: **Kansas**
 County: **Lyon**
 Location: **32-19S-12E**
 Township: **Emporia**
 Acres: **18.15**
 Date: **6/22/2016**

Maps Provided By:

 CUSTOMIZED ONLINE MAPPING
 © AgriData, Inc. 2016 www.AgriDataInc.com



Area Symbol: KS111, Soil Area Version: 14

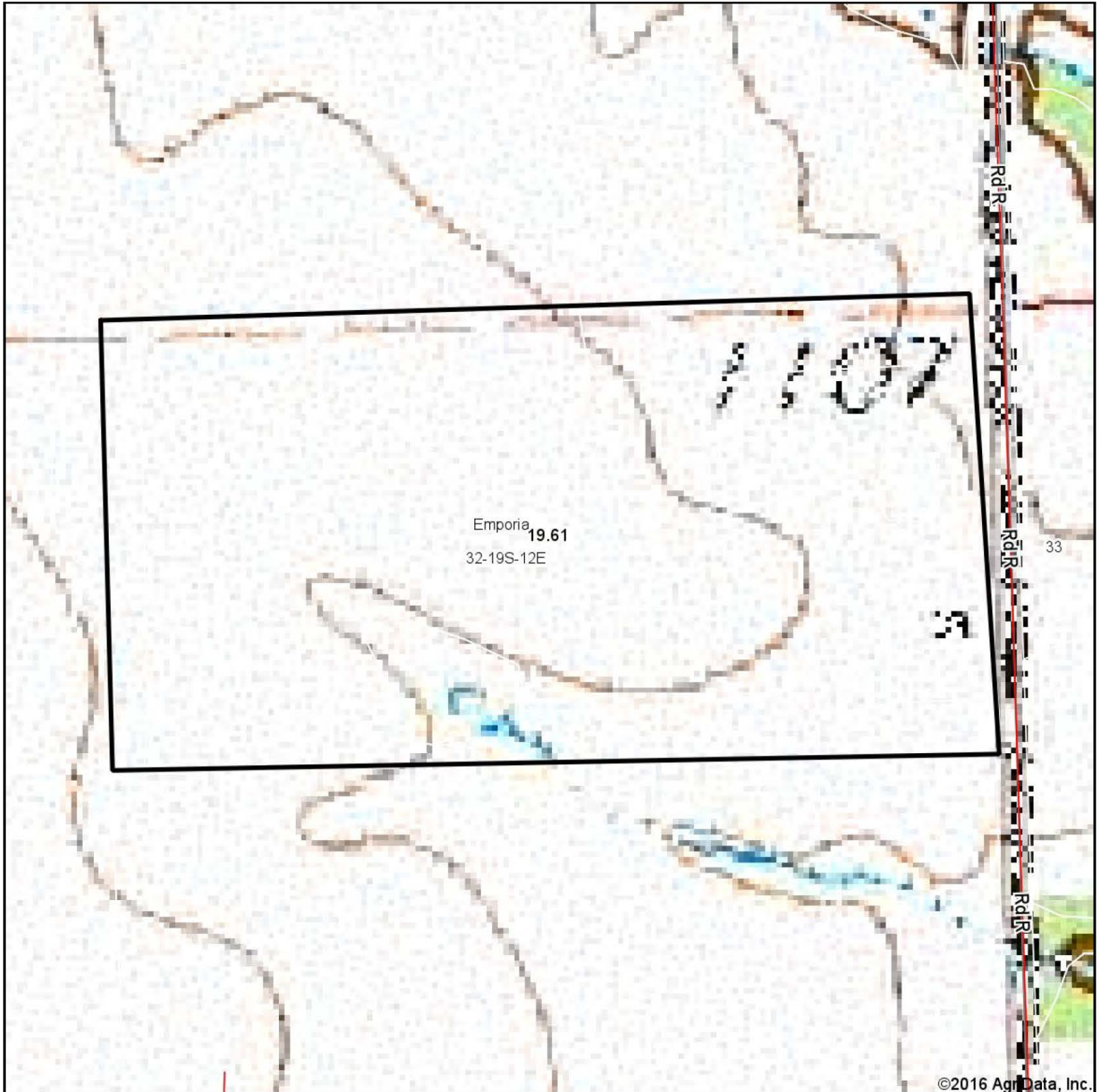
Code	Soil Description	Acres	Percent of field	Non-Irr Class Legend	Non-Irr Class *c
8777	Kenoma silty clay loam, 1 to 3 percent slopes, eroded	9.53	52.5%		IIIe
8775	Kenoma silt loam, 1 to 3 percent slopes	8.62	47.5%		IIIe

Area Symbol: KS111, Soil Area Version: 14

*c: Using Capabilities Class Dominant Condition Aggregation Method

Soils data provided by USDA and NRCS.

Topography Map

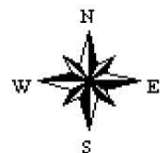


©2016 AgriData, Inc.

map center: 38° 21' 11.82, 96° 6' 0.32



32-19S-12E
Lyon County
Kansas



6/22/2016

Maps Provided By:



© AgriData, Inc. 2016

www.AgriDataInc.com