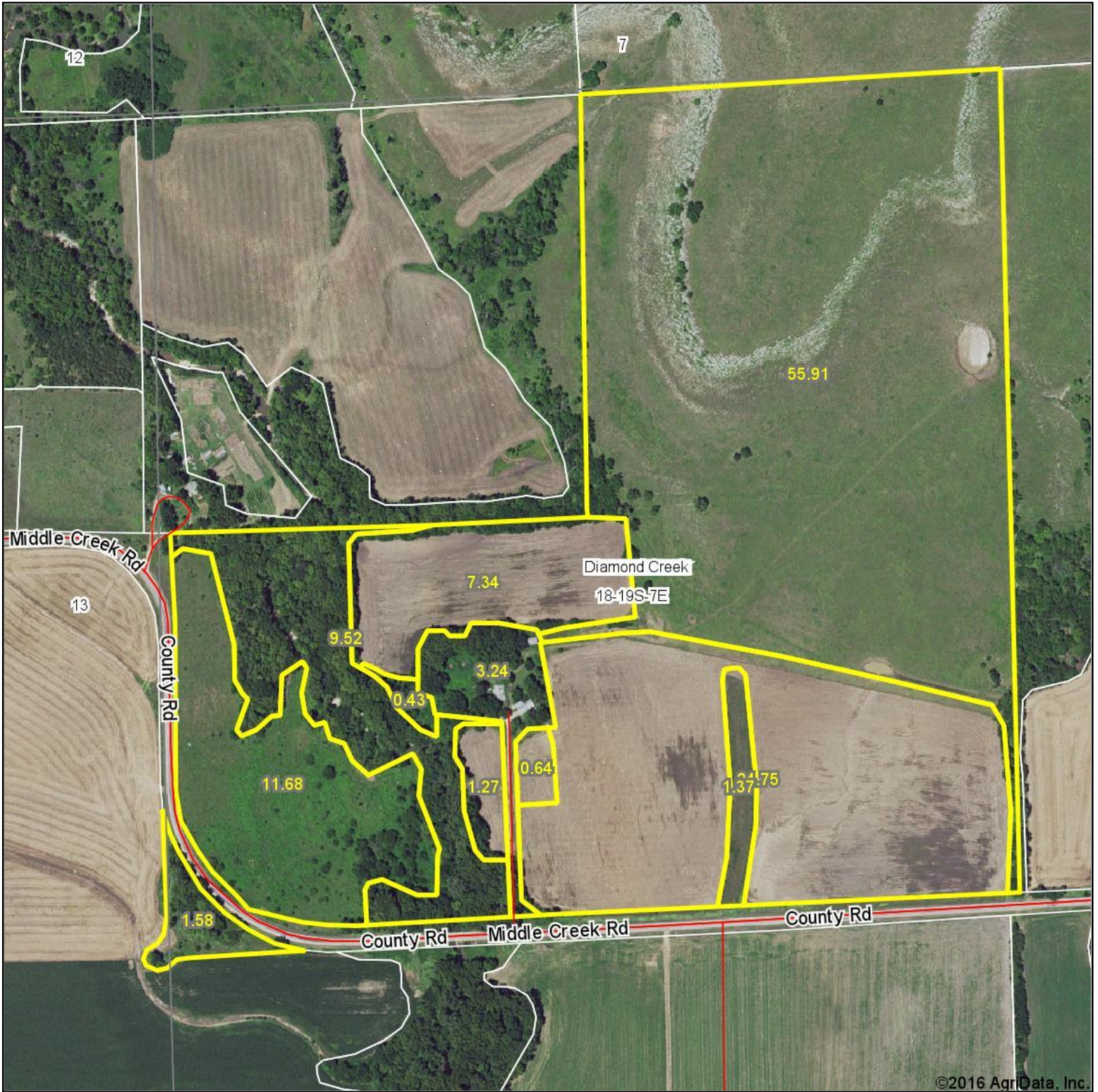
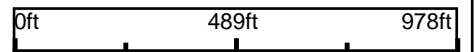


Aerial Map



map center: 38° 24' 7.84, -96° 42' 16.78



Maps Provided By:

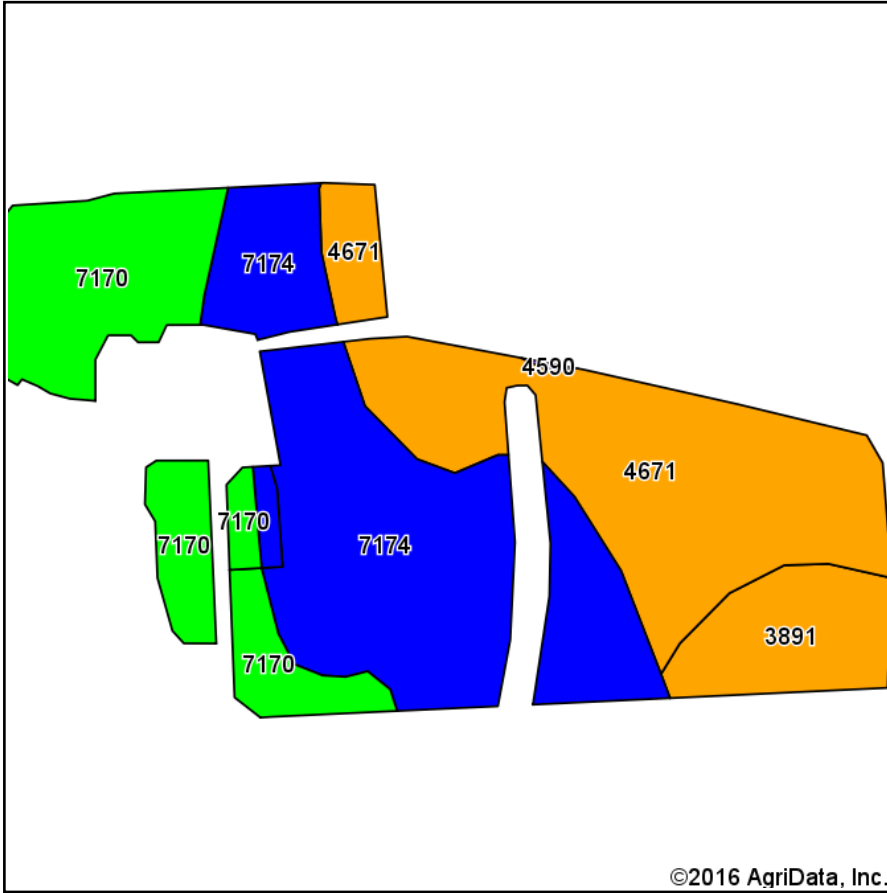
CUSTOMIZED ONLINE MAPPING
© AgriData, Inc. 2016 www.AgriDataInc.com

18-19S-7E
Chase County
Kansas

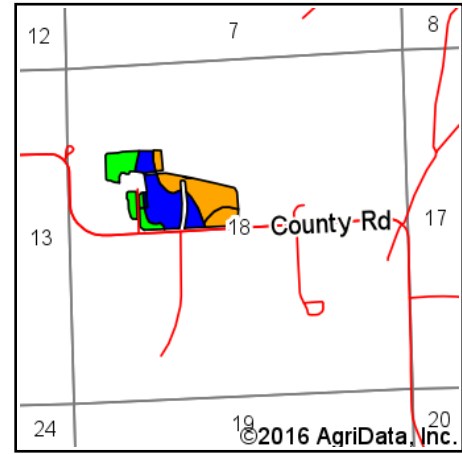


8/17/2016

Soils Map



Soils data provided by USDA and NRCS.



State: **Kansas**
 County: **Chase**
 Location: **18-19S-7E**
 Township: **Diamond Creek**
 Acres: **34**
 Date: **8/17/2016**

Maps Provided By:



© AgriData, Inc. 2016

www.AgriDataInc.com



Area Symbol: KS017, Soil Area Version: 11

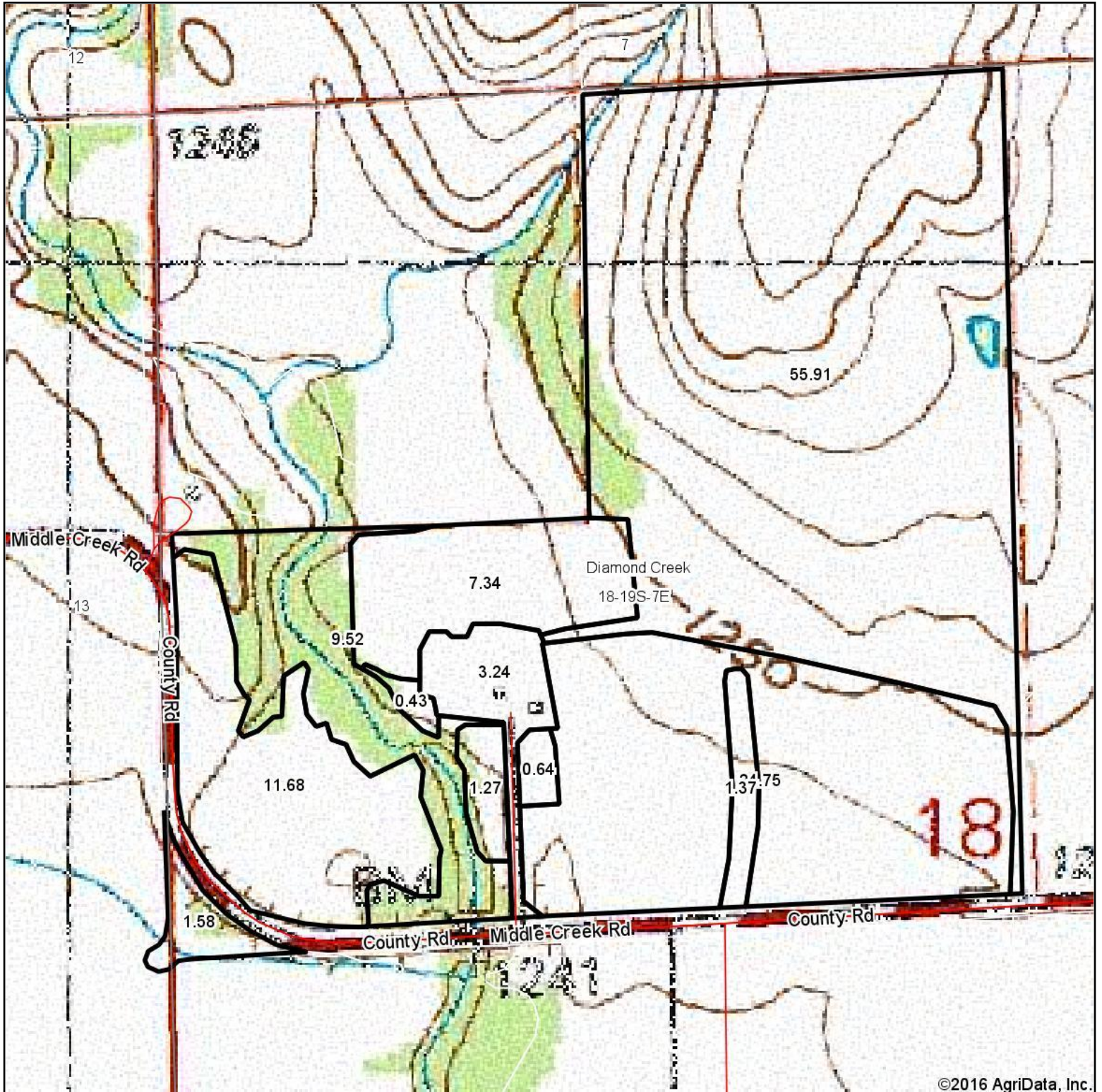
Code	Soil Description	Acres	Percent of field	Non-Irr Class Legend	Non-Irr Class *c	Irr Class *c
7174	Reading silt loam, 1 to 3 percent slopes	12.87	37.9%		Ile	Ile
4671	Irwin silty clay loam, 1 to 3 percent slopes	10.83	31.9%		IIIs	IIIs
7170	Reading silt loam, rarely flooded	7.29	21.4%		Iw	Iw
3891	Ladysmith silty clay loam, 1 to 3 percent slopes	3.01	8.9%		IIIs	IIIs

Area Symbol: KS017, Soil Area Version: 11

*c: Using Capabilities Class Dominant Condition Aggregation Method

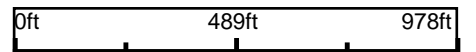
Soils data provided by USDA and NRCS.

Topography Map



©2016 AgriData, Inc.

map center: 38° 24' 7.84, -96° 42' 16.78



18-19S-7E
Chase County
Kansas



8/17/2016

Maps Provided By:
 **surety**
CUSTOMIZED ONLINE MAPPING
© AgriData, Inc. 2016 www.AgriDataInc.com