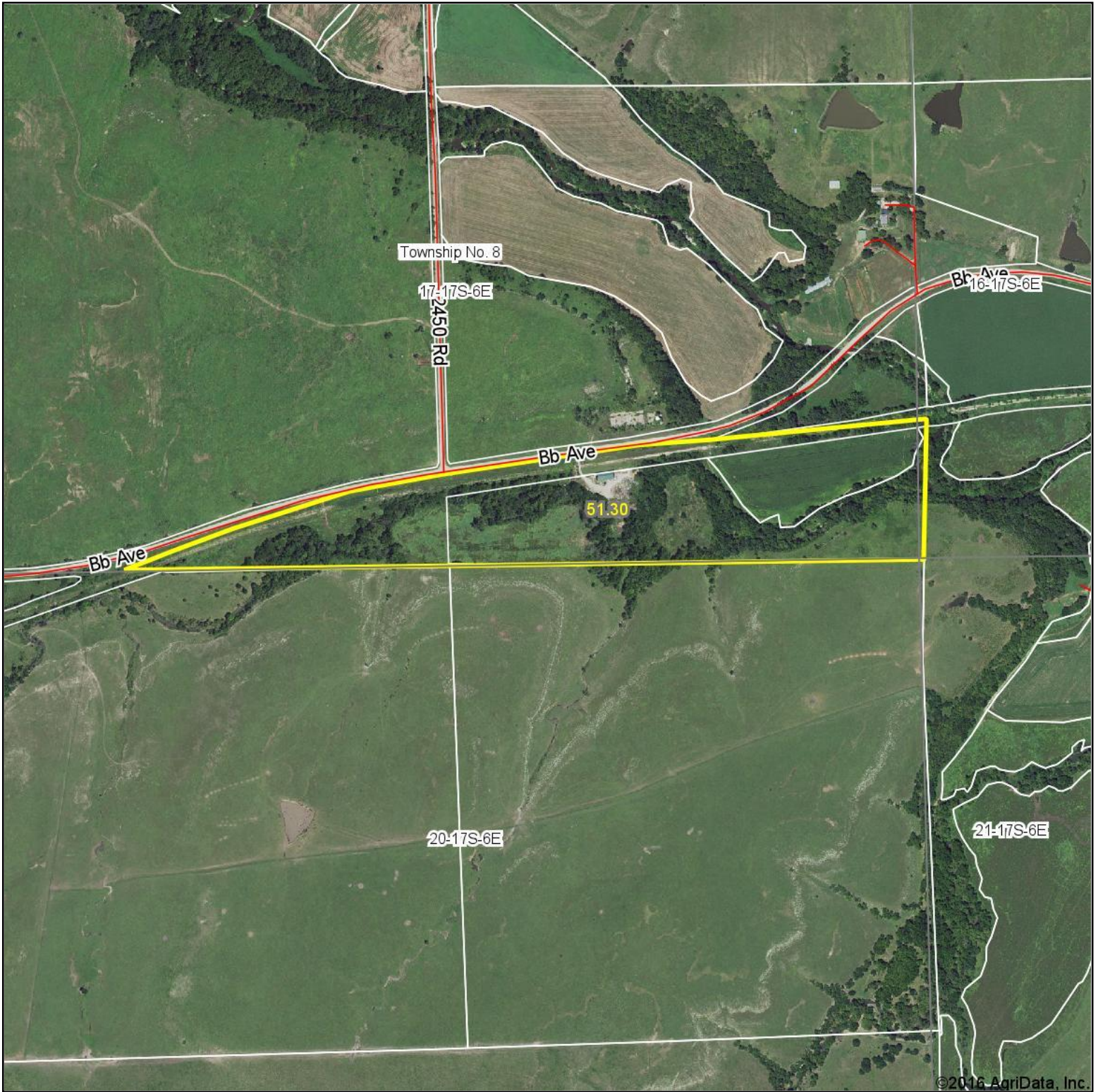
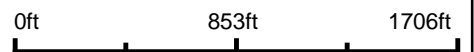


Aerial Map



©2016 AgriData, Inc.

map center: 38° 33' 58.8, -96° 47' 22.29



Maps Provided By:

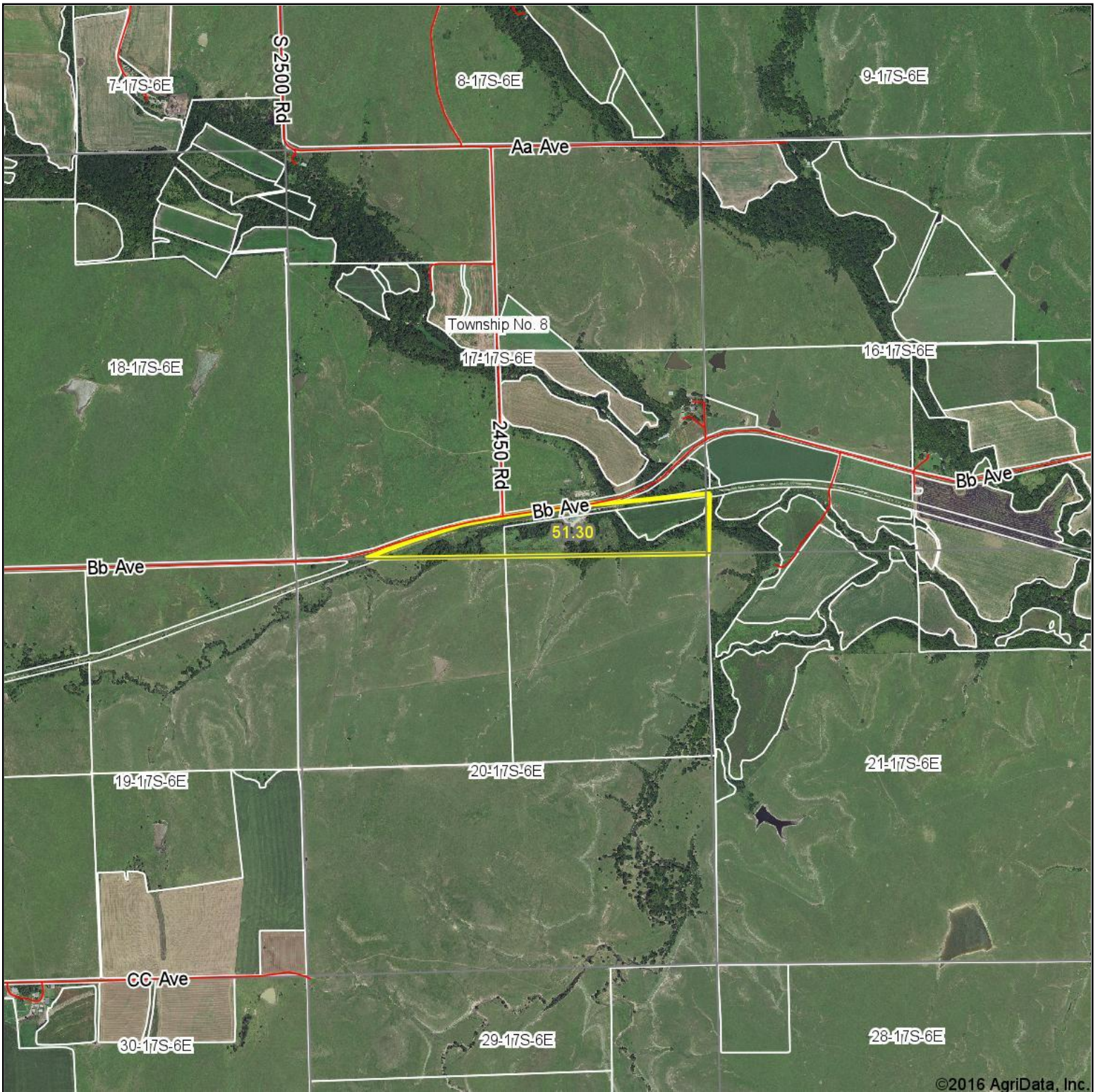
CUSTOMIZED ONLINE MAPPING
© AgriData, Inc. 2016 www.AgriDataInc.com

17-17S-6E
Morris County
Kansas



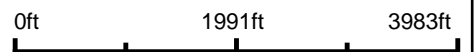
11/9/2016

Aerial Map



©2016 AgriData, Inc.

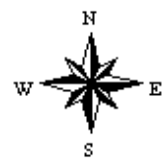
map center: 38° 33' 58.79, -96° 47' 22.27



Maps Provided By:

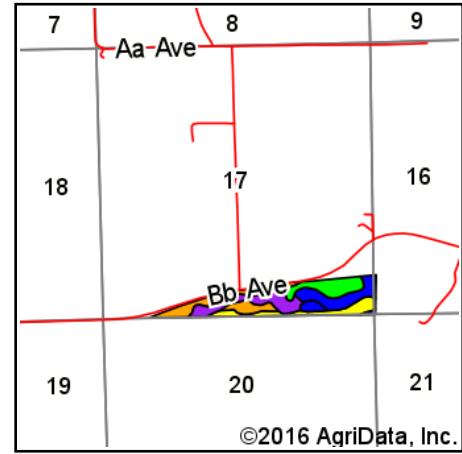
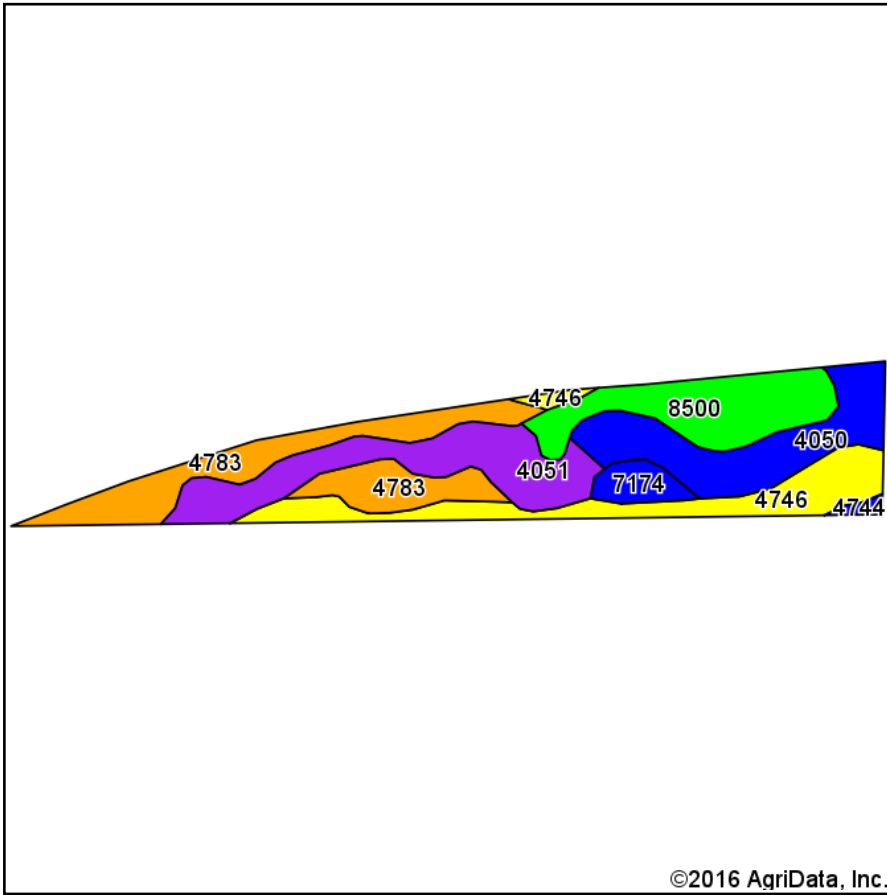
CUSTOMIZED ONLINE MAPPING
© AgriData, Inc. 2016 www.AgriDataInc.com

17-17S-6E
Morris County
Kansas



11/9/2016

Soils Map



State: **Kansas**
 County: **Morris**
 Location: **17-17S-6E**
 Township: **Township No. 8**
 Acres: **51.3**
 Date: **11/9/2016**



Area Symbol: KS127, Soil Area Version: 12

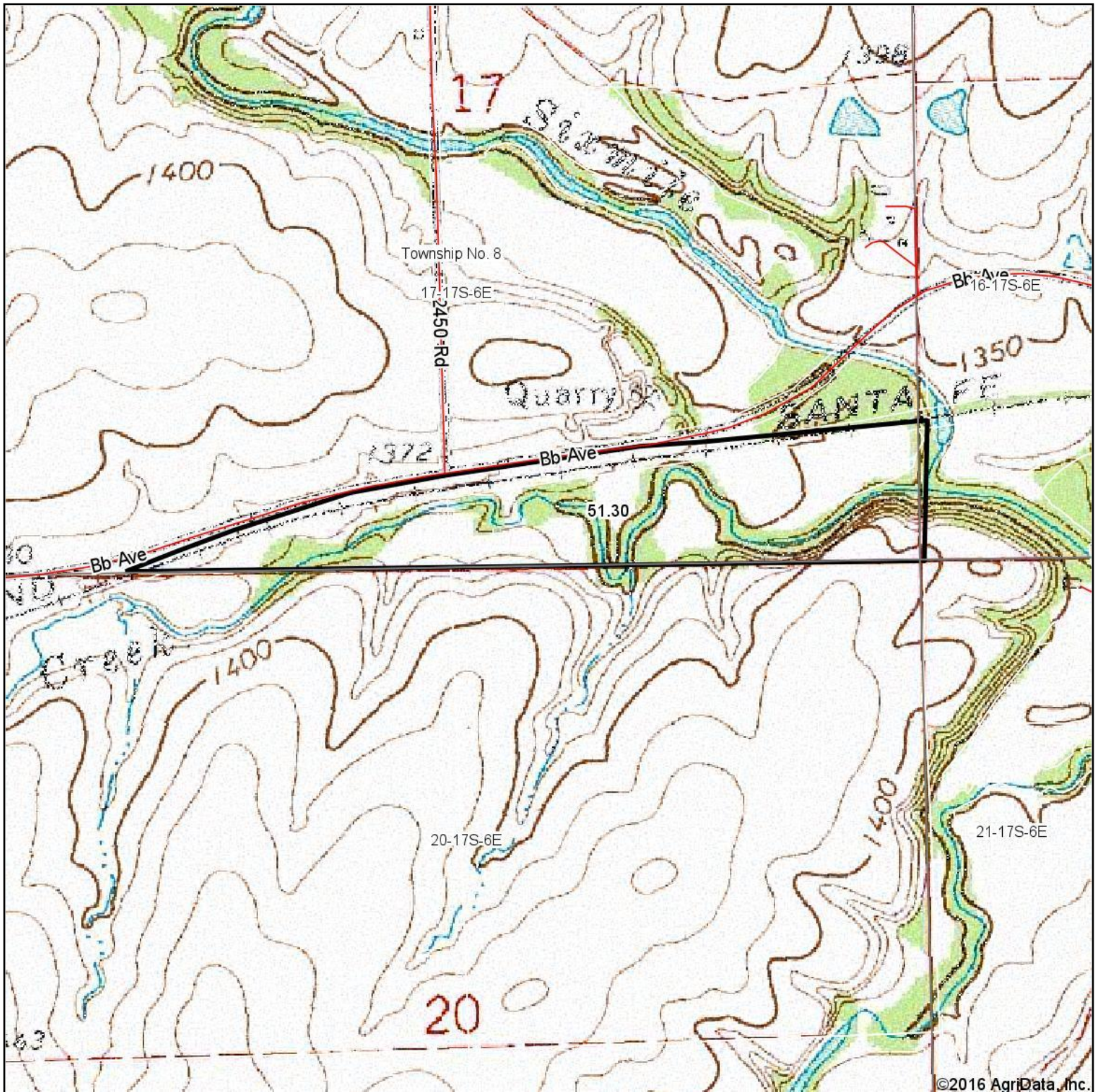
Code	Soil Description	Acres	Percent of field	Non-Irr Class Legend	Non-Irr Class *c	Irr Class *c
4783	Tully silty clay loam, 3 to 7 percent slopes	11.69	22.8%		IIIe	IIIe
4051	Ivan silt loam, channeled	10.31	20.1%		Vw	
4050	Ivan and Kennebec silt loams, occasionally flooded	9.41	18.3%		IIw	IIw
4746	Labette-Sogn silty clay loam, 0 to 8 percent slopes	8.96	17.5%		IVe	IIIe
8500	Mason and Reading silt loams, rarely flooded	8.65	16.9%		Iw	Iw
7174	Reading silt loam, 1 to 3 percent slopes	1.92	3.7%		IIe	IIe
4744	Labette-Dwight complex, 0 to 3 percent slopes	0.36	0.7%		Ile	Ile

Area Symbol: KS127, Soil Area Version: 12

*c: Using Capabilities Class Dominant Condition Aggregation Method

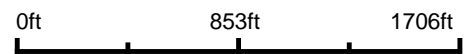
Soils data provided by USDA and NRCS.

Topography Map

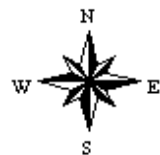


©2016 AgriData, Inc.

map center: 38° 33' 58.8, -96° 47' 22.29



17-17S-6E
Morris County
Kansas



11/9/2016

Maps Provided By:

CUSTOMIZED ONLINE MAPPING
© AgriData, Inc. 2016 www.AgriDataInc.com