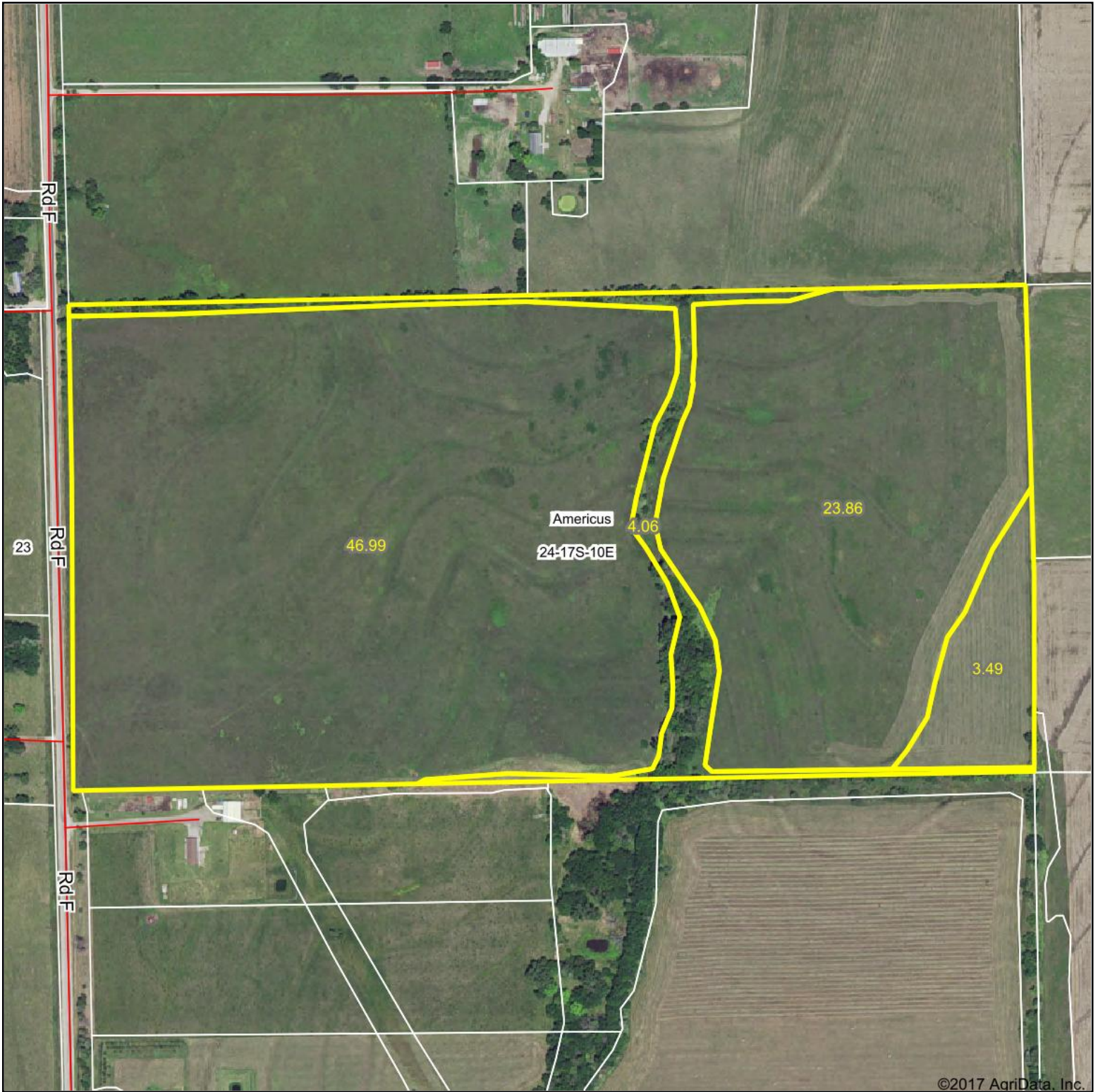


Aerial Map



©2017 AgriData, Inc.

map center: 38° 33' 19.52, -96° 15' 23.65



Maps Provided By:

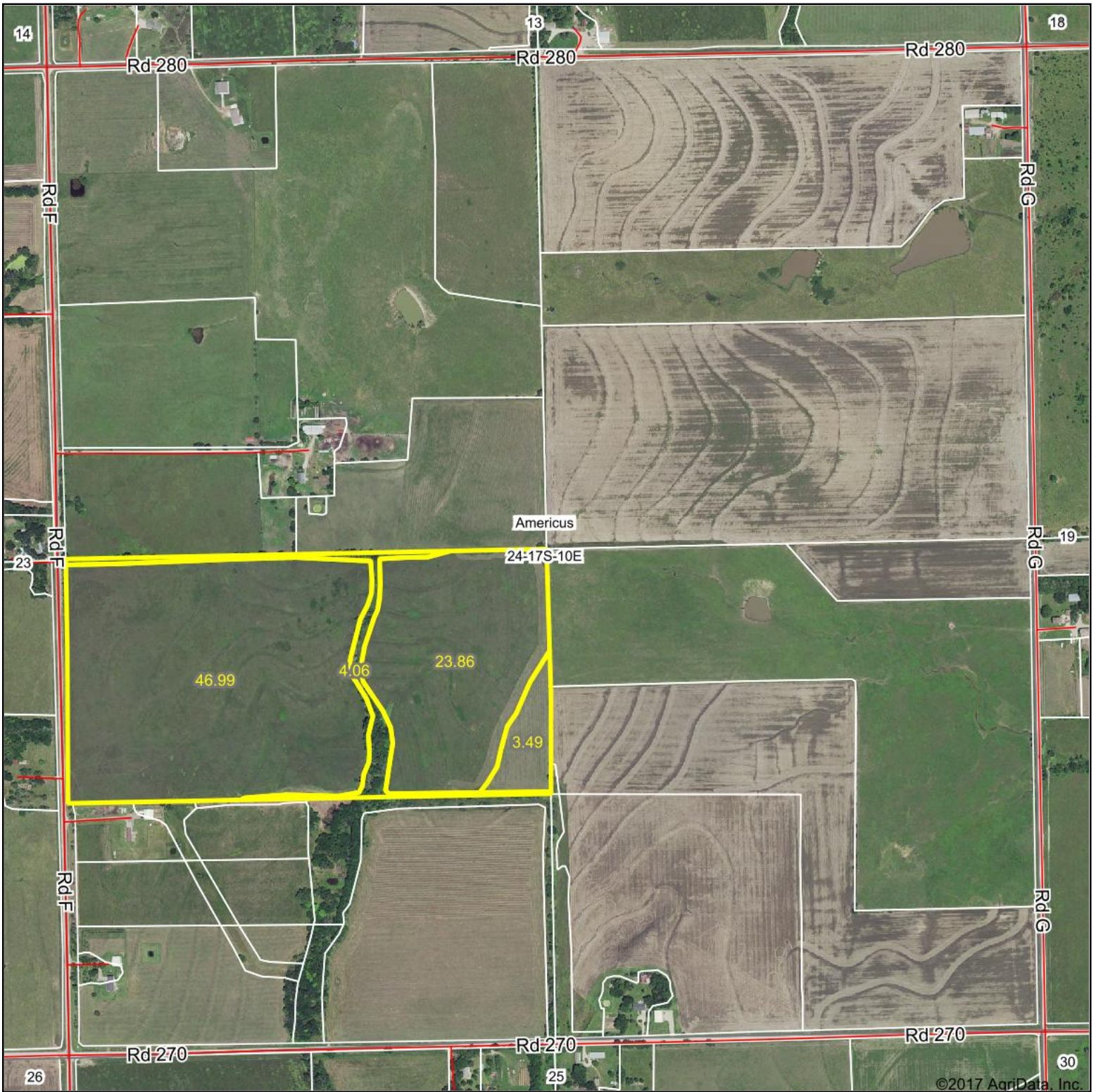
CUSTOMIZED ONLINE MAPPING
© AgriData, Inc. 2017 www.AgriDataInc.com

24-17S-10E
Lyon County
Kansas



9/20/2017

Aerial Map

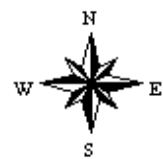


map center: 38° 33' 26.22, -96° 15' 7.14



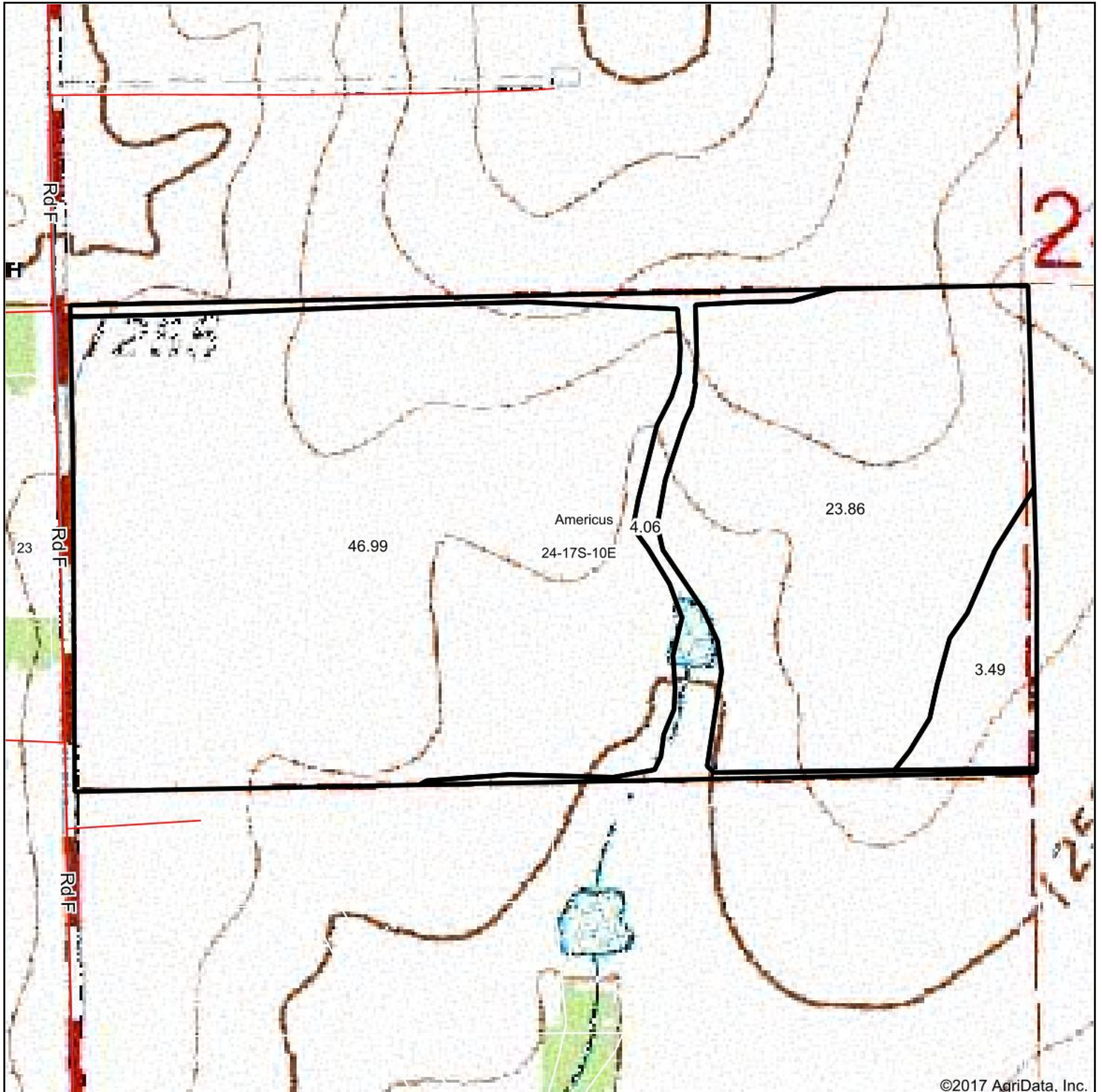
Maps Provided By:
surety
CUSTOMIZED ONLINE MAPPING
© AgriData, Inc. 2017 www.AgriDataInc.com

24-17S-10E
Lyon County
Kansas



9/20/2017

Topography Map

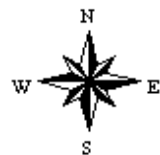


©2017 AgriData, Inc.

map center: 38° 33' 19.52, -96° 15' 23.65



24-17S-10E
Lyon County
Kansas



9/20/2017

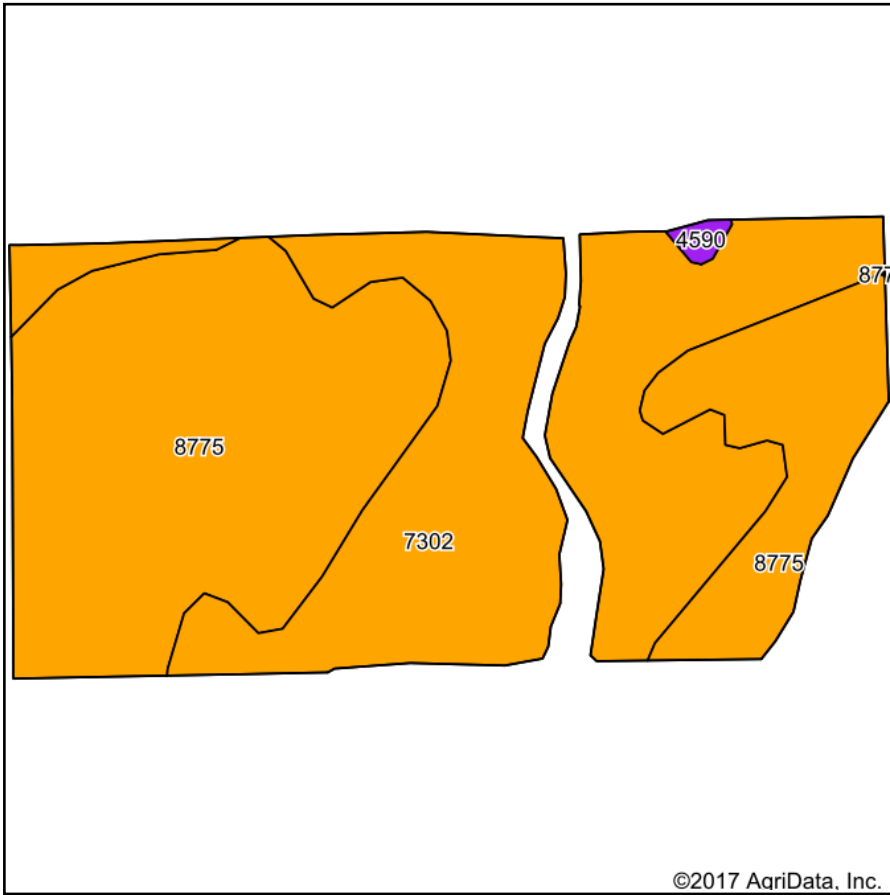
Maps Provided By:



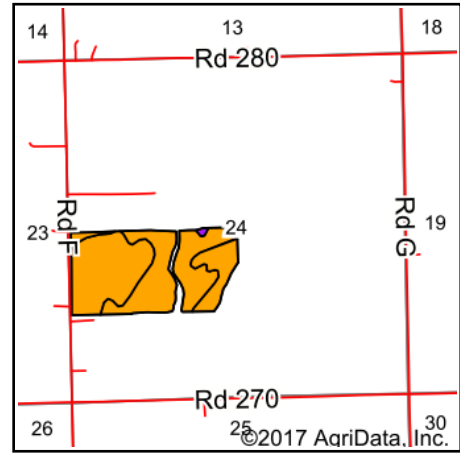
© AgriData, Inc. 2017

www.AgriDataInc.com

Soils Map



Soils data provided by USDA and NRCS.



State: **Kansas**
 County: **Lyon**
 Location: **24-17S-10E**
 Township: **Americus**
 Acres: **70.85**
 Date: **9/20/2017**

Maps Provided By:



© AgriData, Inc. 2017

www.AgriDataInc.com



Area Symbol: KS111, Soil Area Version: 15

Code	Soil Description	Acres	Percent of field	Non-Irr Class Legend	Non-Irr Class *c	Irr Class *c
8775	Kenoma silt loam, 1 to 3 percent slopes	37.50	52.9%		IIIe	
7302	Martin silty clay loam, 3 to 7 percent slopes	33.00	46.6%		IIIe	IIIe
4590	Clime-Sogn complex, 3 to 20 percent slopes	0.35	0.5%		VIe	

*c: Using Capabilities Class Dominant Condition Aggregation Method

Soils data provided by USDA and NRCS.