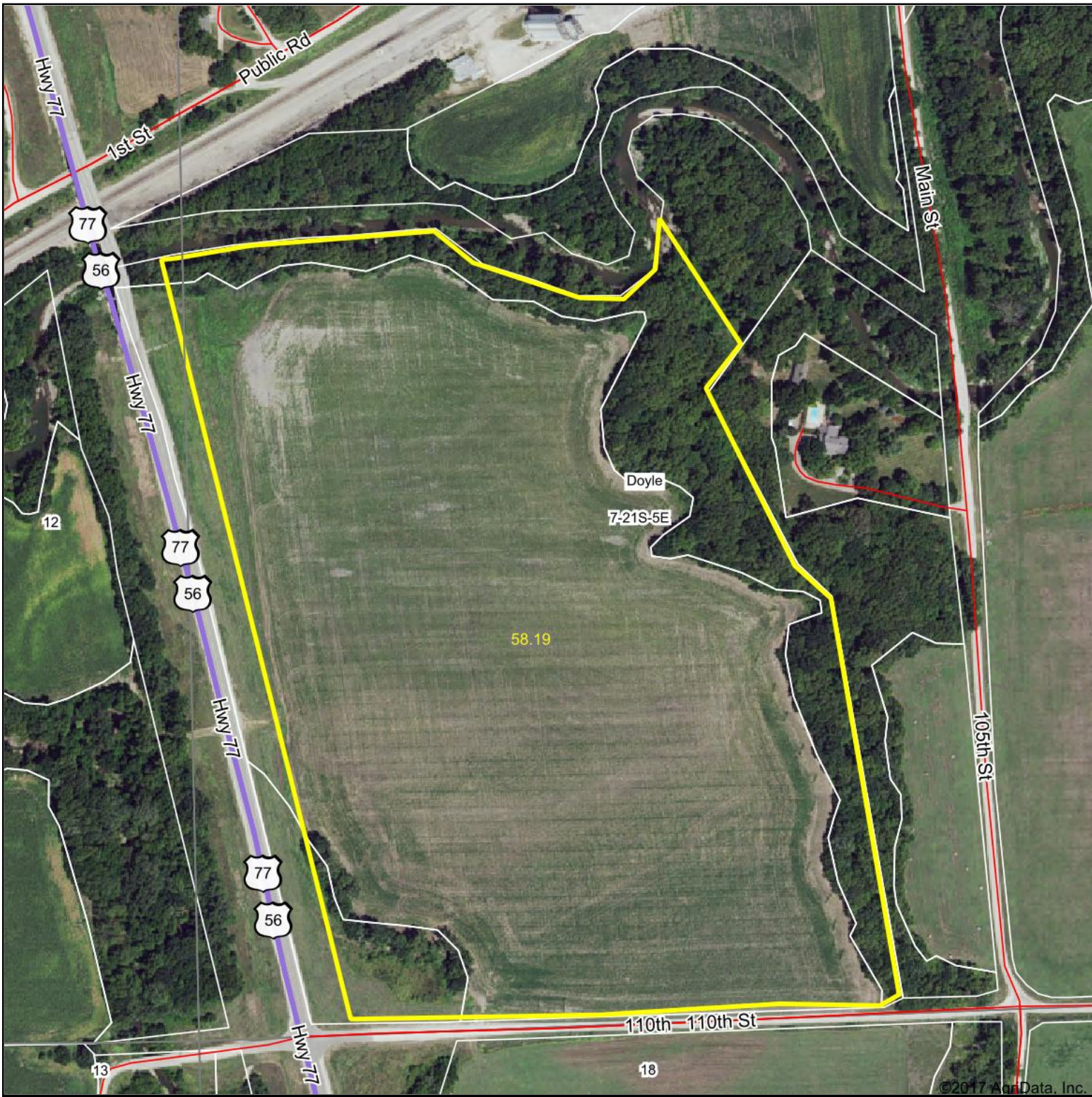


# Aerial Map

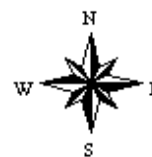


map center: 38° 14' 2.56, -96° 55' 44.41



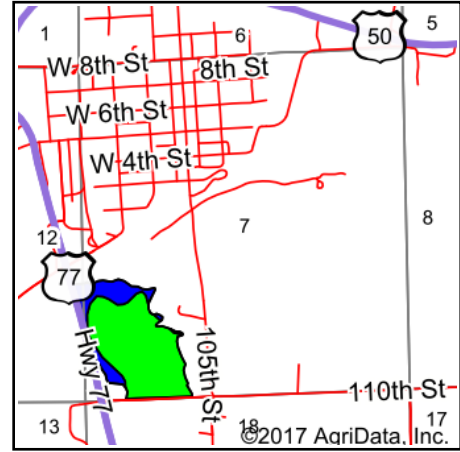
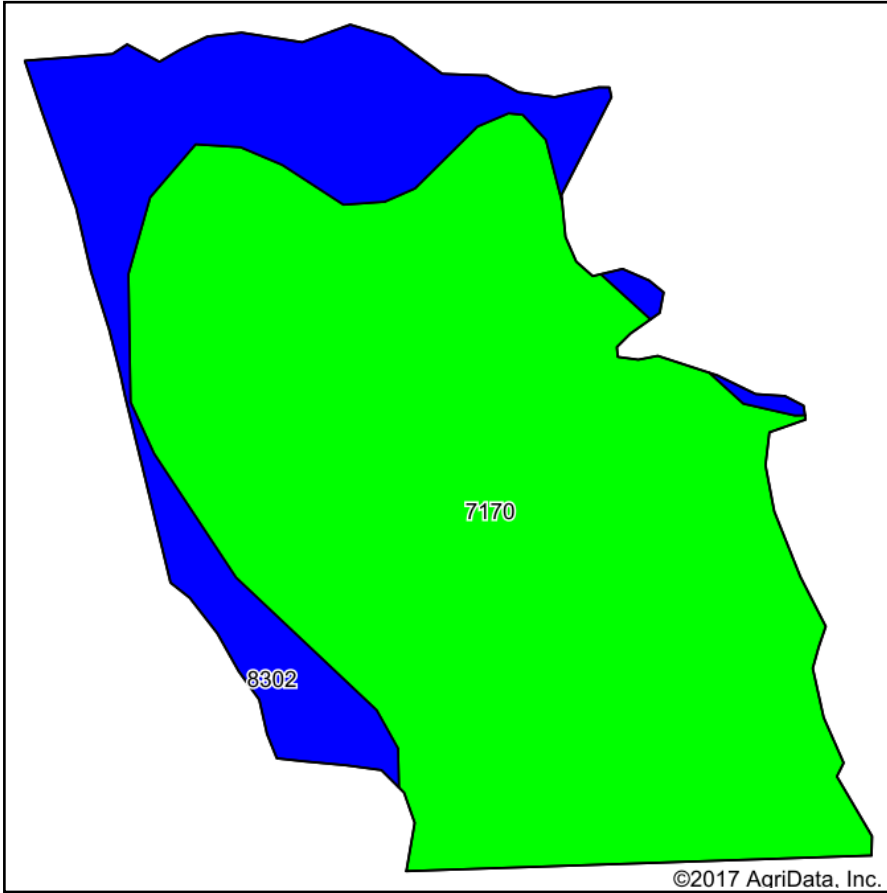
Maps Provided By:  
  
CUSTOMIZED ONLINE MAPPING  
© AgriData, Inc. 2017 www.AgriDataInc.com

**7-21S-5E**  
**Marion County**  
**Kansas**



9/25/2017

# Soils Map



State: **Kansas**  
 County: **Marion**  
 Location: **7-21S-5E**  
 Township: **Doyle**  
 Acres: **51.32**  
 Date: **9/25/2017**

Maps Provided By:



© AgriData, Inc. 2017

www.AgriDataInc.com



**Area Symbol: KS115, Soil Area Version: 13**

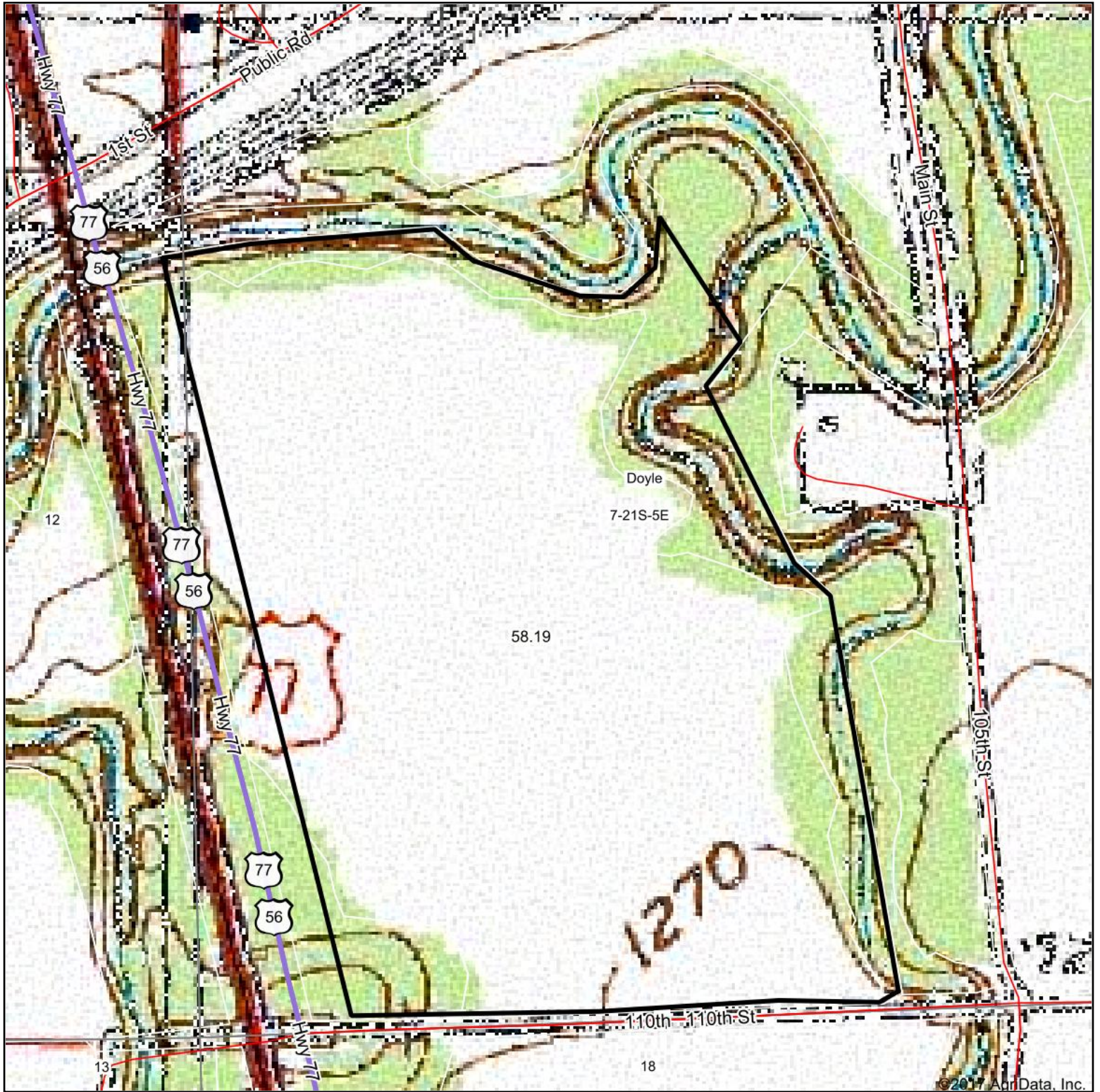
Code	Soil Description	Acres	Percent of field	Non-Irr Class Legend	Non-Irr Class *c	Irr Class *c
7170	Reading silt loam, rarely flooded	40.44	78.8%		lw	lw
8302	Verdigris silt loam, 0 to 1 percent slopes, occasionally flooded	10.88	21.2%		llw	

\*c: Using Capabilities Class Dominant Condition Aggregation Method

Soils data provided by USDA and NRCS.



# Topography Map



©2017 AgriData, Inc.

map center: 38° 14' 2.56, -96° 55' 44.41

0ft 381ft 761ft

**7-21S-5E**  
**Marion County**  
**Kansas**



9/25/2017

Maps Provided By:  
  
CUSTOMIZED ONLINE MAPPING  
© AgriData, Inc. 2017 www.AgriDataInc.com