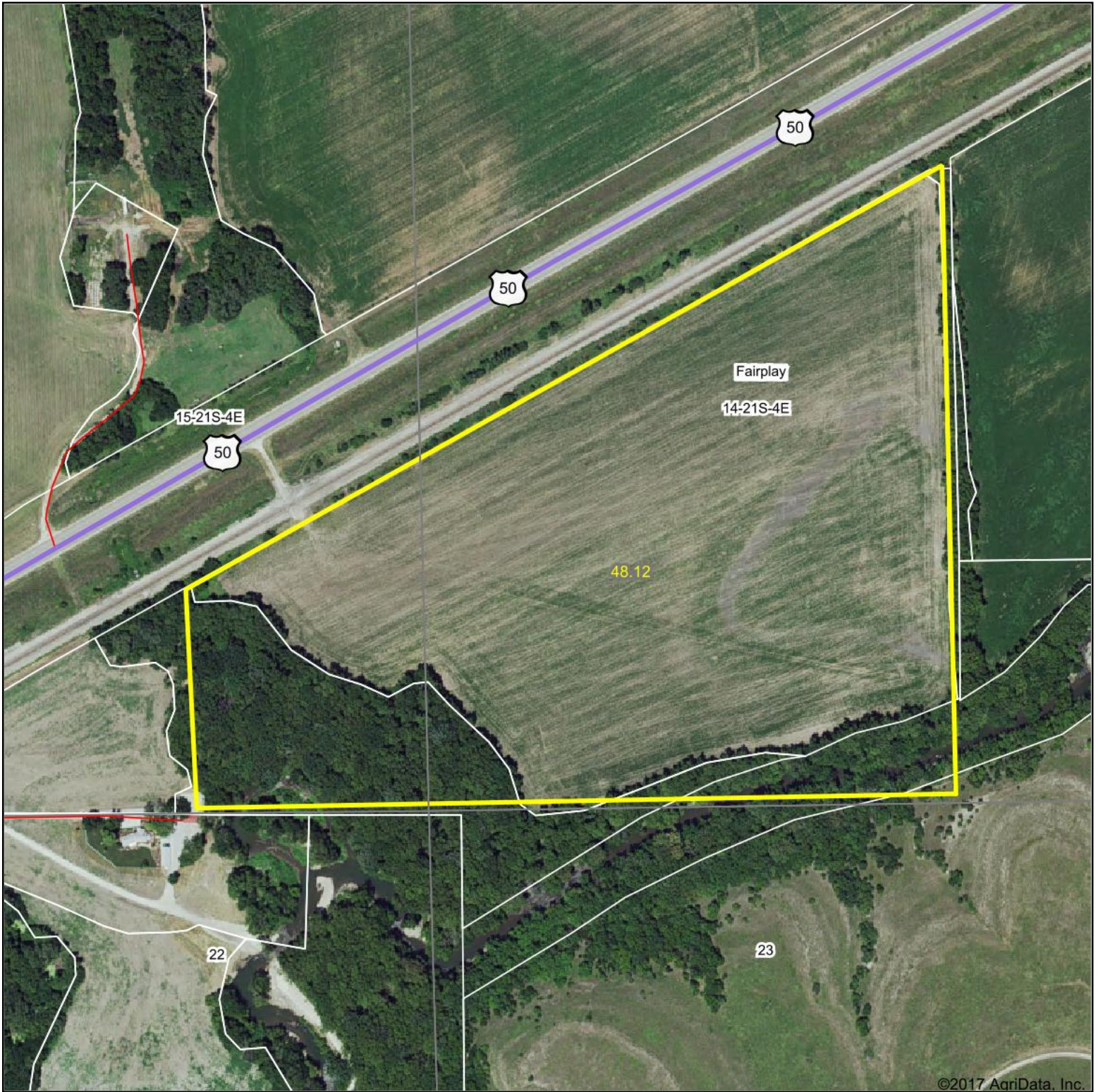
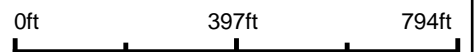


Aerial Map



©2017 AgriData, Inc.

map center: 38° 13' 6.06, -96° 58' 4.9



Maps Provided By:

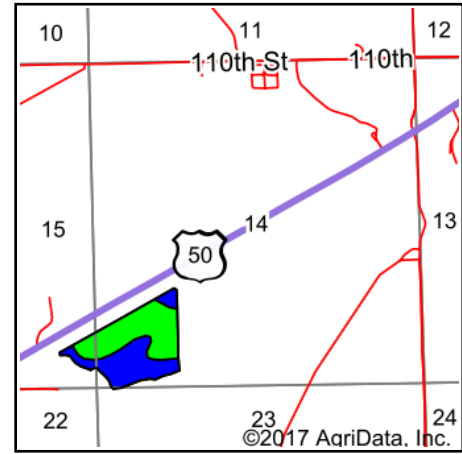
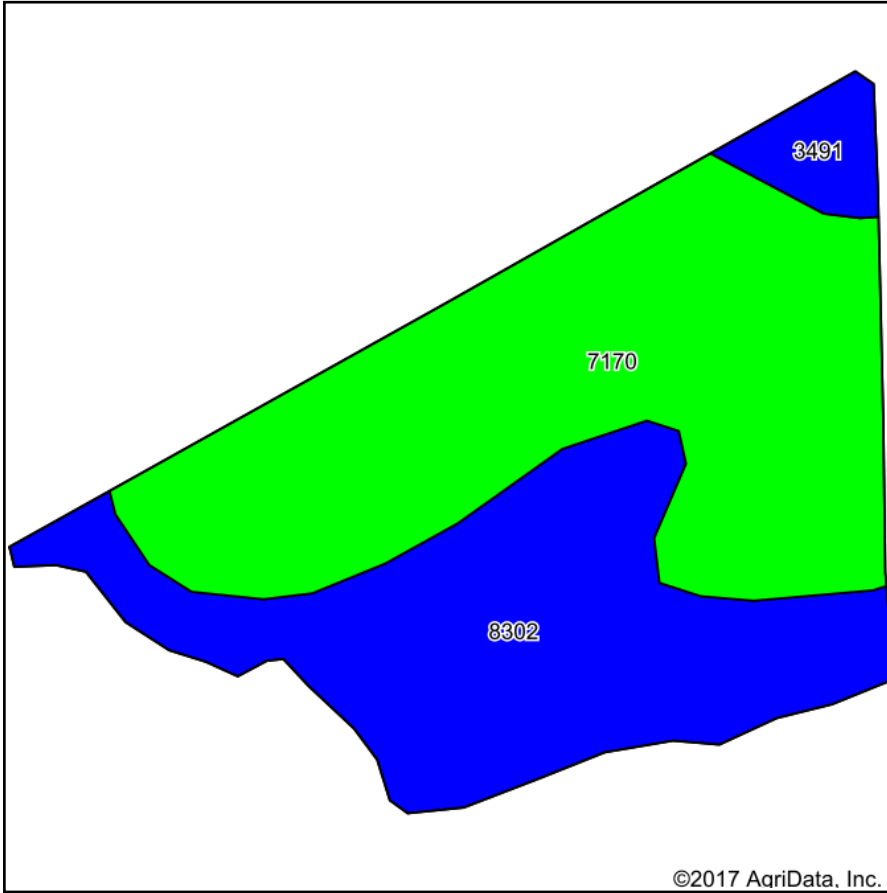
CUSTOMIZED ONLINE MAPPING
© AgriData, Inc. 2017 www.AgriDataInc.com

14-21S-4E
Marion County
Kansas



9/25/2017

Soils Map



State: **Kansas**
 County: **Marion**
 Location: **14-21S-4E**
 Township: **Fairplay**
 Acres: **39.48**
 Date: **9/25/2017**

Maps Provided By:



© AgriData, Inc. 2017

www.AgriDataInc.com



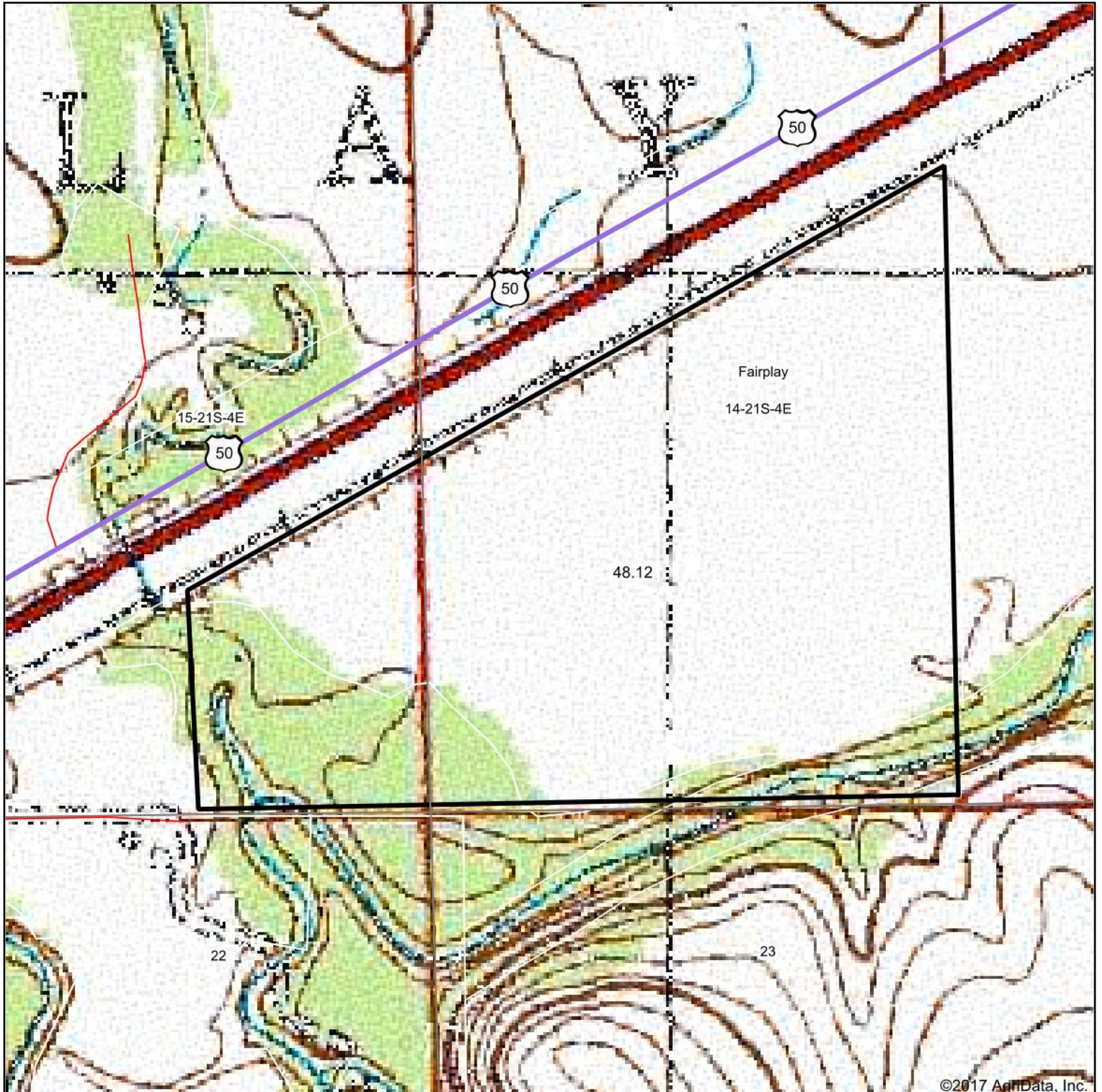
Area Symbol: KS115, Soil Area Version: 13

Code	Soil Description	Acres	Percent of field	Non-Irr Class Legend	Non-Irr Class *c	Irr Class *c
7170	Reading silt loam, rarely flooded	21.85	55.3%		Iw	Iw
8302	Verdigris silt loam, 0 to 1 percent slopes, occasionally flooded	16.04	40.6%		IIw	
3491	Wells loam, 1 to 3 percent slopes	1.59	4.0%		Ile	Ile

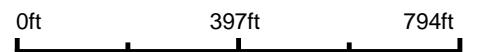
*c: Using Capabilities Class Dominant Condition Aggregation Method

Soils data provided by USDA and NRCS.

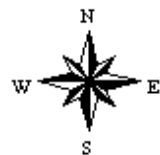
Topography Map



map center: 38° 13' 6.06, -96° 58' 4.9



14-21S-4E
Marion County
Kansas



9/25/2017

Maps Provided By:

CUSTOMIZED ONLINE MAPPING
© AgriData, Inc. 2017 www.AgriDataInc.com