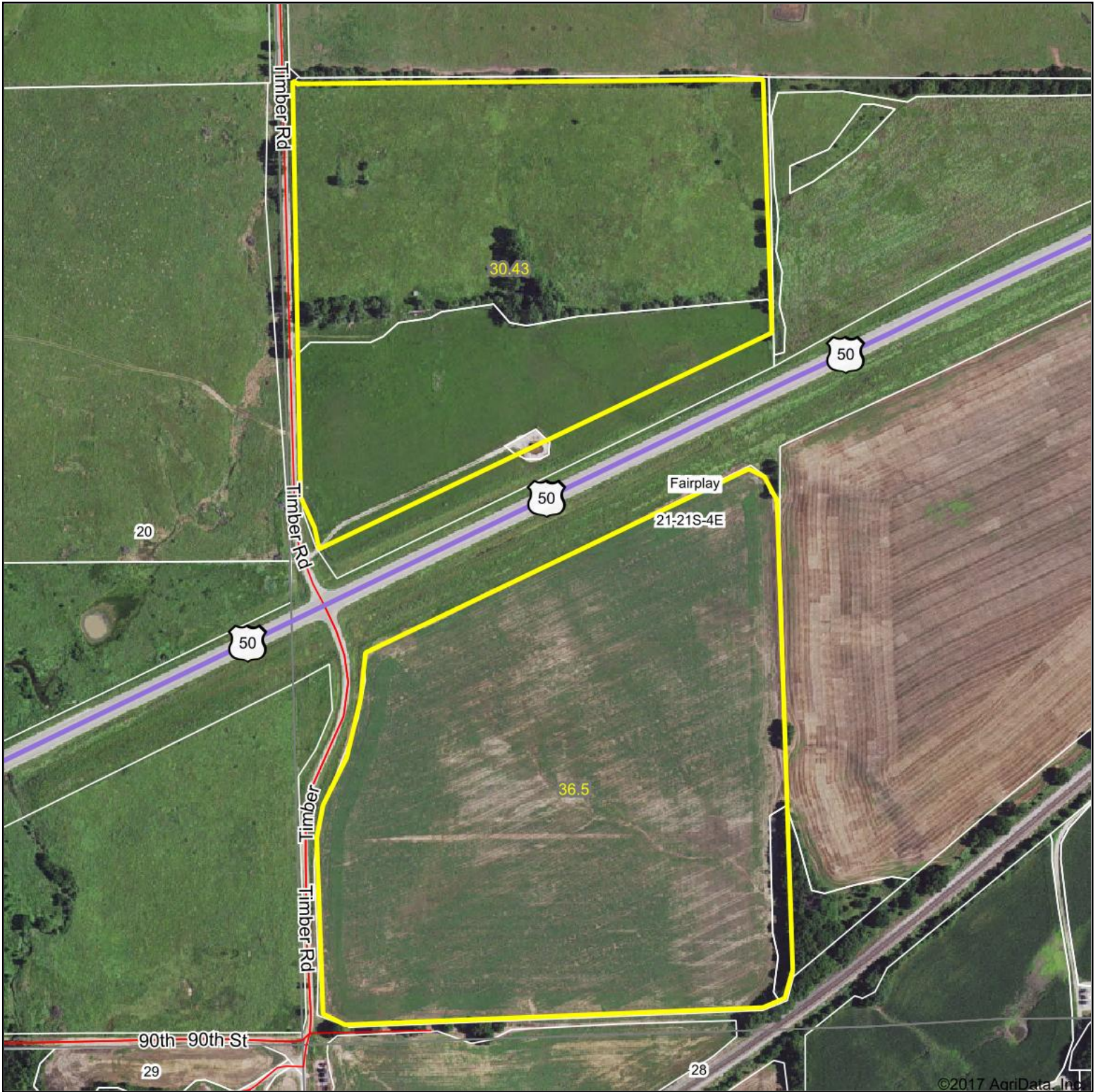


Aerial Map



map center: 38° 12' 21.74, -97° 0' 12.05



Maps Provided By:

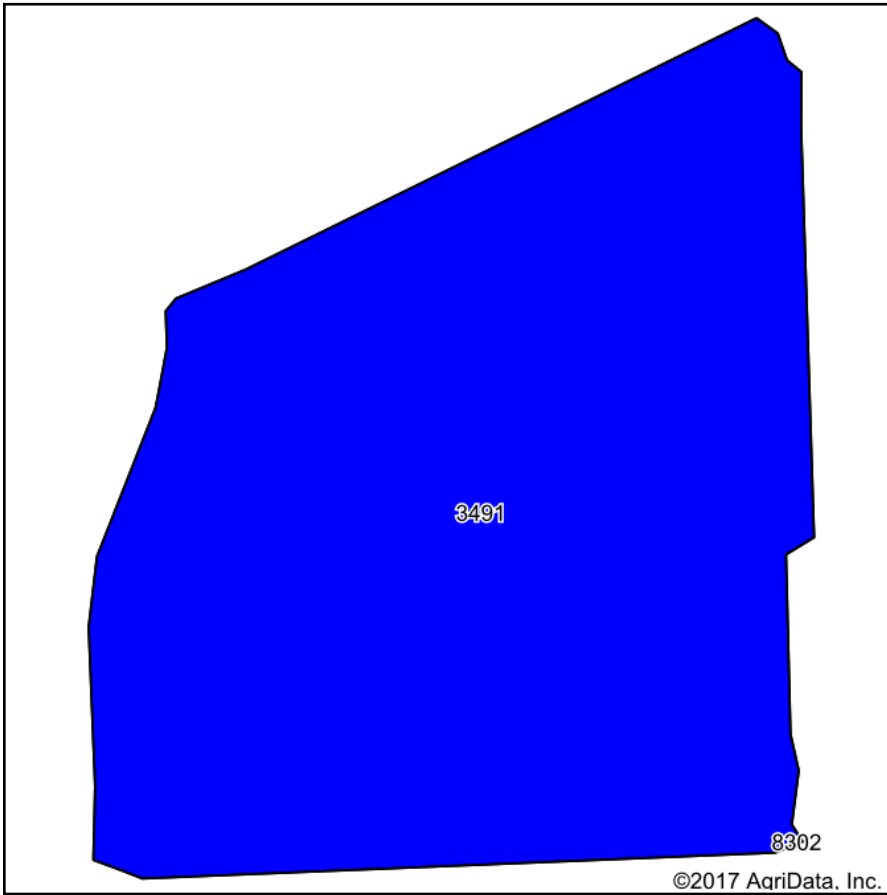
CUSTOMIZED ONLINE MAPPING
© AgriData, Inc. 2017 www.AgriDataInc.com

21-21S-4E
Marion County
Kansas

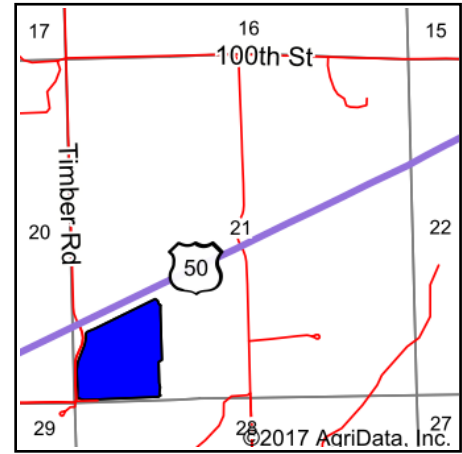


9/25/2017

Soils Map



Soils data provided by USDA and NRCS.



State: **Kansas**
 County: **Marion**
 Location: **21-21S-4E**
 Township: **Fairplay**
 Acres: **36.38**
 Date: **11/1/2017**

Maps Provided By:



© AgriData, Inc. 2017

www.AgriDataInc.com



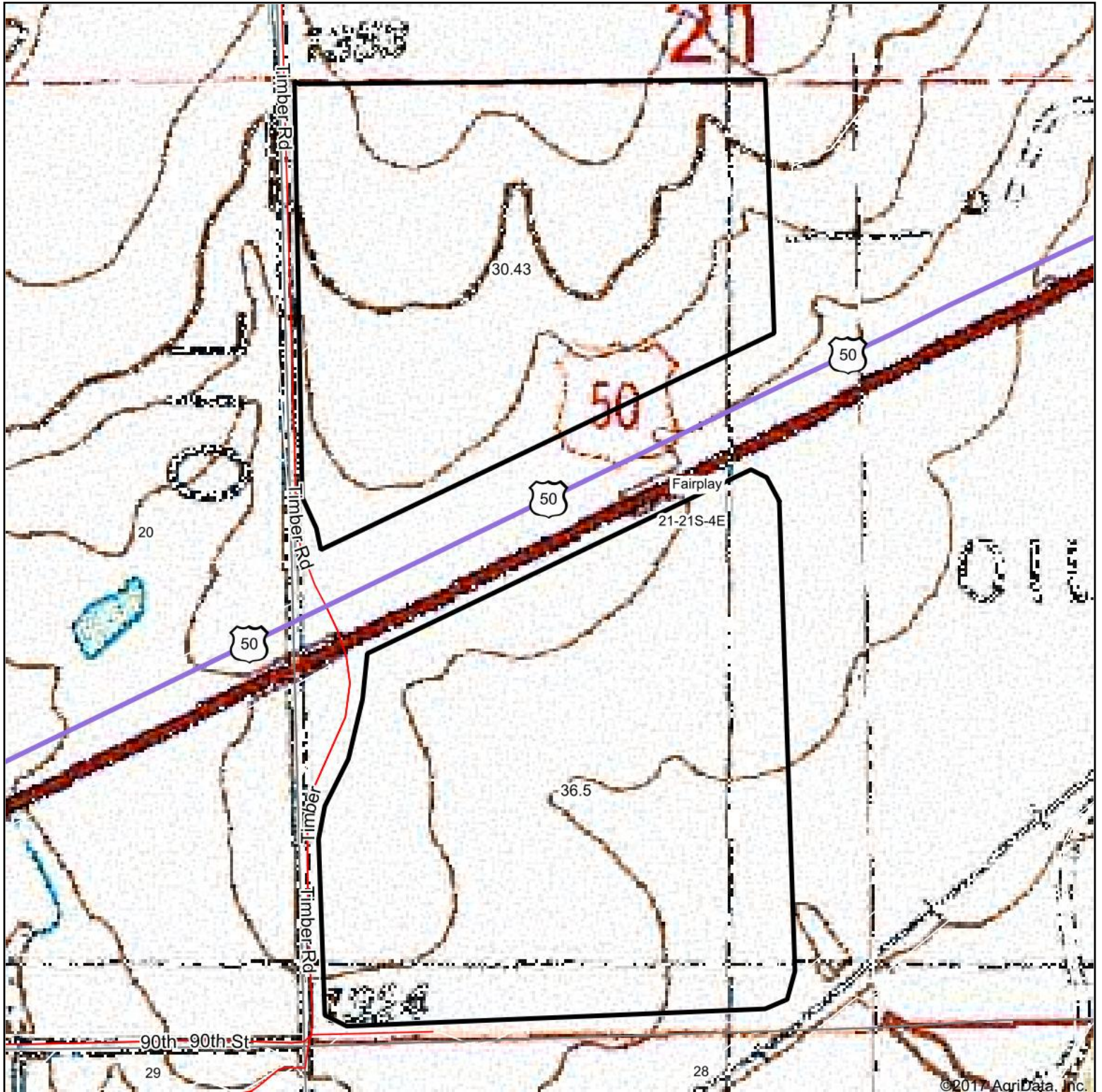
Area Symbol: KS115, Soil Area Version: 13

Code	Soil Description	Acres	Percent of field	Non-Irr Class Legend	Non-Irr Class *c	Irr Class *c
3491	Wells loam, 1 to 3 percent slopes	36.38	100.0%		Ile	Ile

*c: Using Capabilities Class Dominant Condition Aggregation Method

Soils data provided by USDA and NRCS.

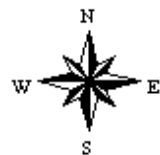
Topography Map



map center: 38° 12' 21.74, -97° 0' 12.05



21-21S-4E
Marion County
Kansas



9/25/2017

Maps Provided By:

CUSTOMIZED ONLINE MAPPING
© AgriData, Inc. 2017 www.AgriDataInc.com