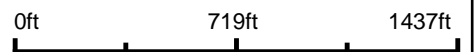


Aerial Map



©2017 AgriData, Inc.

map center: 38° 13' 22, -96° 57' 51.14



Maps Provided By:

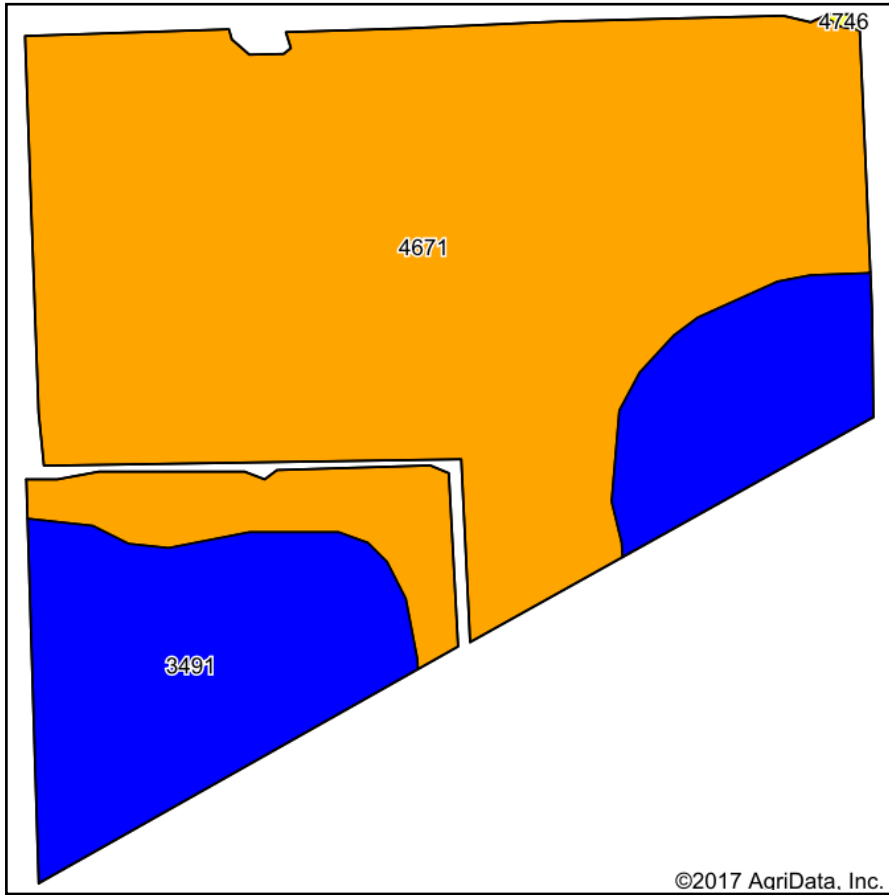
CUSTOMIZED ONLINE MAPPING
© AgriData, Inc. 2017 www.AgriDataInc.com

14-21S-4E
Marion County
Kansas



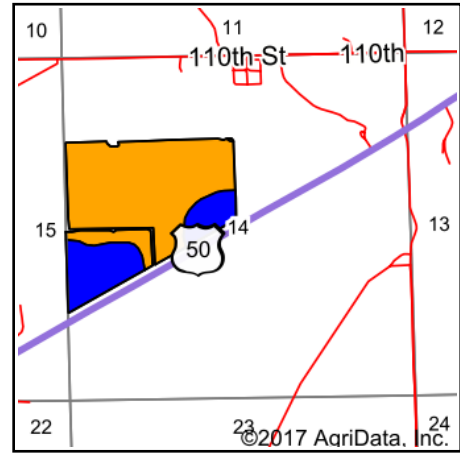
9/25/2017

Soils Map



Soils data provided by USDA and NRCS.

©2017 AgriData, Inc.



State: **Kansas**
 County: **Marion**
 Location: **14-21S-4E**
 Township: **Fairplay**
 Acres: **114.19**
 Date: **9/25/2017**

Maps Provided By:



© AgriData, Inc. 2017

www.AgrIDataInc.com



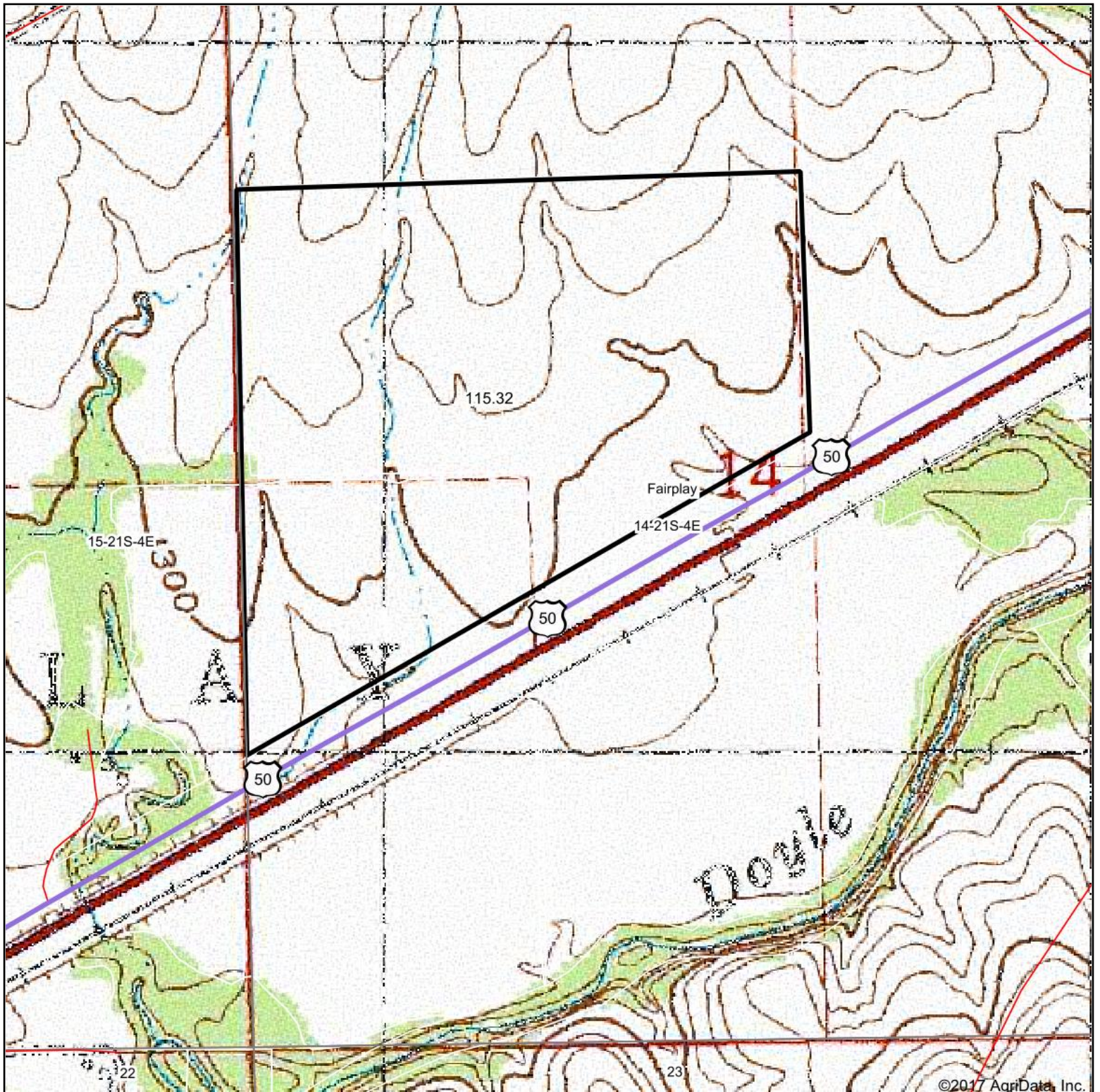
Area Symbol: KS115, Soil Area Version: 13

Code	Soil Description	Acres	Percent of field	Non-Irr Class Legend	Non-Irr Class *c	Irr Class *c
4671	Irwin silty clay loam, 1 to 3 percent slopes	83.79	73.4%		IIIs	IIIIs
3491	Wells loam, 1 to 3 percent slopes	30.33	26.6%		Ile	Ile
4746	Labette-Sogn silty clay loam, 0 to 8 percent slopes	0.07	0.1%		IVe	IIIe

*c: Using Capabilities Class Dominant Condition Aggregation Method

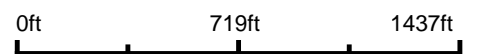
Soils data provided by USDA and NRCS.

Topography Map

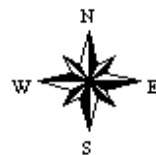


©2017 AgriData, Inc.

map center: 38° 13' 22", -96° 57' 51.14



14-21S-4E
Marion County
Kansas



9/25/2017

Maps Provided By:

CUSTOMIZED ONLINE MAPPING
© AgriData, Inc. 2017 www.AgriDataInc.com