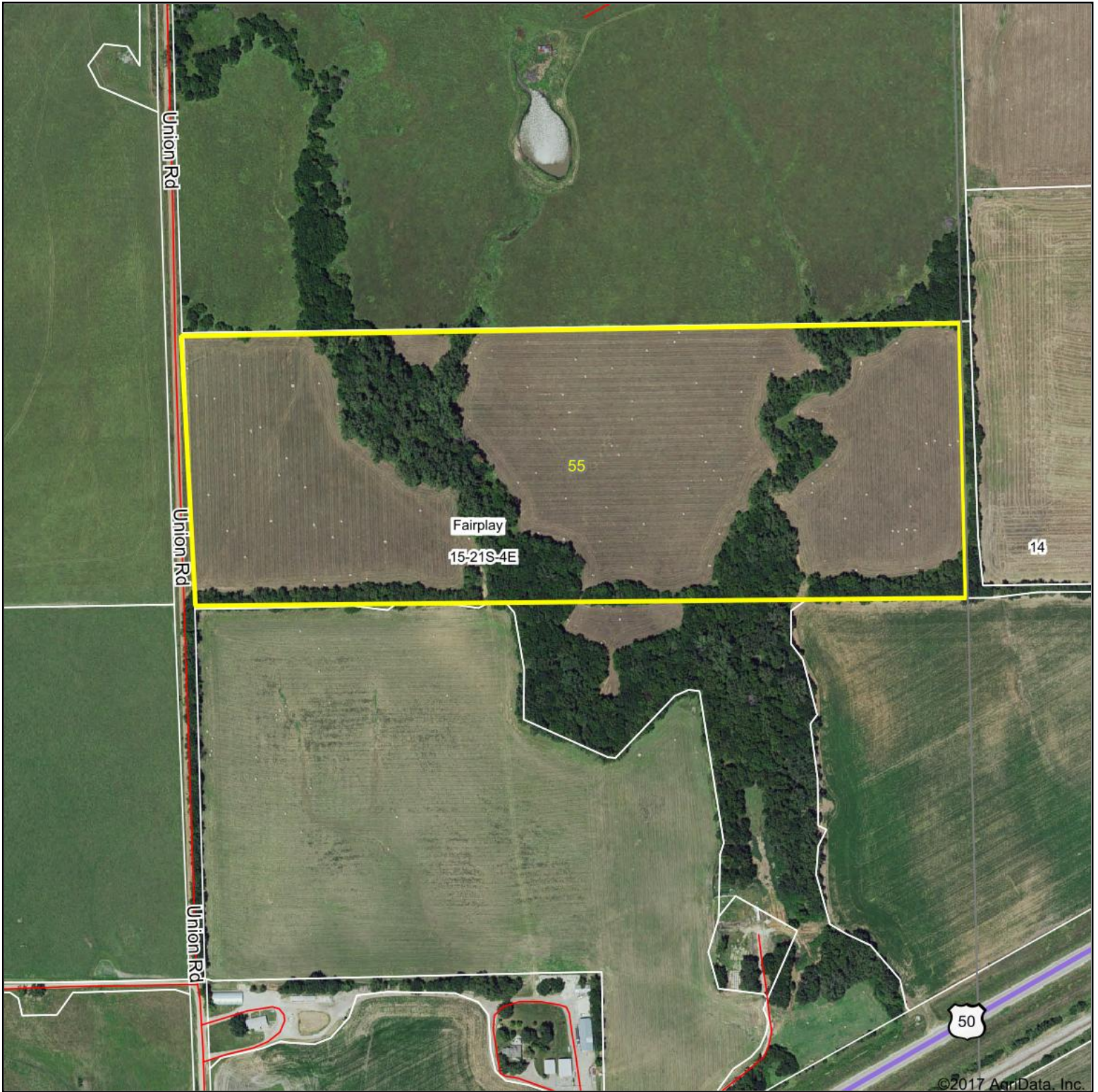


Aerial Map



©2017 AgriData, Inc.

map center: 38° 13' 27.23, -96° 58' 26.65



Maps Provided By:

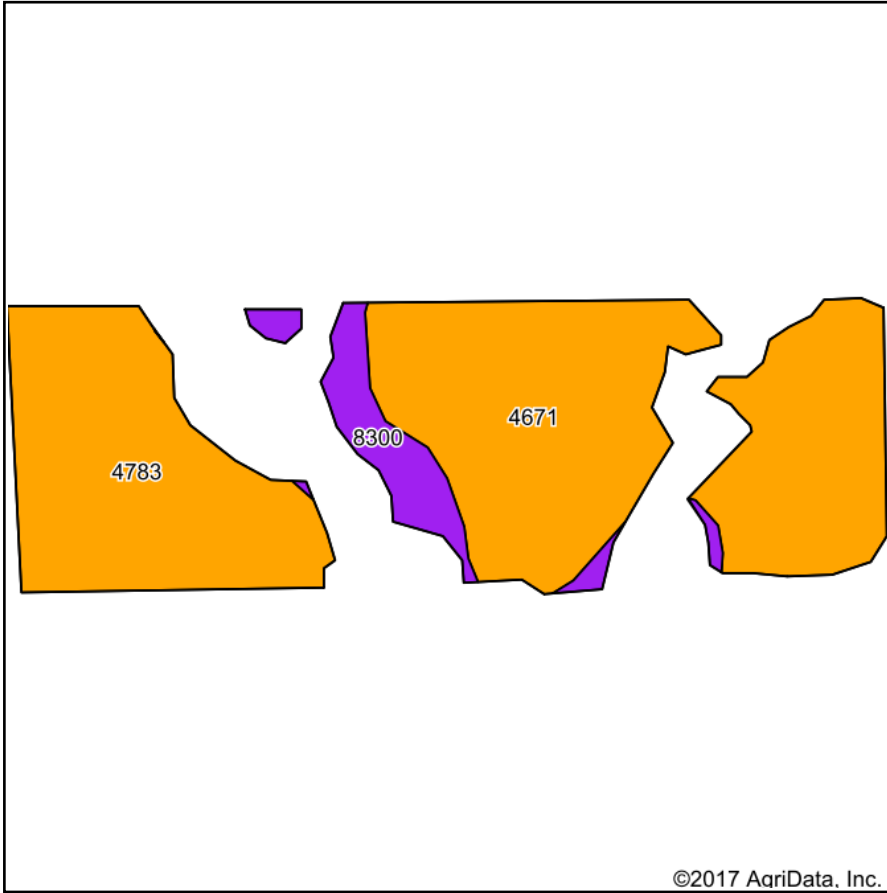
CUSTOMIZED ONLINE MAPPING
© AgriData, Inc. 2017 www.AgriDataInc.com

15-21S-4E
Marion County
Kansas

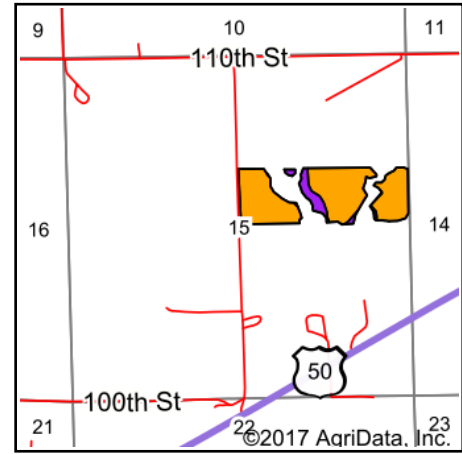


9/25/2017

Soils Map



Soils data provided by USDA and NRCS.



State: **Kansas**
 County: **Marion**
 Location: **15-21S-4E**
 Township: **Fairplay**
 Acres: **38.21**
 Date: **9/25/2017**

Maps Provided By:



© AgriData, Inc. 2017

www.AgriDataInc.com



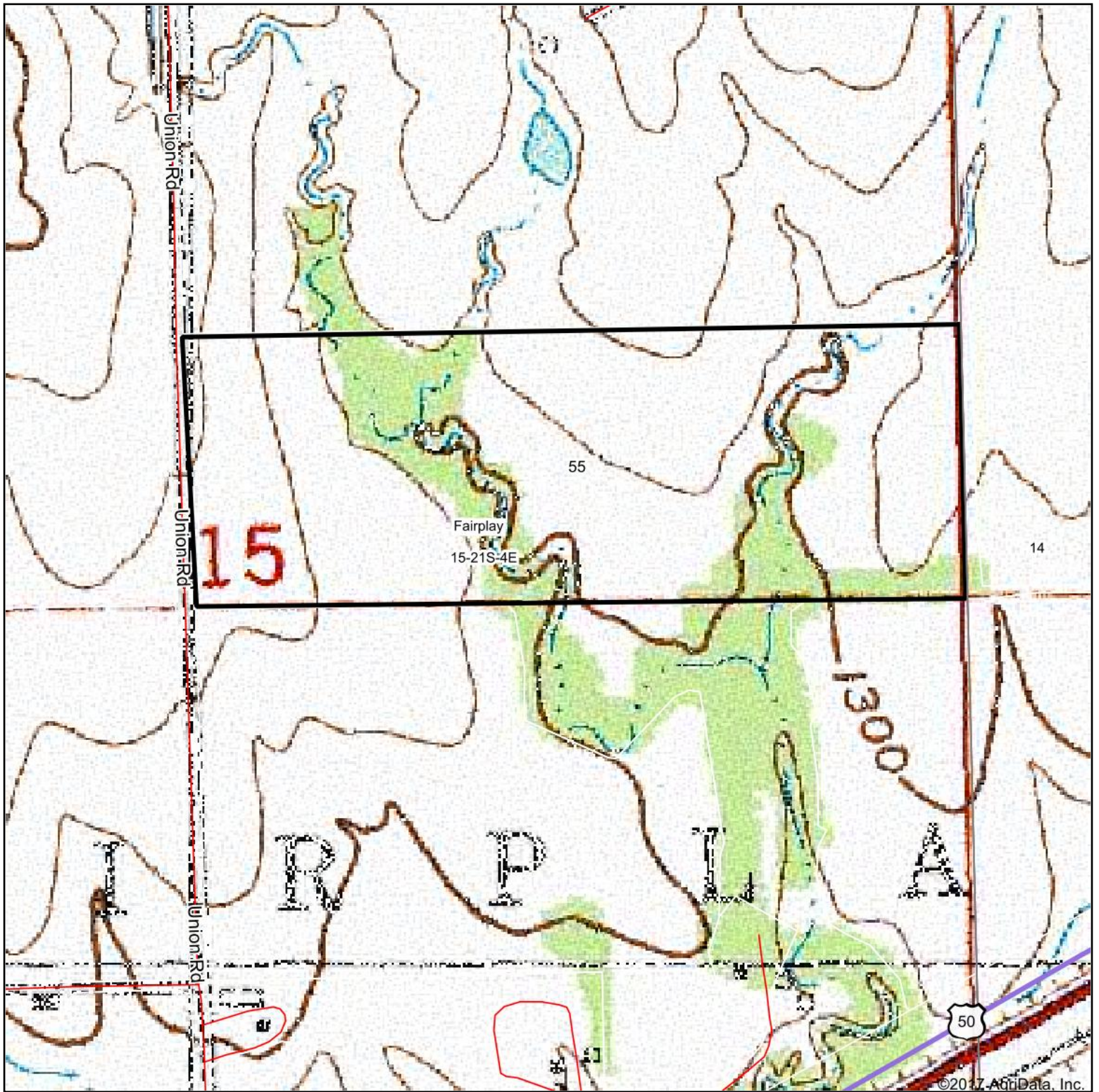
Area Symbol: KS115, Soil Area Version: 13

Cod e	Soil Description	Acres	Percent of field	Non-Irr Class Legend	Non-Irr Class *c	Irr Class *c
4671	Irwin silty clay loam, 1 to 3 percent slopes	21.87	57.2%		III s	III s
4783	Tully silty clay loam, 3 to 7 percent slopes	13.05	34.2%		III e	III e
8300	Verdigris silt loam, channeled, 0 to 2 percent slopes, frequently flooded	3.29	8.6%		Vw	

*c: Using Capabilities Class Dominant Condition Aggregation Method

Soils data provided by USDA and NRCS.

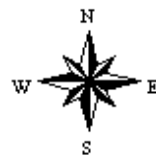
Topography Map



map center: 38° 13' 27.23, -96° 58' 26.65

0ft 522ft 1043ft

15-21S-4E
Marion County
Kansas



9/25/2017

Maps Provided By:



© AgriData, Inc. 2017

www.AgriDataInc.com