

Aerial Map



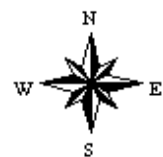
map center: 38° 13' 16.56, -96° 58' 25.93



Maps Provided By:

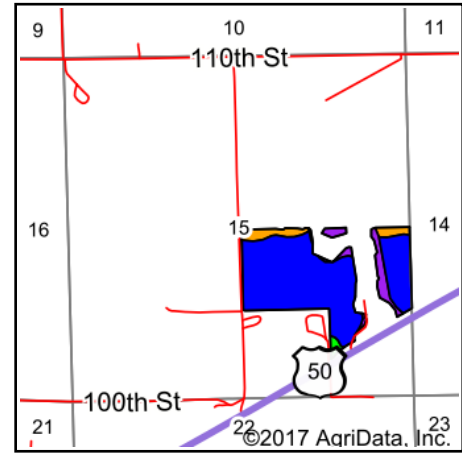
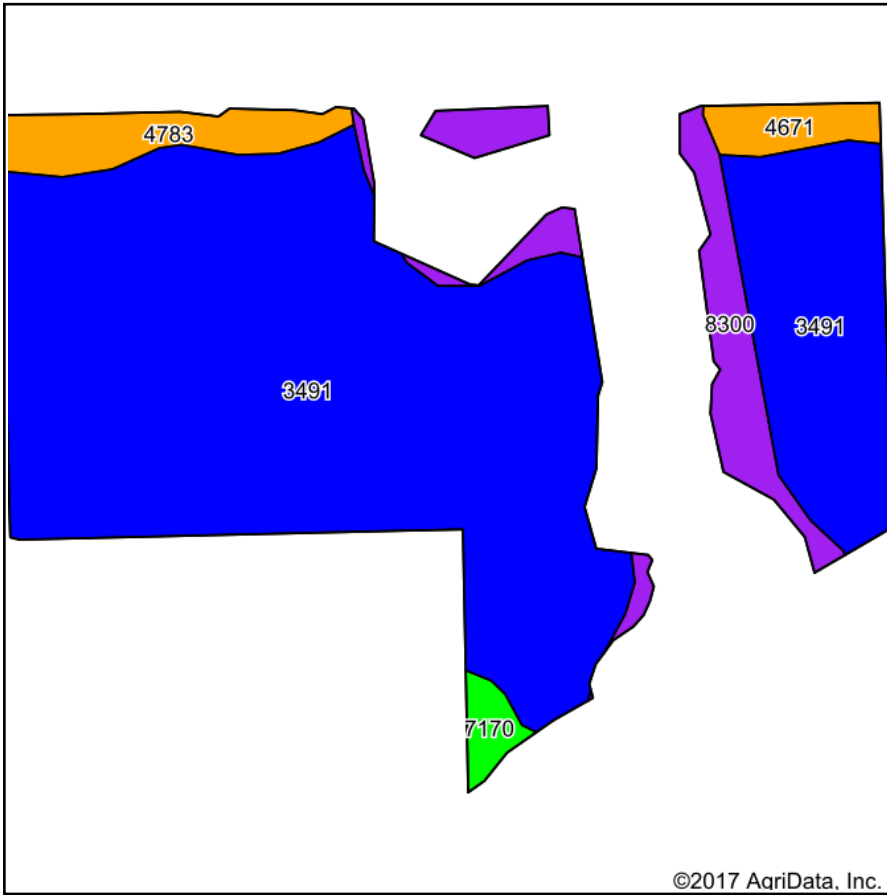
CUSTOMIZED ONLINE MAPPING
© AgriData, Inc. 2017 www.AgriDataInc.com

15-21S-4E
Marion County
Kansas



9/25/2017

Soils Map



State: **Kansas**
 County: **Marion**
 Location: **15-21S-4E**
 Township: **Fairplay**
 Acres: **65.86**
 Date: **9/25/2017**

Maps Provided By:

 CUSTOMIZED ONLINE MAPPING
 © AgriData, Inc. 2017 www.AgriDataInc.com



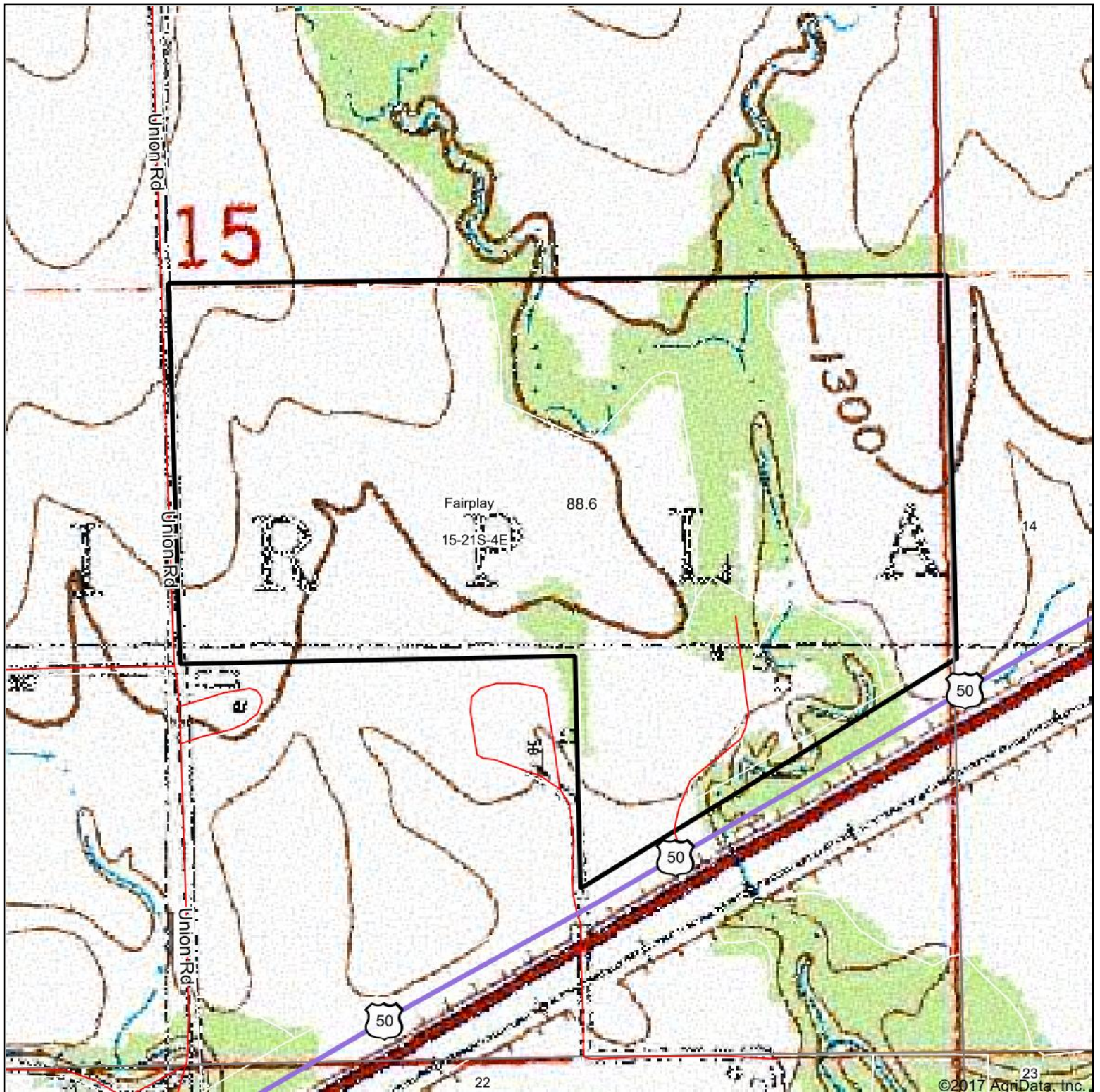
Area Symbol: KS115, Soil Area Version: 13

Cod e	Soil Description	Acres	Percent of field	Non-Irr Class Legend	Non-Irr Class *c	Irr Class *c
3491	Wells loam, 1 to 3 percent slopes	54.75	83.1%		Ile	Ile
8300	Verdigris silt loam, channeled, 0 to 2 percent slopes, frequently flooded	5.49	8.3%		Vw	
4783	Tully silty clay loam, 3 to 7 percent slopes	3.17	4.8%		IIIe	IIIe
4671	Irwin silty clay loam, 1 to 3 percent slopes	1.55	2.4%		IIIs	IIIs
7170	Reading silt loam, rarely flooded	0.90	1.4%		Iw	Iw

*c: Using Capabilities Class Dominant Condition Aggregation Method

Soils data provided by USDA and NRCS.

Topography Map

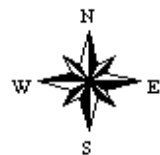


©2017 AgriData, Inc.

map center: 38° 13' 16.56, -96° 58' 25.93

0ft 522ft 1043ft

15-21S-4E
Marion County
Kansas



9/25/2017

Maps Provided By:

CUSTOMIZED ONLINE MAPPING
© AgriData, Inc. 2017 www.AgriDataInc.com