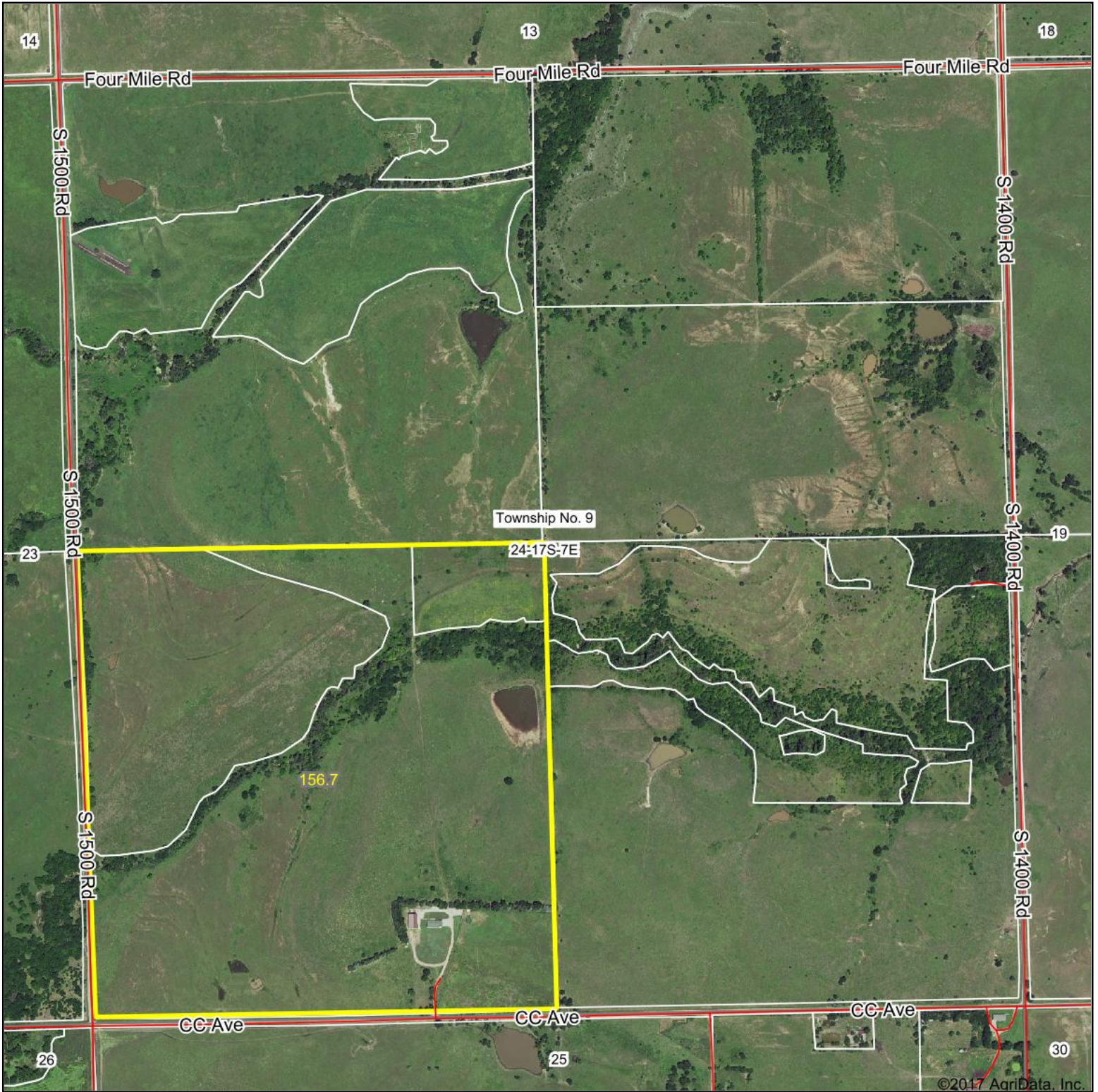
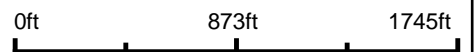


Aerial Map



©2017 AgriData, Inc.

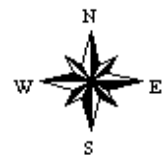
map center: 38° 33' 30.46, -96° 36' 23.18



Maps Provided By:

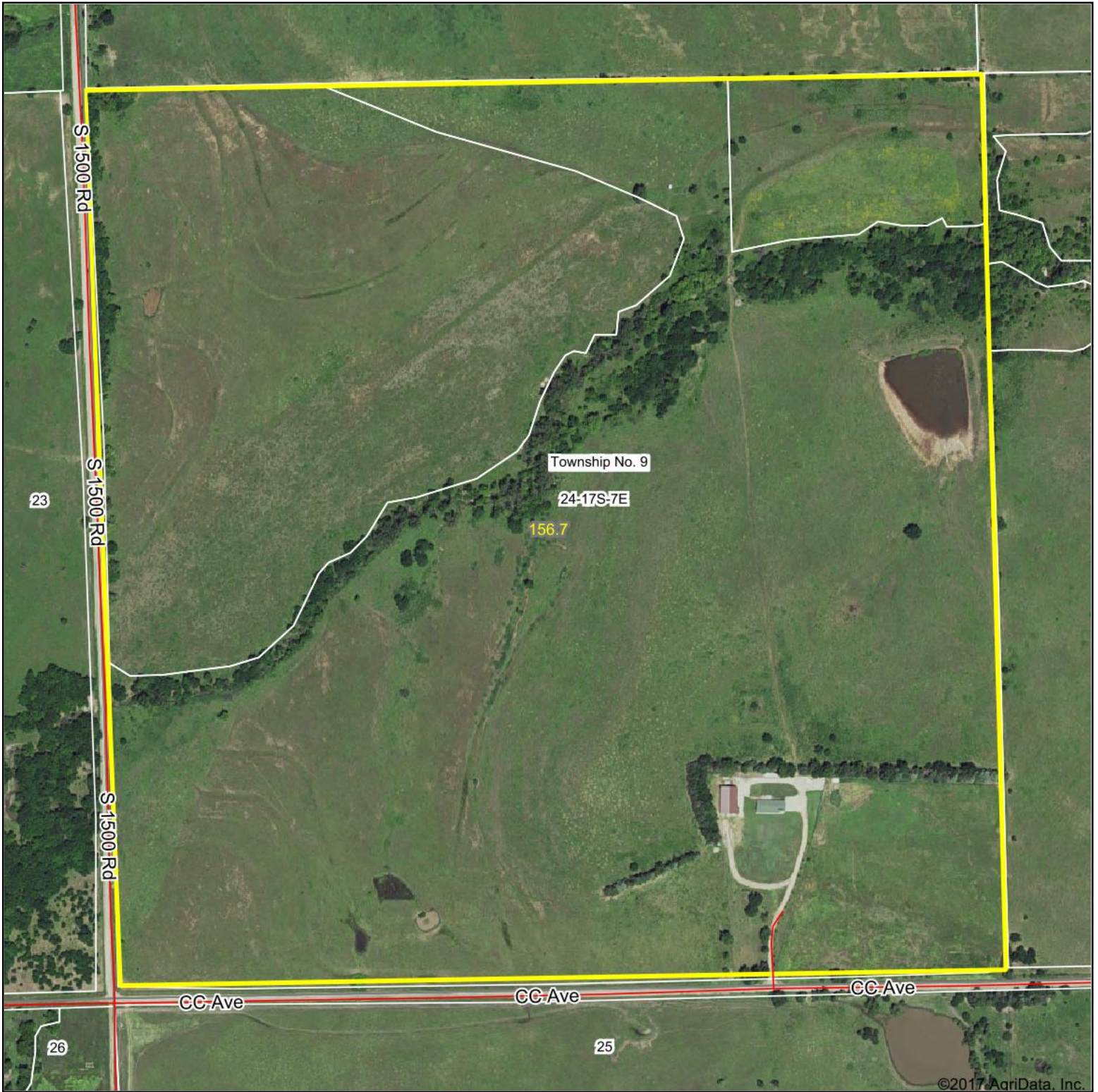
CUSTOMIZED ONLINE MAPPING
© AgriData, Inc. 2017 www.AgriDataInc.com

24-17S-7E
Morris County
Kansas



10/12/2017

Aerial Map



©2017 AgriData, Inc.

map center: 38° 33' 17.38, -96° 36' 39.83



Maps Provided By:

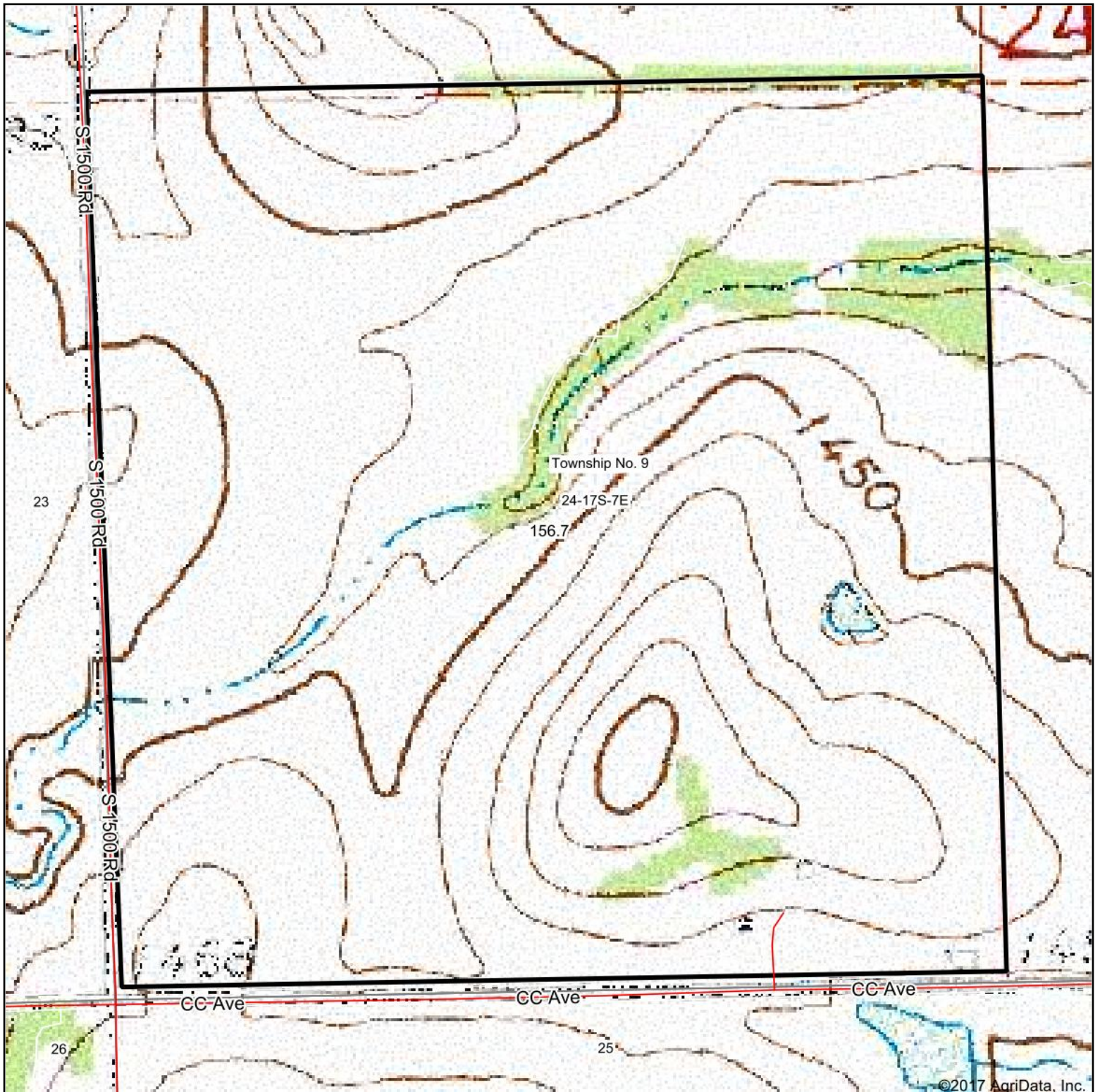
CUSTOMIZED ONLINE MAPPING
© AgriData, Inc. 2017 www.AgriDataInc.com

24-17S-7E
Morris County
Kansas



10/12/2017

Topography Map

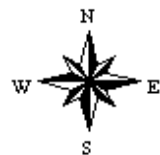


©2017 AgriData, Inc.

map center: 38° 33' 17.38, -96° 36' 39.83



24-17S-7E
Morris County
Kansas

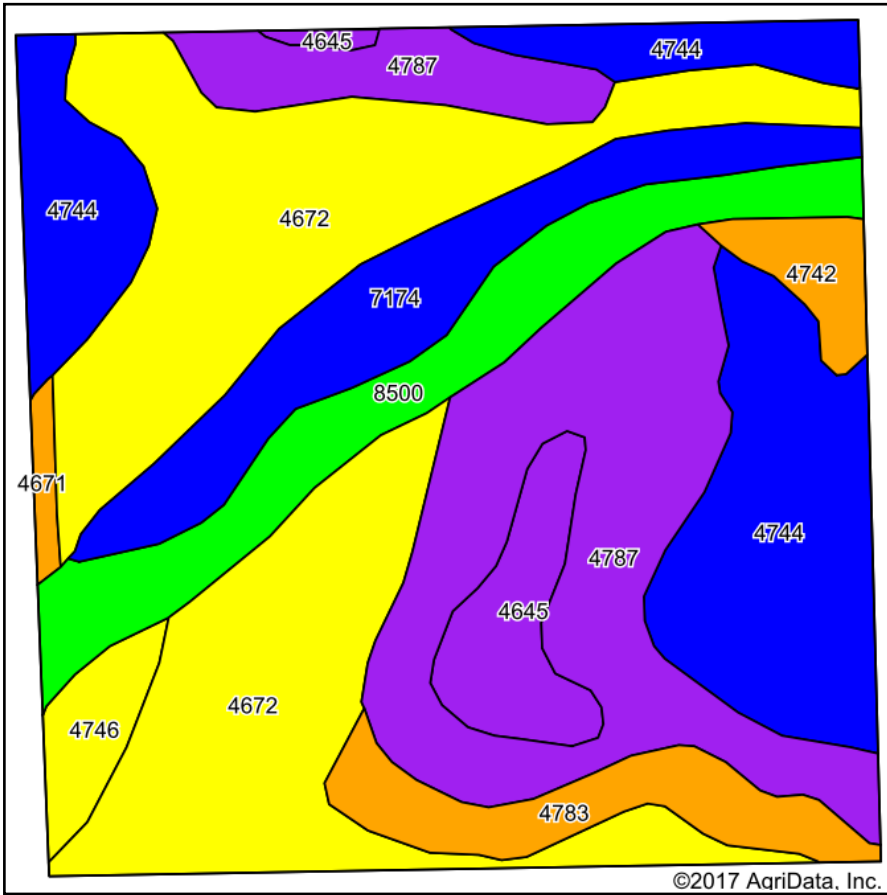


10/12/2017

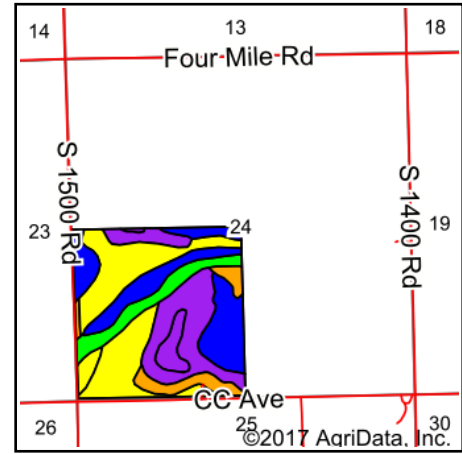
Maps Provided By:

CUSTOMIZED ONLINE MAPPING
© AgriData, Inc. 2017 www.AgriDataInc.com

Soils Map



Soils data provided by USDA and NRCS.













State: **Kansas**
 County: **Morris**
 Location: **24-17S-7E**
 Township: **Township No. 9**
 Acres: **156.7**
 Date: **10/12/2017**

Maps Provided By:

 CUSTOMIZED ONLINE MAPPING
 © AgriData, Inc. 2017 www.AgriDataInc.com



Area Symbol: KS127, Soil Area Version: 13

Code	Soil Description	Acres	Percent of field	Non-Irr Class Legend	Non-Irr Class *c	Irr Class *c
4672	Irwin silty clay loam, 1 to 3 percent slopes, eroded	48.73	31.1%		IVe	IVe
4787	Tully soils, 5 to 15 percent slopes	33.07	21.1%		Vle	Vle
4744	Labette-Dwight complex, 0 to 3 percent slopes	27.35	17.5%		Ile	Ile
8500	Mason and Reading silt loams, rarely flooded	13.85	8.8%		Iw	Iw
7174	Reading silt loam, 1 to 3 percent slopes	12.77	8.1%		Ile	Ile
4783	Tully silty clay loam, 3 to 7 percent slopes	7.43	4.7%		IIIe	IIIe
4645	Florence cherty silt loam, 5 to 15 percent slopes	6.38	4.1%		Vle	Vle
4746	Labette-Sogn silty clay loam, 0 to 8 percent slopes	3.24	2.1%		IVe	IIIe
4742	Labette silty clay loam, 3 to 7 percent slopes	2.92	1.9%		IIIe	Ile
4671	Irwin silty clay loam, 1 to 3 percent slopes	0.96	0.6%		IIIe	IIIe

*c: Using Capabilities Class Dominant Condition Aggregation Method

Soils data provided by USDA and NRCS.