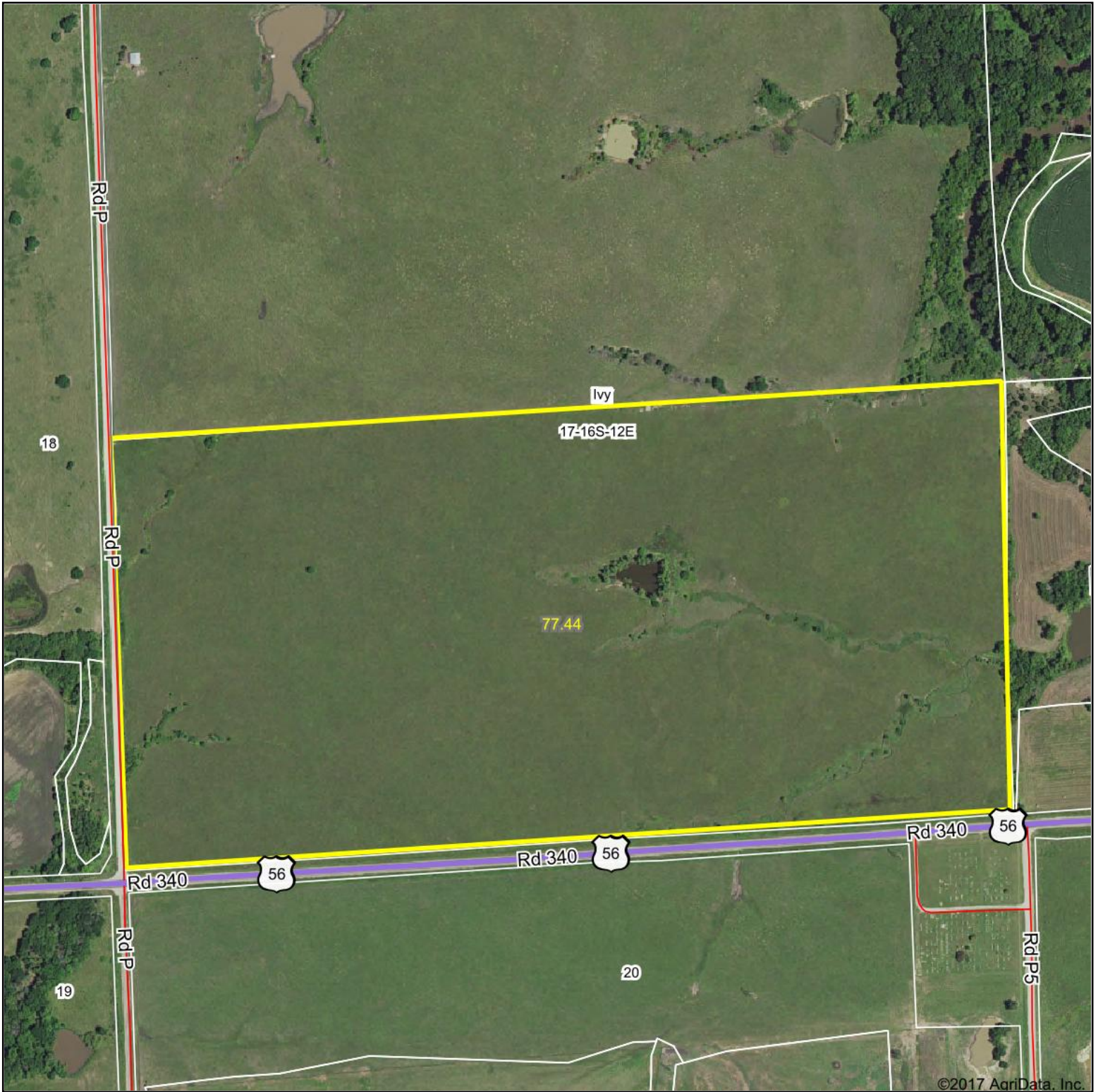
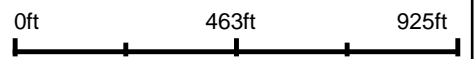


Aerial Map



©2017 AgriData, Inc.

map center: 38° 39' 15.18, -96° 6' 42



Maps Provided By:

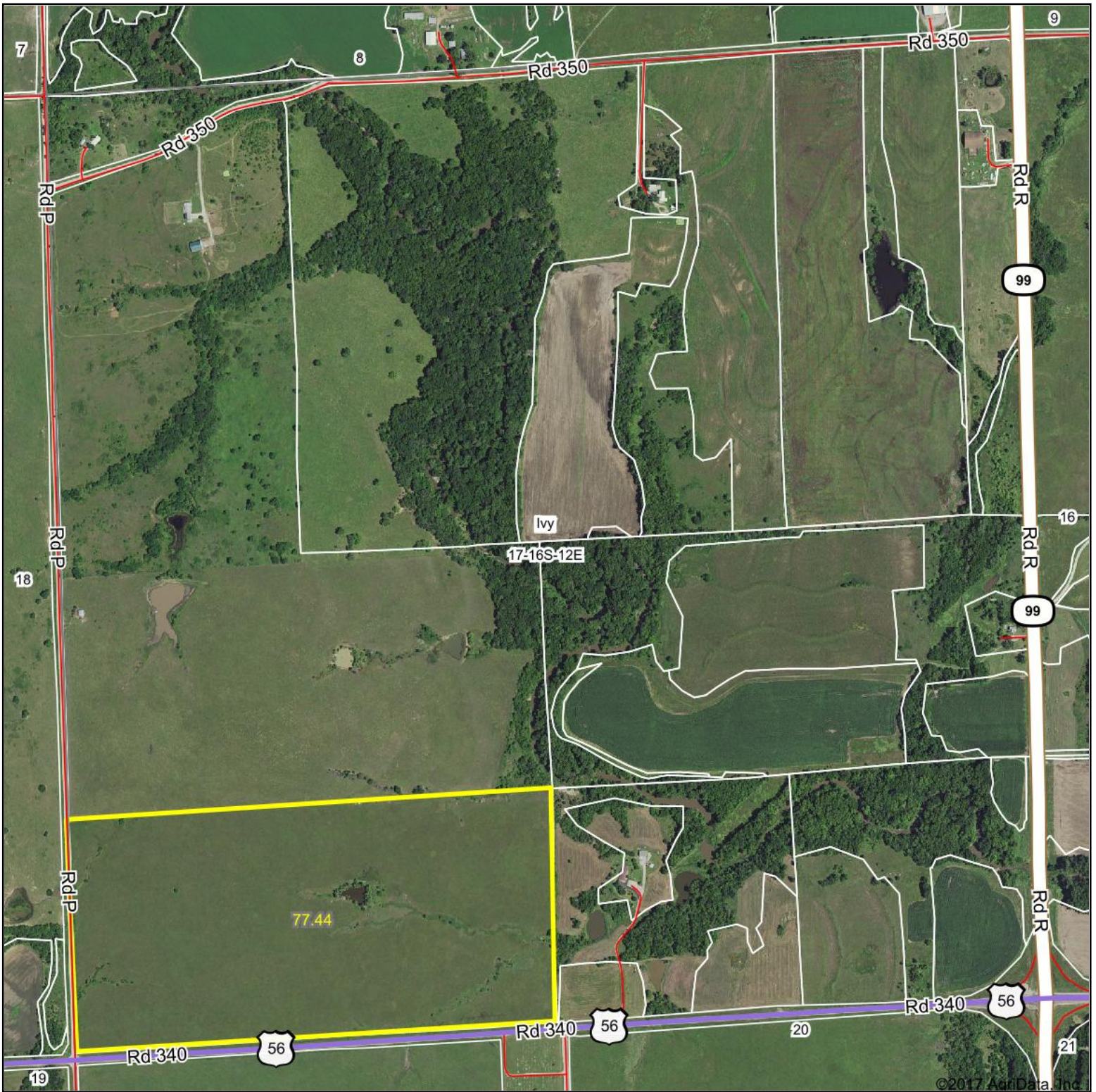
CUSTOMIZED ONLINE MAPPING
© AgriData, Inc. 2017 www.AgriDataInc.com

17-16S-12E
Lyon County
Kansas



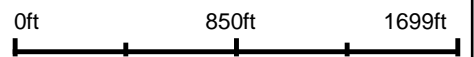
11/14/2017

Aerial Map



©2017 AgriData, Inc.

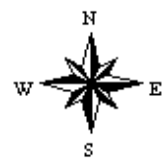
map center: 38° 39' 32.65, -96° 6' 24.58



Maps Provided By:

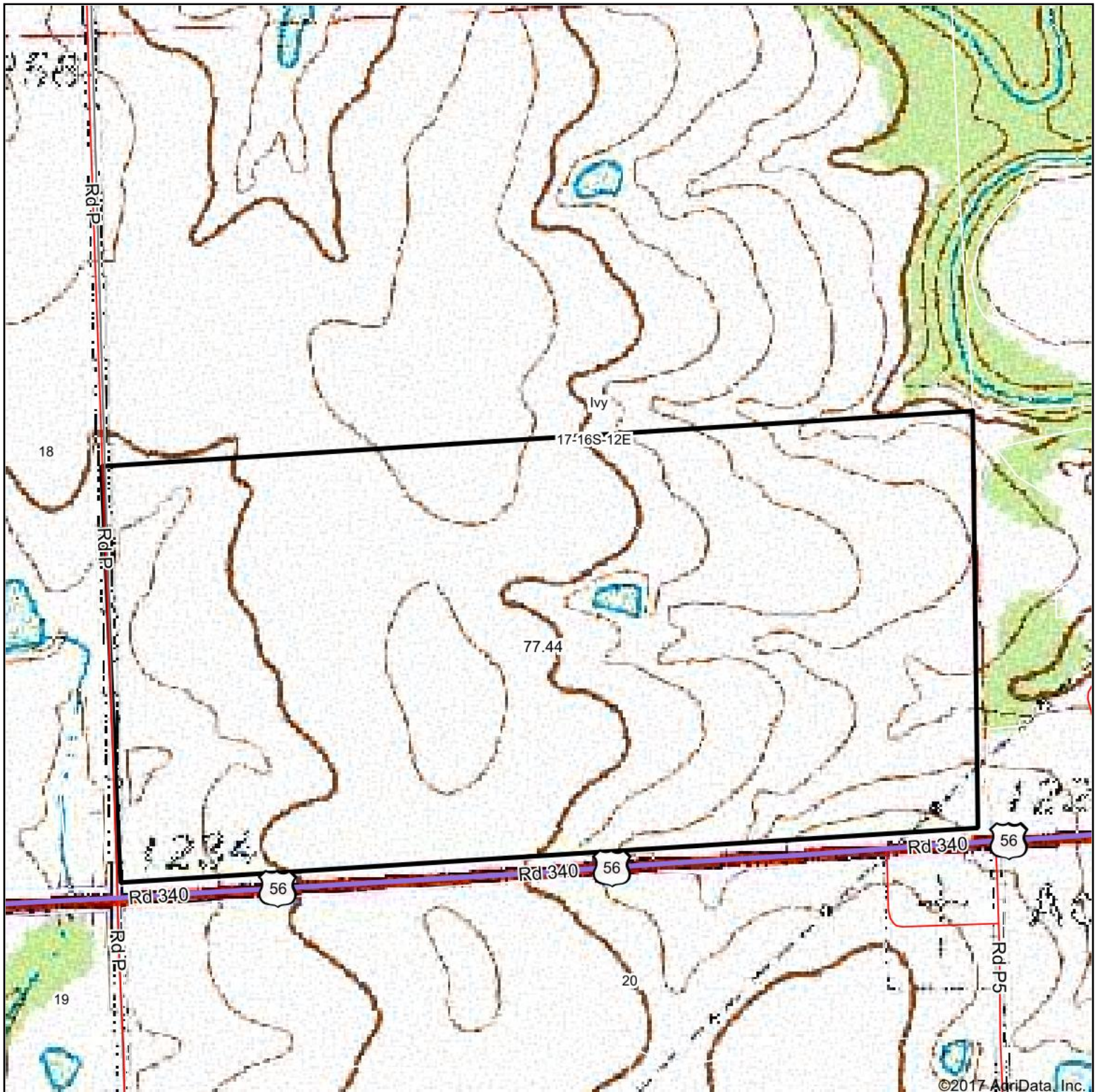
CUSTOMIZED ONLINE MAPPING
© AgriData, Inc. 2017 www.AgriDataInc.com

17-16S-12E
Lyon County
Kansas



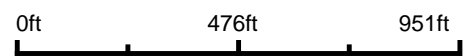
11/26/2017

Topography Map

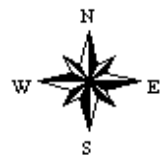


©2017 AgriData, Inc.

map center: 38° 39' 15.85, -96° 6' 41.22



17-16S-12E
Lyon County
Kansas

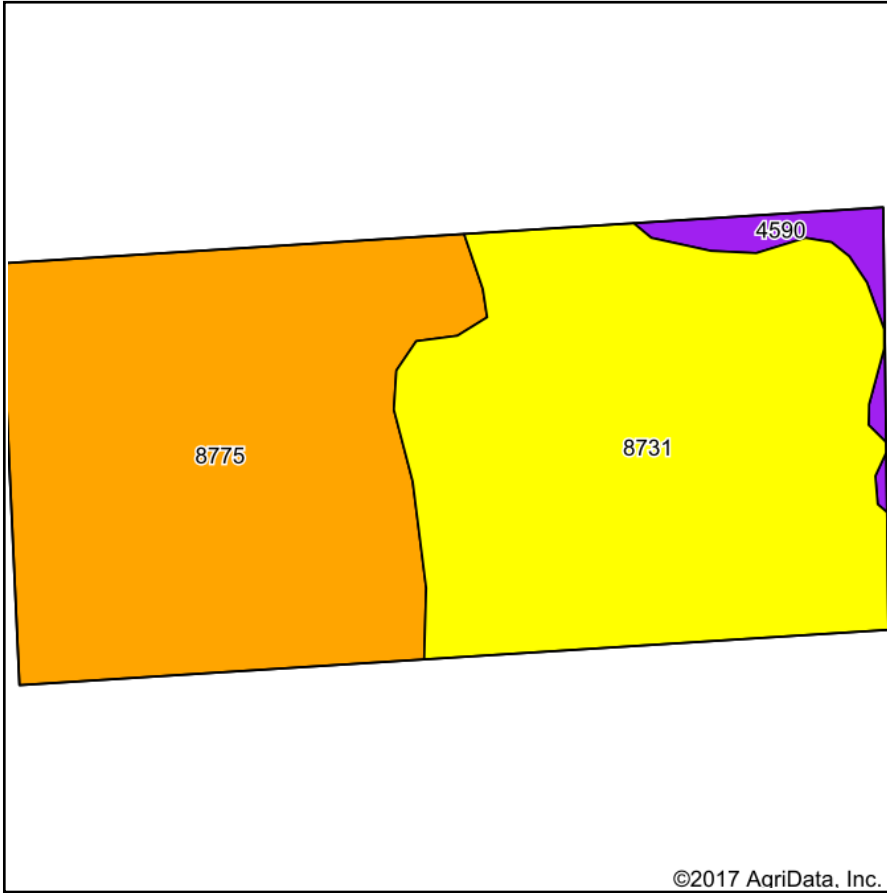


Maps Provided By:

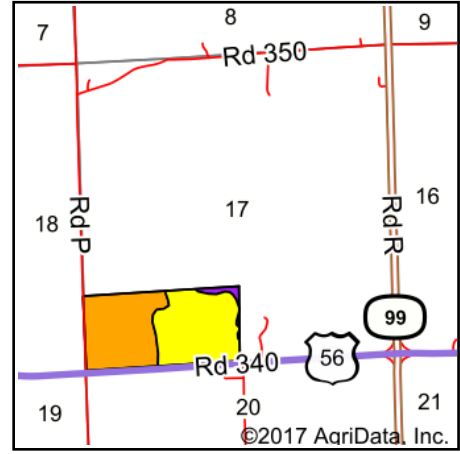
CUSTOMIZED ONLINE MAPPING
© AgriData, Inc. 2017 www.AgriDataInc.com

11/26/2017

Soils Map



Soils data provided by USDA and NRCS.



State: **Kansas**
 County: **Lyon**
 Location: **17-16S-12E**
 Township: **Ivy**
 Acres: **77.44**
 Date: **11/26/2017**

Maps Provided By:



© AgriData, Inc. 2017

www.AgriDataInc.com



Area Symbol: KS111, Soil Area Version: 15

Code	Soil Description	Acres	Percent of field	Non-Irr Class Legend	Non-Irr Class *c
8731	Eram silt loam, 3 to 7 percent slopes	38.27	49.4%		IVe
8775	Kenoma silt loam, 1 to 3 percent slopes	37.00	47.8%		IIIe
4590	Clime-Sogn complex, 3 to 20 percent slopes	2.17	2.8%		VIe

*c: Using Capabilities Class Dominant Condition Aggregation Method

Soils data provided by USDA and NRCS.