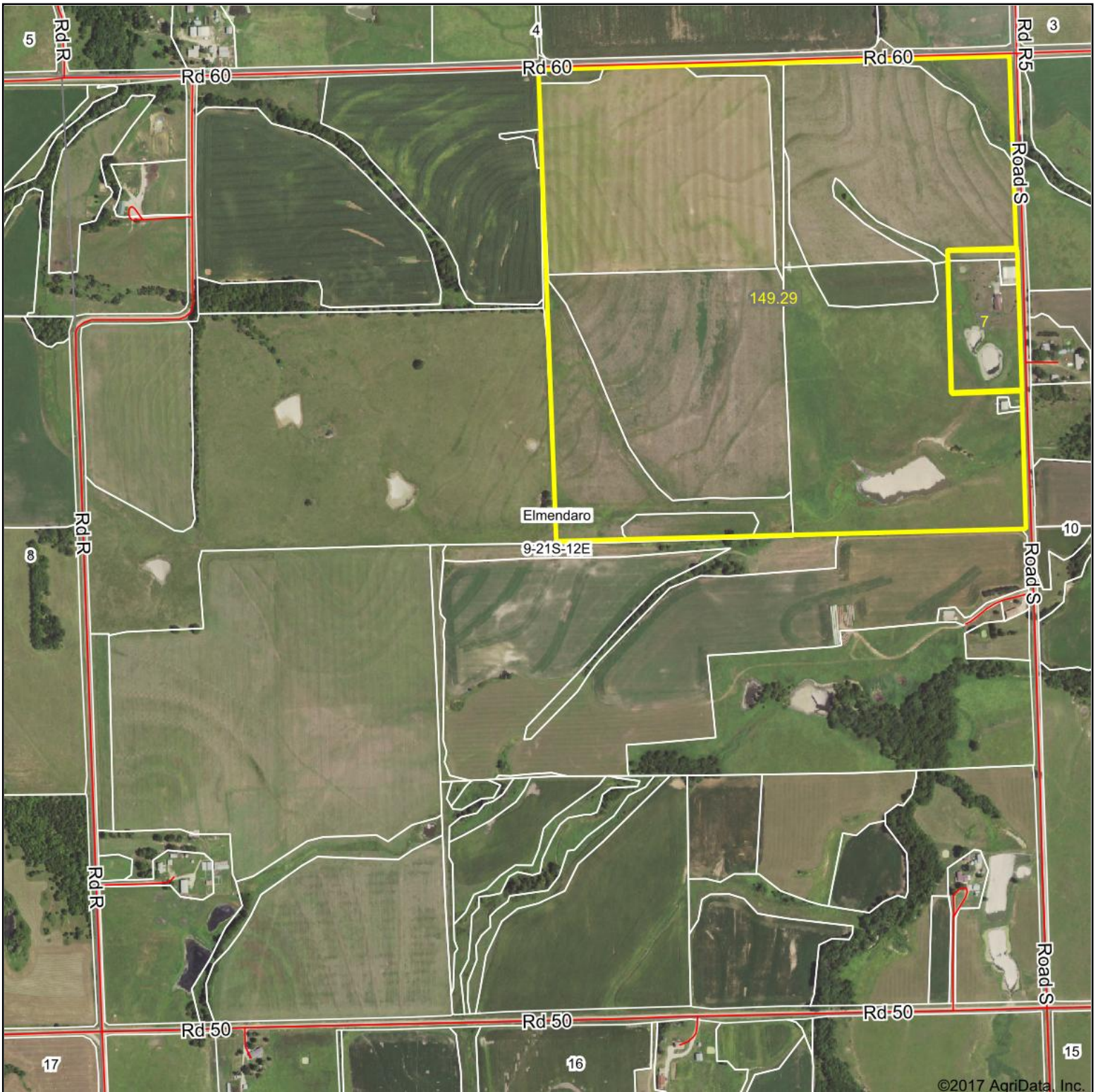
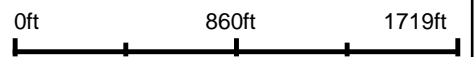


Aerial Map



©2017 AgriData, Inc.

map center: 38° 14' 13.43, -96° 5' 42.14



Maps Provided By:

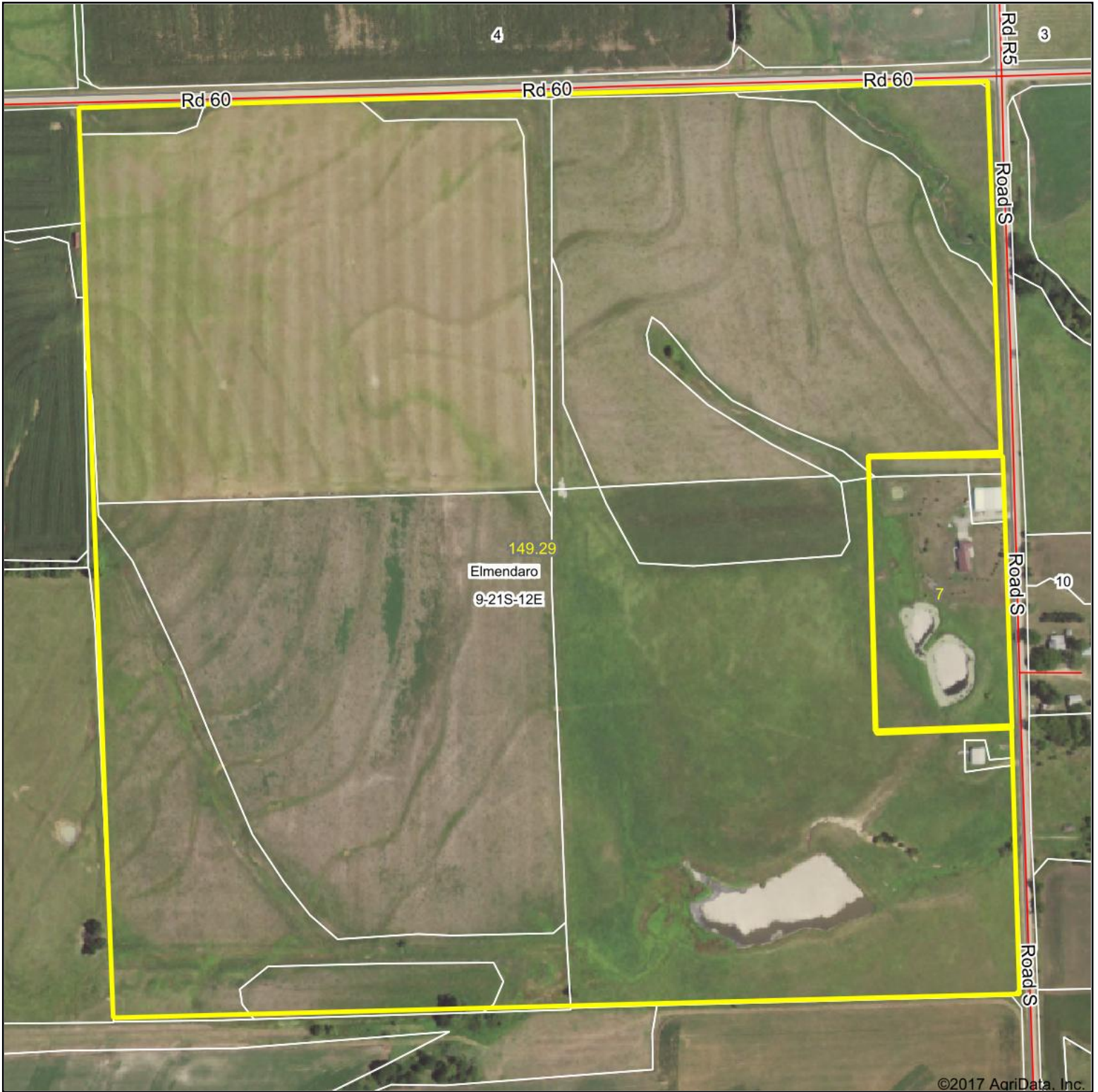
CUSTOMIZED ONLINE MAPPING
© AgriData, Inc. 2017 www.AgriDataInc.com

9-21S-12E
Lyon County
Kansas



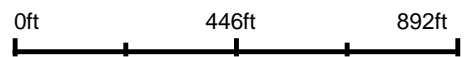
1/8/2018

Aerial Map



©2017 AgriData, Inc.

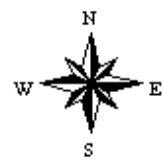
map center: 38° 14' 26.75, -96° 5' 25.39



Maps Provided By:

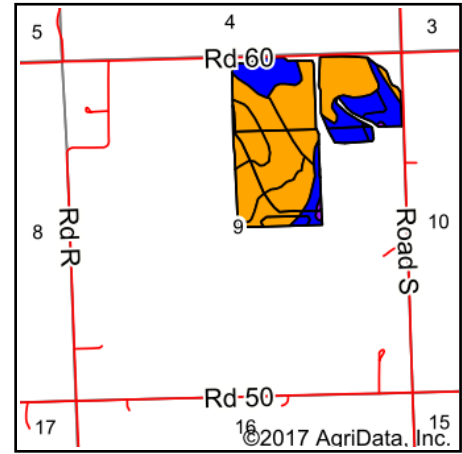
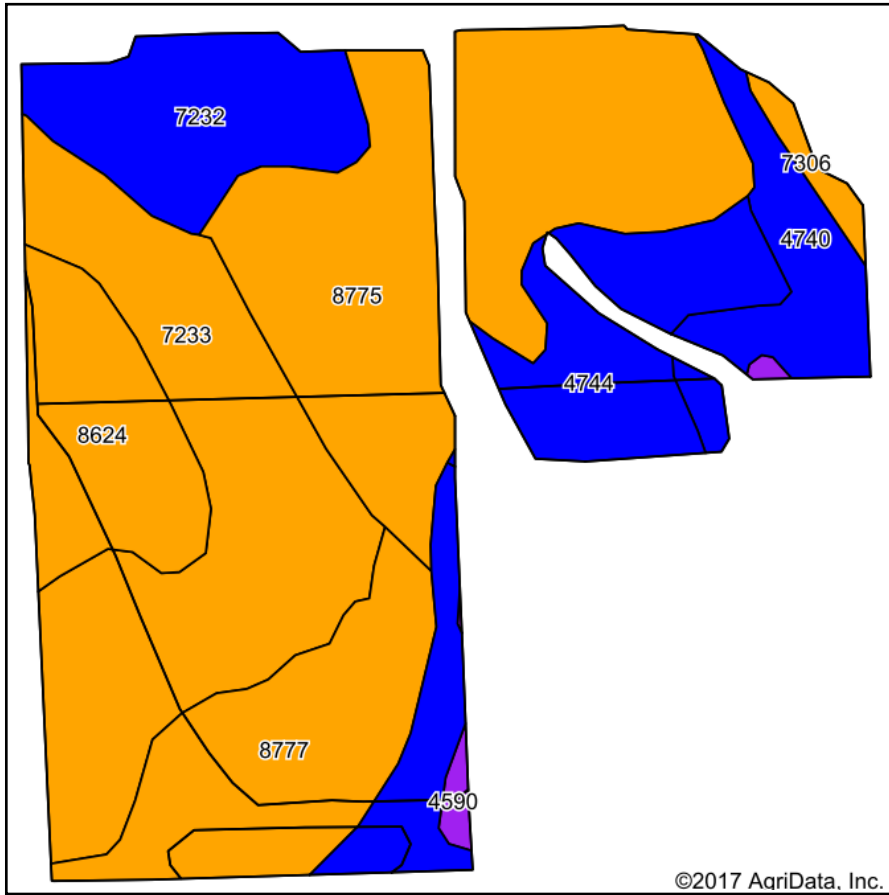
CUSTOMIZED ONLINE MAPPING
© AgriData, Inc. 2017 www.AgriDataInc.com

9-21S-12E
Lyon County
Kansas



1/8/2018

Soils Map



State: **Kansas**
 County: **Lyon**
 Location: **9-21S-12E**
 Township: **Elmendaro**
 Acres: **107.87**
 Date: **1/8/2018**

©2017 AgriData, Inc.

Maps Provided By:

 CUSTOMIZED ONLINE MAPPING
 © AgriData, Inc. 2017 www.AgriDataInc.com



Soils data provided by USDA and NRCS.

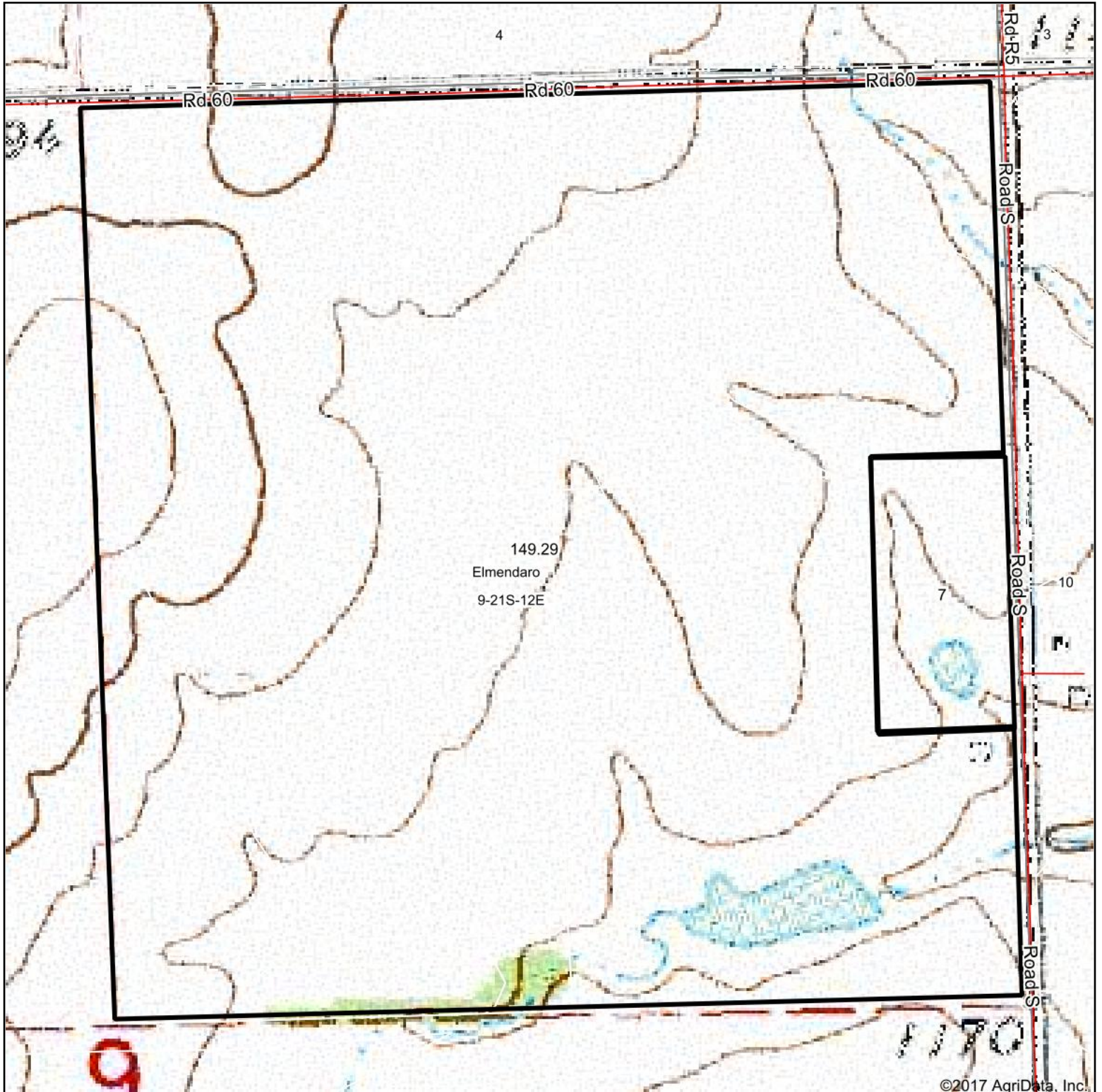
Area Symbol: KS111, Soil Area Version: 16

Code	Soil Description	Acres	Percent of field	Non-Irr Class Legend	Non-Irr Class *c	Irr Class *c	Grain sorghum	Soybeans	Warm season grasses	Winter wheat	Smooth brome grass	Fescue	Brome grass hay	Alfalfa hay
8775	Kenoma silt loam, 1 to 3 percent slopes	28.91	26.8%		Ille									
7233	Elmont silt loam, 3 to 7 percent slopes	24.57	22.8%		Ille		71	27	1	32	3	4	3	4
8777	Kenoma silty clay loam, 1 to 3 percent slopes, eroded	13.15	12.2%		Ille									
4740	Labette silty clay loam, 1 to 3 percent slopes	10.65	9.9%		Ile	Ile								
7232	Elmont silt loam, 1 to 3 percent slopes	9.95	9.2%		Ile		75	30	1	35	3	4	3	4
4744	Labette-Dwight complex, 0 to 3 percent slopes	9.50	8.8%		Ile	Ile								
8624	Bates loam, 3 to 7 percent slopes, eroded	9.31	8.6%		Ille									
7306	Martin silty clay, 3 to 7 percent slopes, eroded	1.10	1.0%		Ille	Ille								
4590	Clime-Sogn complex, 3 to 20 percent slopes	0.73	0.7%		Vle									
Weighted Average							23.1	8.9	0.3	10.5	1	1.3	1	1.3

*c: Using Capabilities Class Dominant Condition Aggregation Method

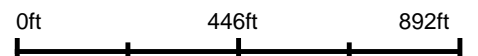
Soils data provided by USDA and NRCS.

Topography Map

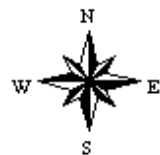


©2017 AgriData, Inc.

map center: 38° 14' 26.75, -96° 5' 25.39



9-21S-12E
Lyon County
Kansas



1/8/2018

Maps Provided By:



© AgriData, Inc. 2017

www.AgriDataInc.com