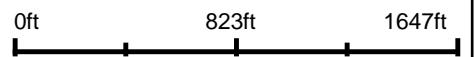


Aerial Map

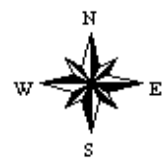


map center: 38° 26' 33.38, -96° 56' 21.16



Maps Provided By:
 **surety**[®]
CUSTOMIZED ONLINE MAPPING
© AgriData, Inc. 2018 www.AgriDataInc.com

36-18S-4E
Marion County
Kansas



3/11/2018

Aerial Map



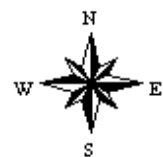
©2018 AgriData, Inc.

map center: 38° 26' 46.91, -96° 55' 56.55



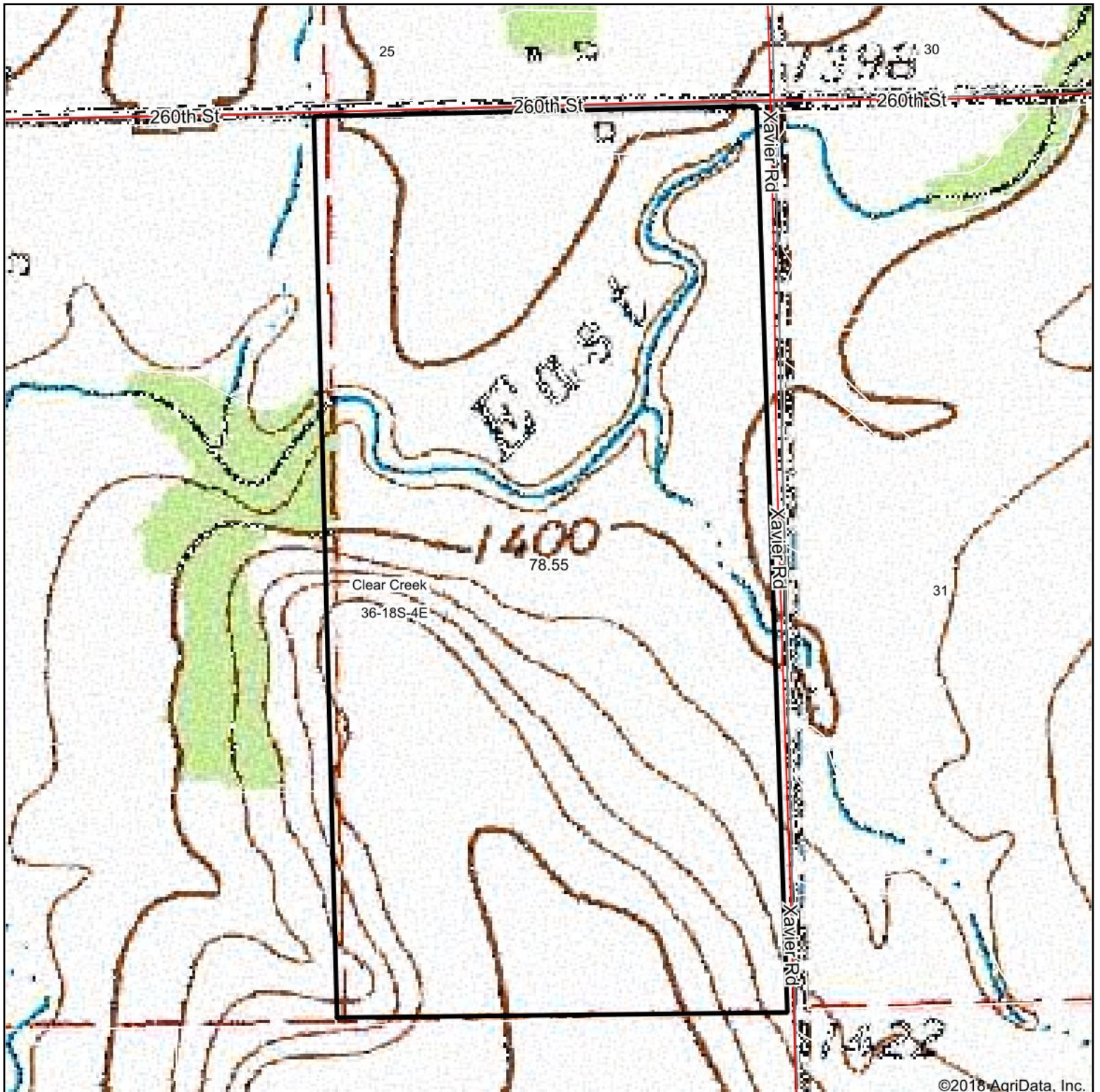
Maps Provided By:
 **surety**
CUSTOMIZED ONLINE MAPPING
© AgriData, Inc. 2018 www.AgriDataInc.com

36-18S-4E
Marion County
Kansas



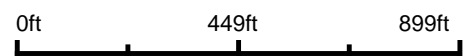
3/11/2018

Topography Map

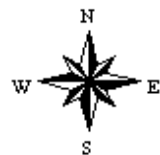


©2018 AgriData, Inc.

map center: 38° 26' 46.91, -96° 55' 56.55



36-18S-4E
Marion County
Kansas

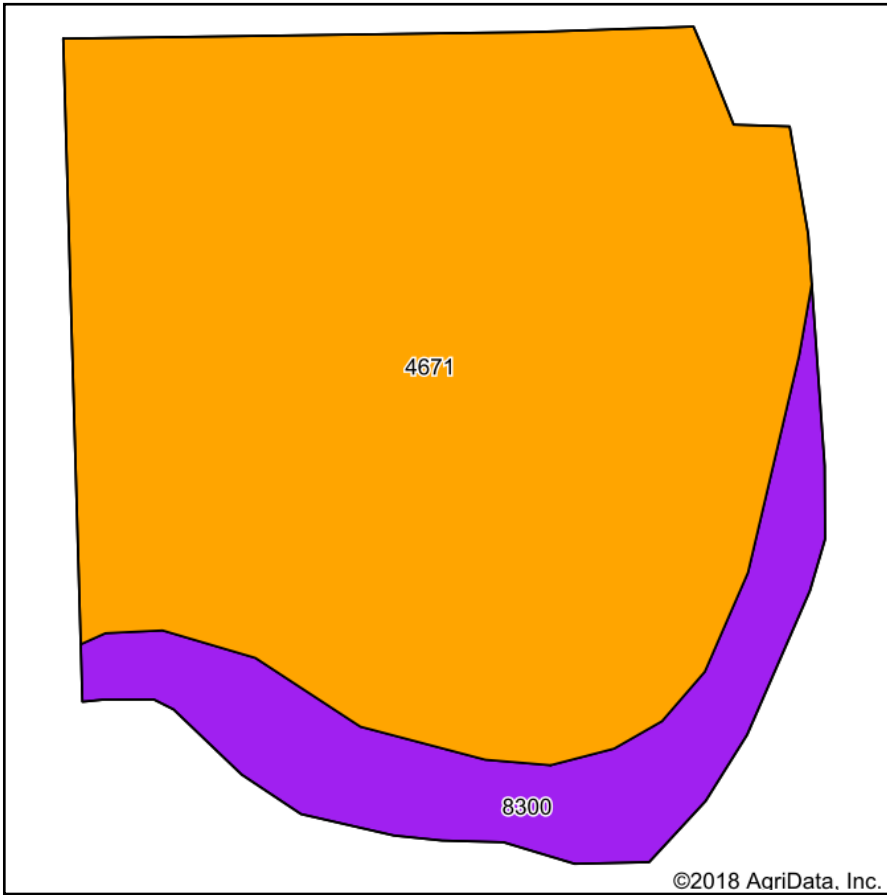


3/11/2018

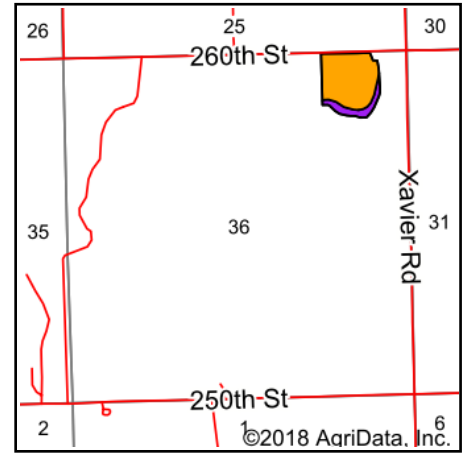
Maps Provided By:

CUSTOMIZED ONLINE MAPPING
© AgriData, Inc. 2018 www.AgriDataInc.com

Soils Map



Soils data provided by USDA and NRCS.



State: **Kansas**
 County: **Marion**
 Location: **36-18S-4E**
 Township: **Clear Creek**
 Acres: **17.99**
 Date: **3/11/2018**

Maps Provided By:



Area Symbol: KS115, Soil Area Version: 14

Code	Soil Description	Acres	Percent of field	Non-Irr Class Legend	Non-Irr Class *c	Irr Class *c
4671	Inwin silty clay loam, 1 to 3 percent slopes	15.19	84.4%		IIIs	IIIs
8300	Verdigris silt loam, channeled, 0 to 2 percent slopes, frequently flooded	2.80	15.6%		Vw	

*c: Using Capabilities Class Dominant Condition Aggregation Method

Soils data provided by USDA and NRCS.