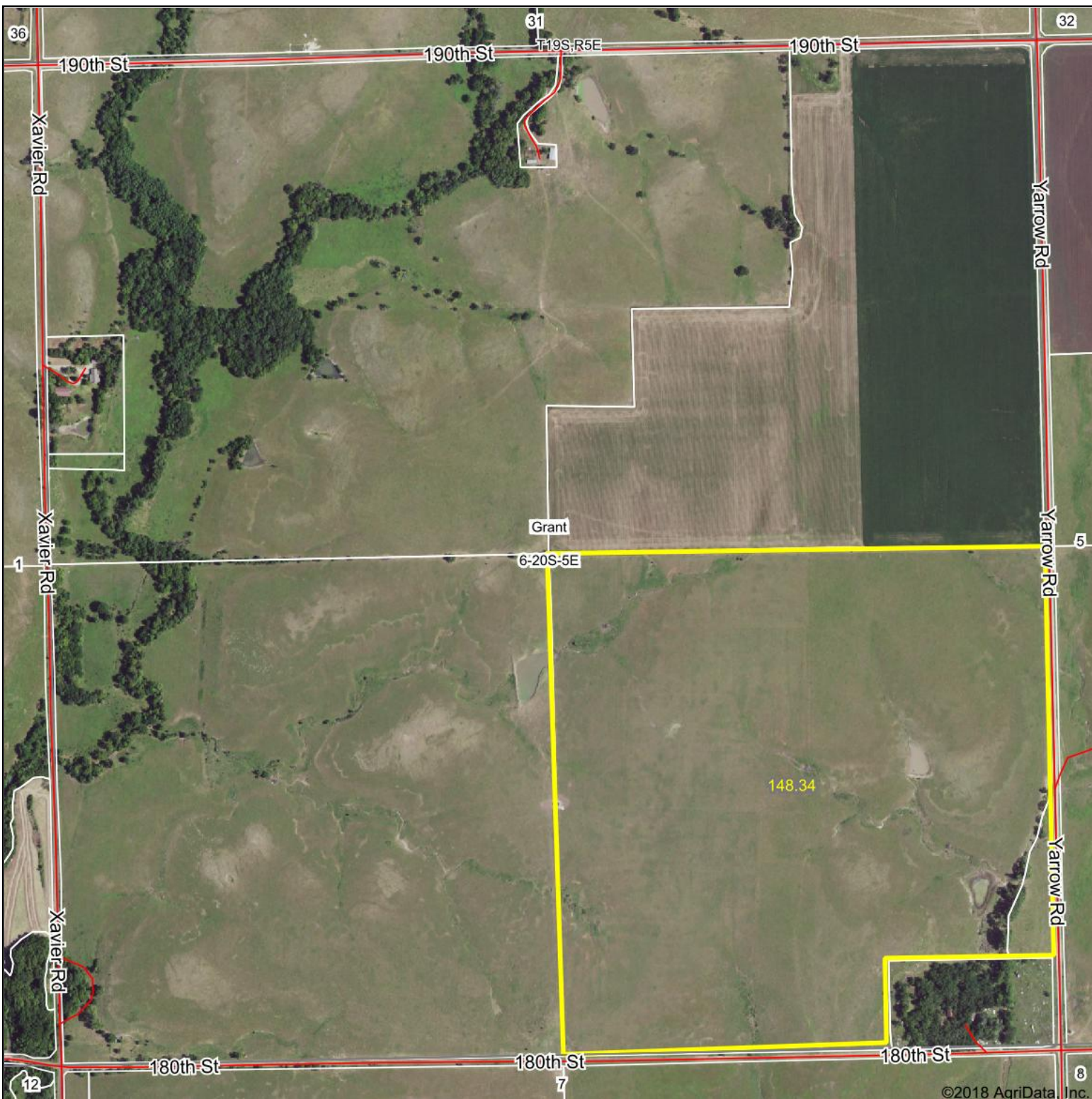


Aerial Map

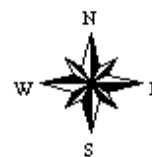


map center: 38° 20' 27.95, -96° 55' 14.15

0ft 823ft 1647ft

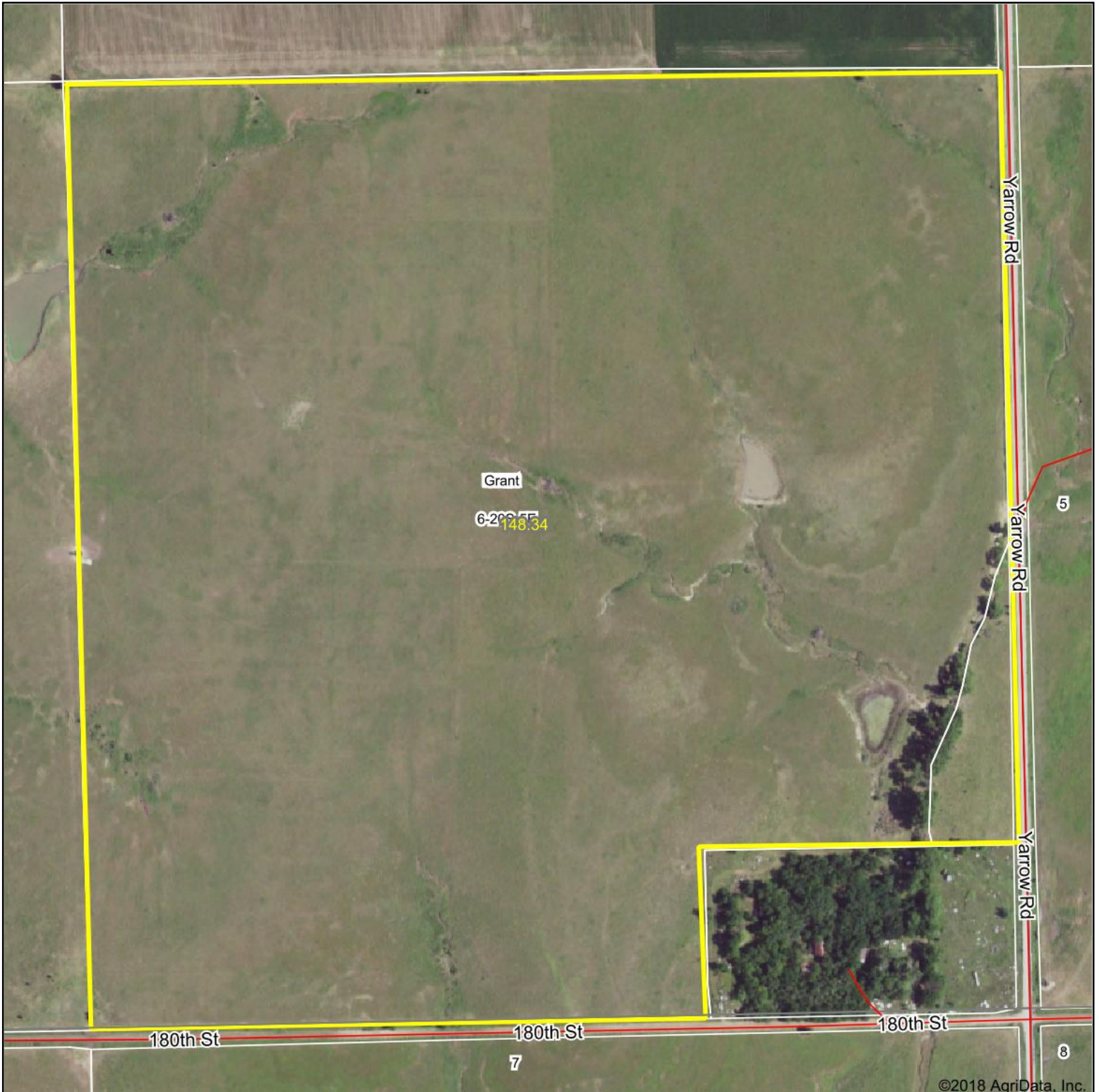
Maps Provided By:
surety
CUSTOMIZED ONLINE MAPPING
© Agridata, Inc. 2018 www.AgridataInc.com

6-20S-5E
Marion County
Kansas



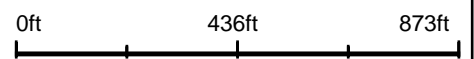
10/31/2018

Aerial Map



©2018 AgriData, Inc.

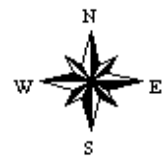
map center: 38° 20' 14.71, -96° 54' 57.54



Maps Provided By:

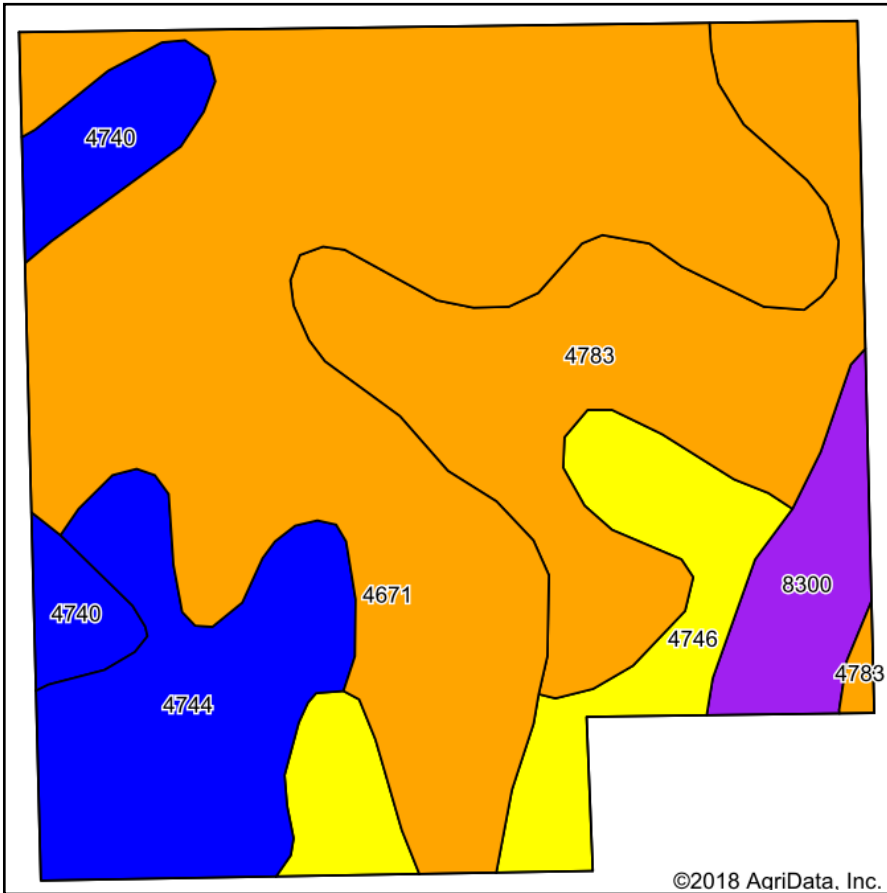
CUSTOMIZED ONLINE MAPPING
© AgriData, Inc. 2018 www.AgriDataInc.com

6-20S-5E
Marion County
Kansas

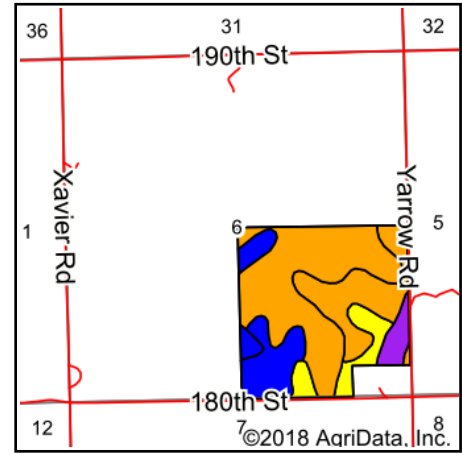


10/31/2018

Soils Map



Soils data provided by USDA and NRCS.



State: **Kansas**
 County: **Marion**
 Location: **6-20S-5E**
 Township: **Grant**
 Acres: **148.34**
 Date: **10/31/2018**

Maps Provided By:



Area Symbol: KS115, Soil Area Version: 15

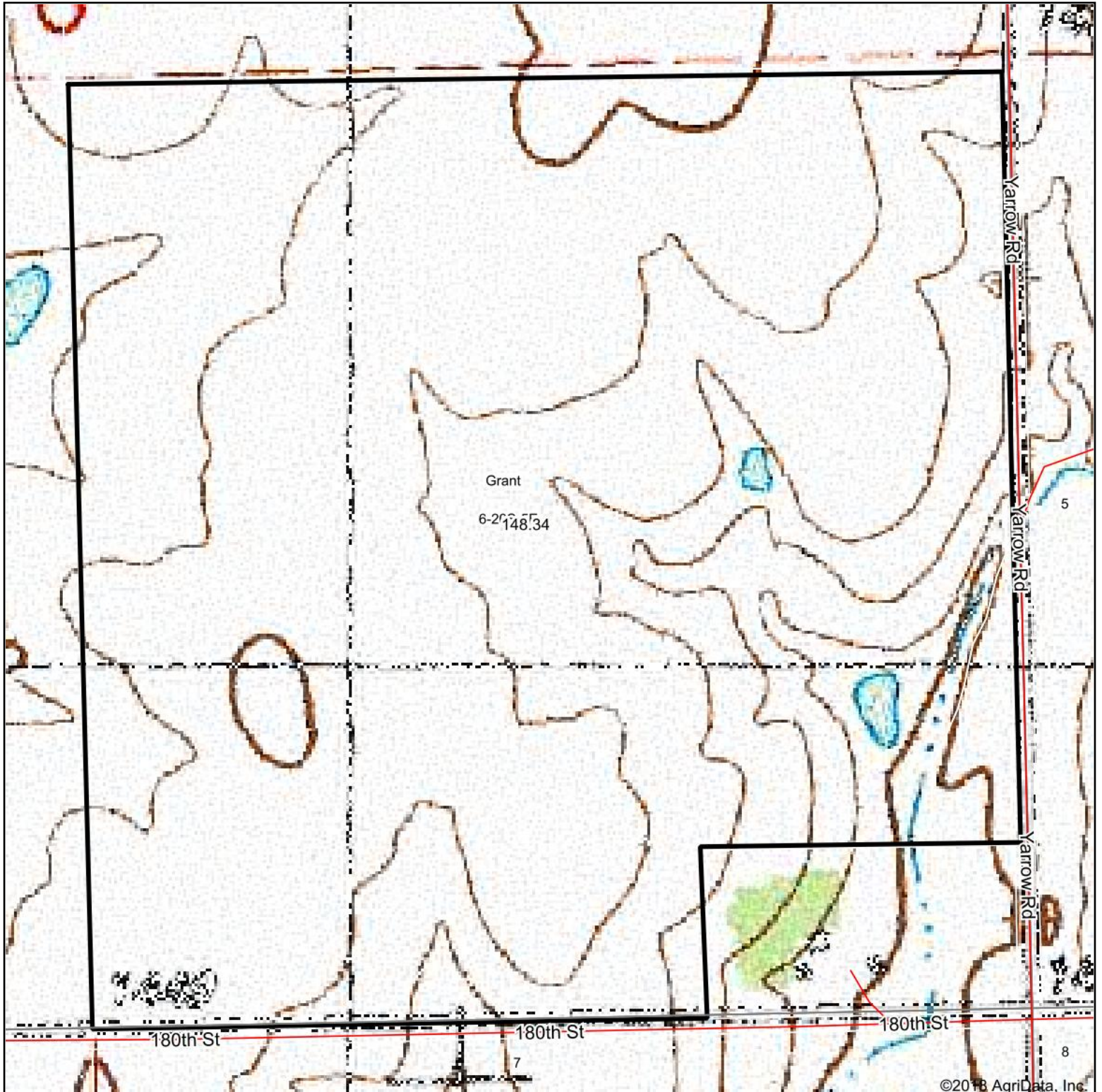
Code	Soil Description	Acres	Percent of field	Non-Irr Class Legend	Non-Irr Class *c	Irr Class *c	*n NCCPI Soybeans
4671	Irwin silty clay loam, 1 to 3 percent slopes	69.83	47.1%		IIIIs	IIIIs	57
4783	Tully silty clay loam, 3 to 7 percent slopes	31.10	21.0%		IIIle	IIIle	61
4744	Labette-Dwight complex, 0 to 3 percent slopes	18.86	12.7%		Ile	Ile	36
4746	Labette-Sogn silty clay loam, 0 to 8 percent slopes	14.09	9.5%		IVe	IIIle	28
4740	Labette silty clay loam, 1 to 3 percent slopes	7.52	5.1%		Ile	Ile	40
8300	Verdigris silt loam, channeled, 0 to 2 percent slopes, frequently flooded	6.94	4.7%		Vw		39
Weighted Average							*n 50.7

*n: The aggregation method is "Weighted Average using major components"

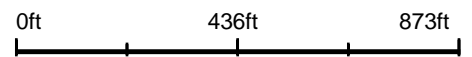
*c: Using Capabilities Class Dominant Condition Aggregation Method

Soils data provided by USDA and NRCS.

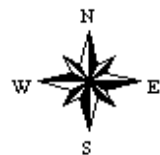
Topography Map



map center: 38° 20' 14.71, -96° 54' 57.54



6-20S-5E
Marion County
Kansas



10/31/2018

Maps Provided By:

CUSTOMIZED ONLINE MAPPING
© AgriData, Inc. 2018 www.AgrIDataInc.com