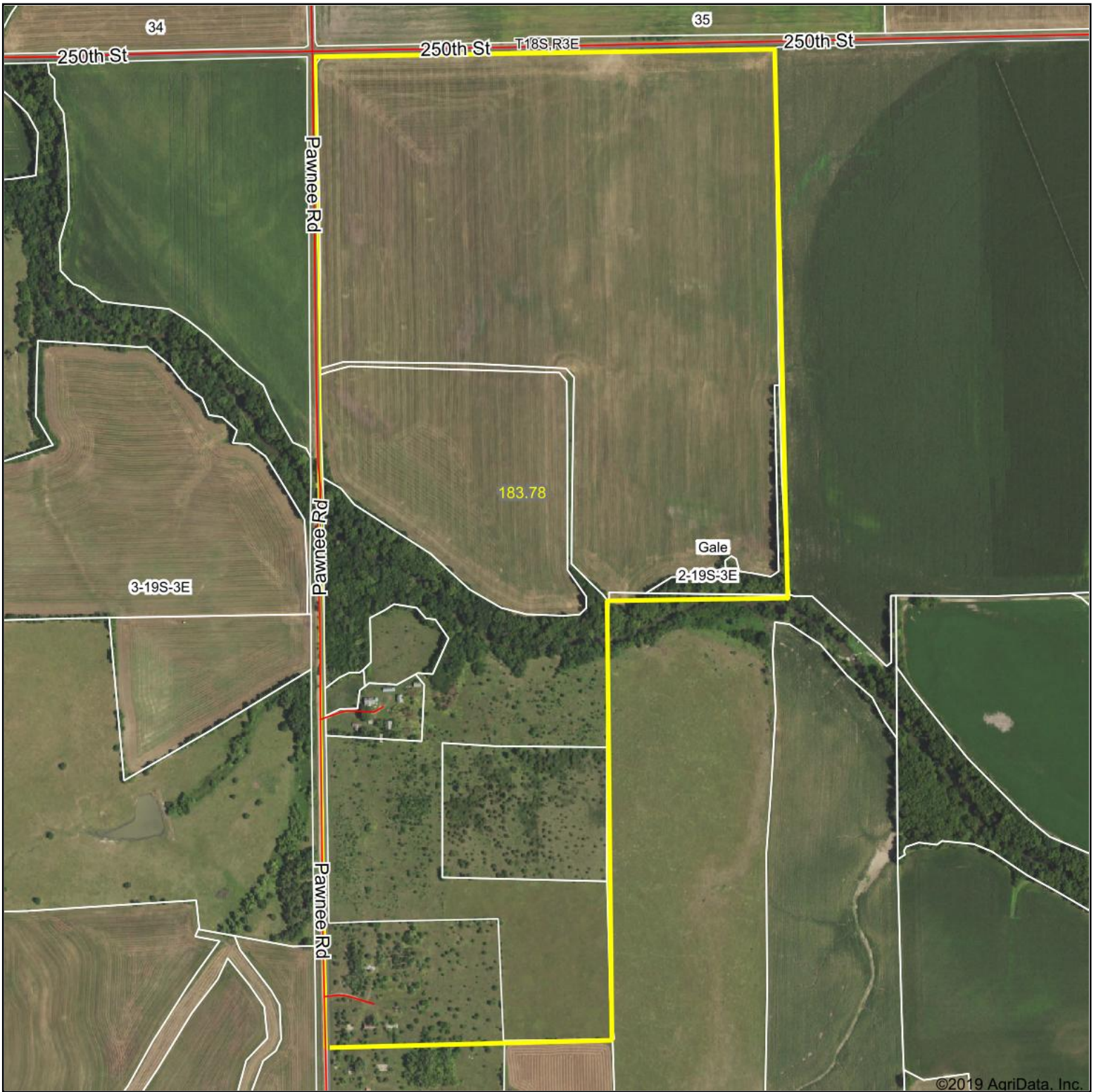
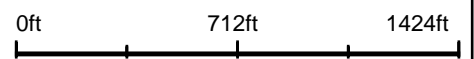


Aerial Map



©2019 AgriData, Inc.

map center: 38° 25' 43.59, -97° 4' 24.57



2-19S-3E
Marion County
Kansas



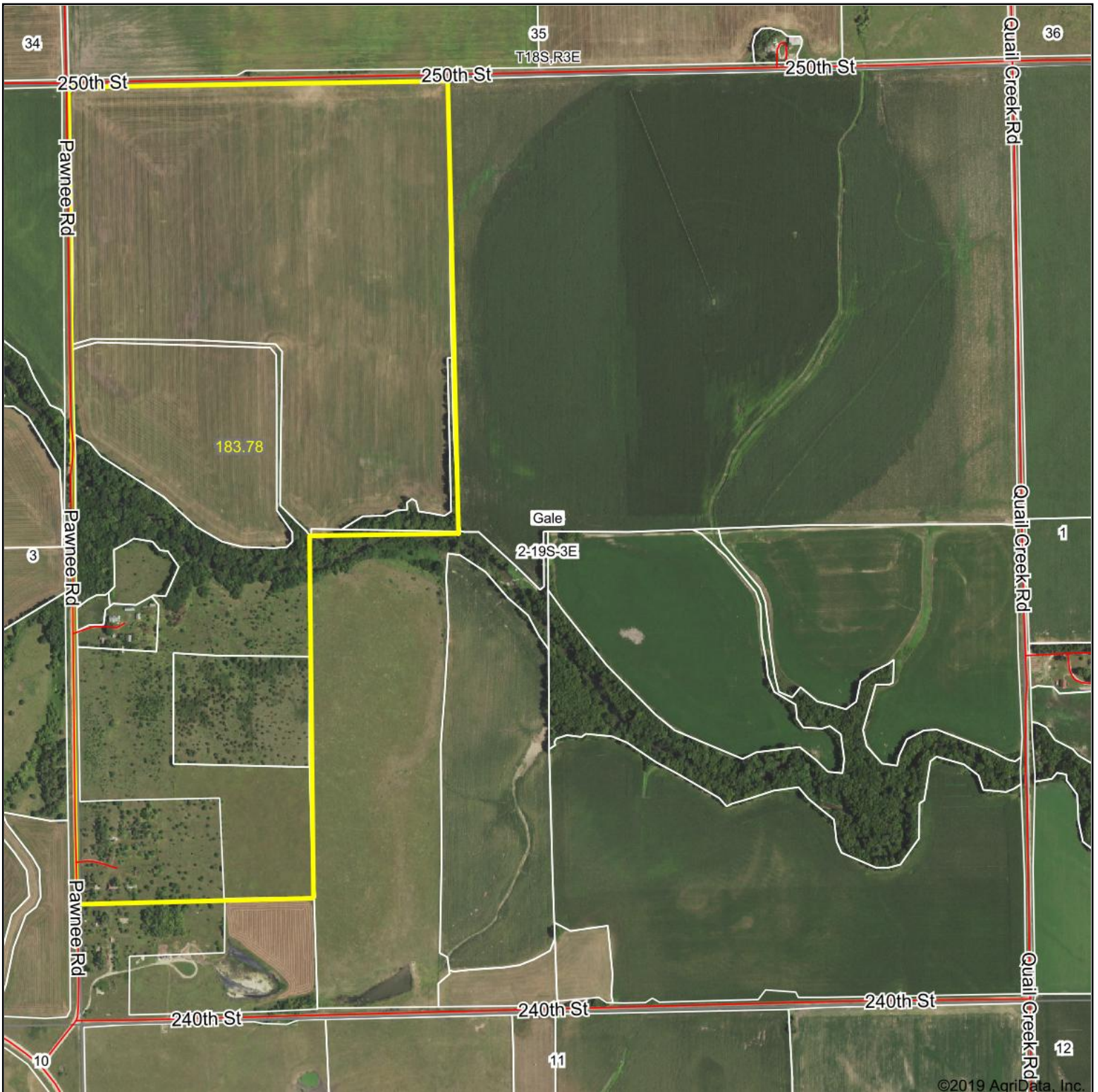
1/30/2019

Maps Provided By:



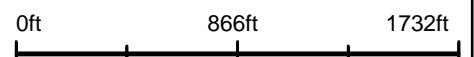
© AgriData, Inc. 2019 www.AgriDataInc.com

Aerial Map

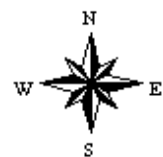


©2019 AgriData, Inc.

map center: 38° 25' 40.16, -97° 4' 4.54



2-19S-3E
Marion County
Kansas

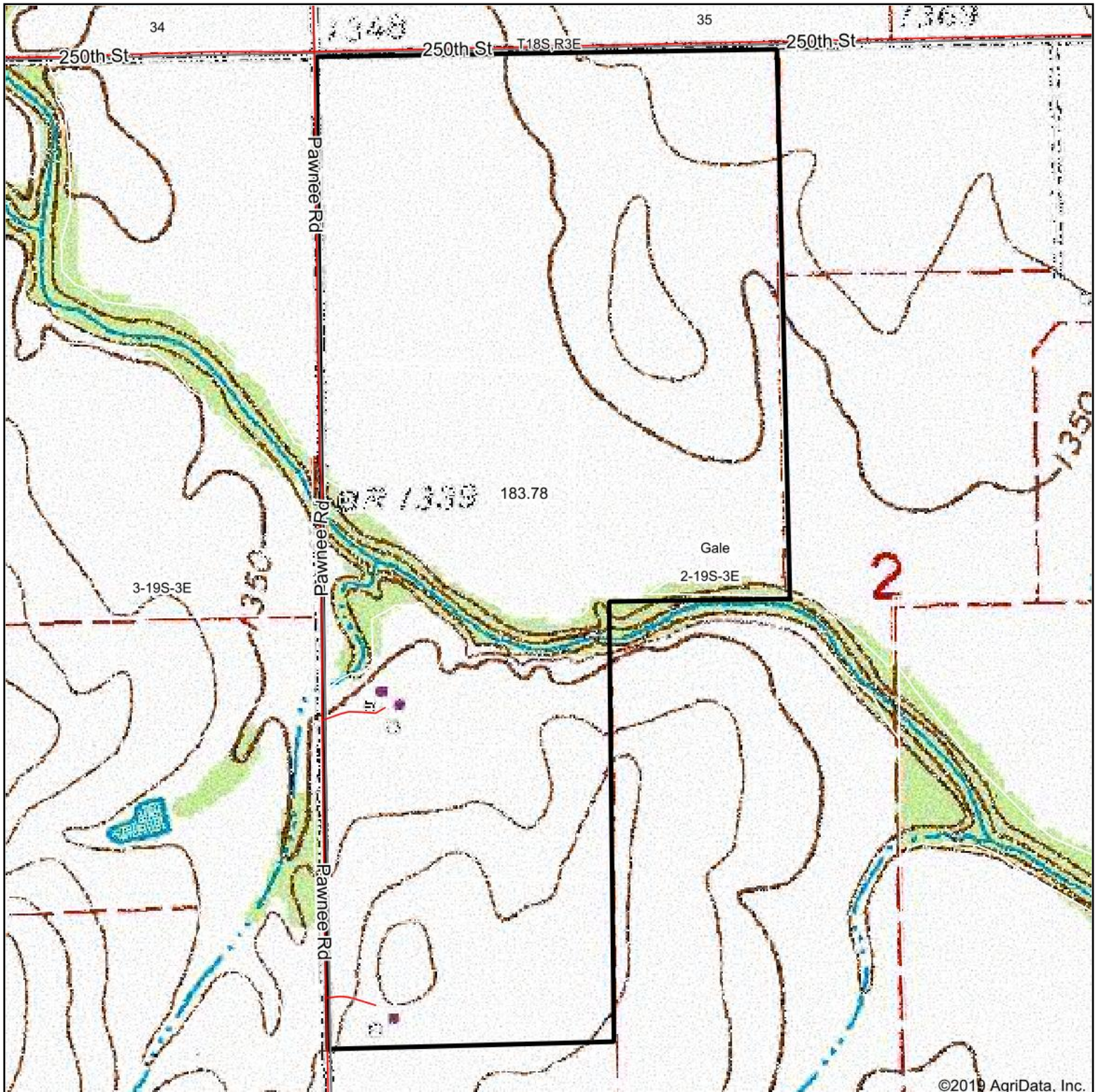


Maps Provided By:

CUSTOMIZED ONLINE MAPPING
© AgriData, Inc. 2019 www.AgriDataInc.com

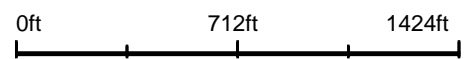
1/30/2019

Topography Map

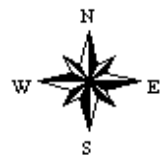


©2019 AgriData, Inc.

map center: 38° 25' 43.59, -97° 4' 24.57



2-19S-3E
Marion County
Kansas

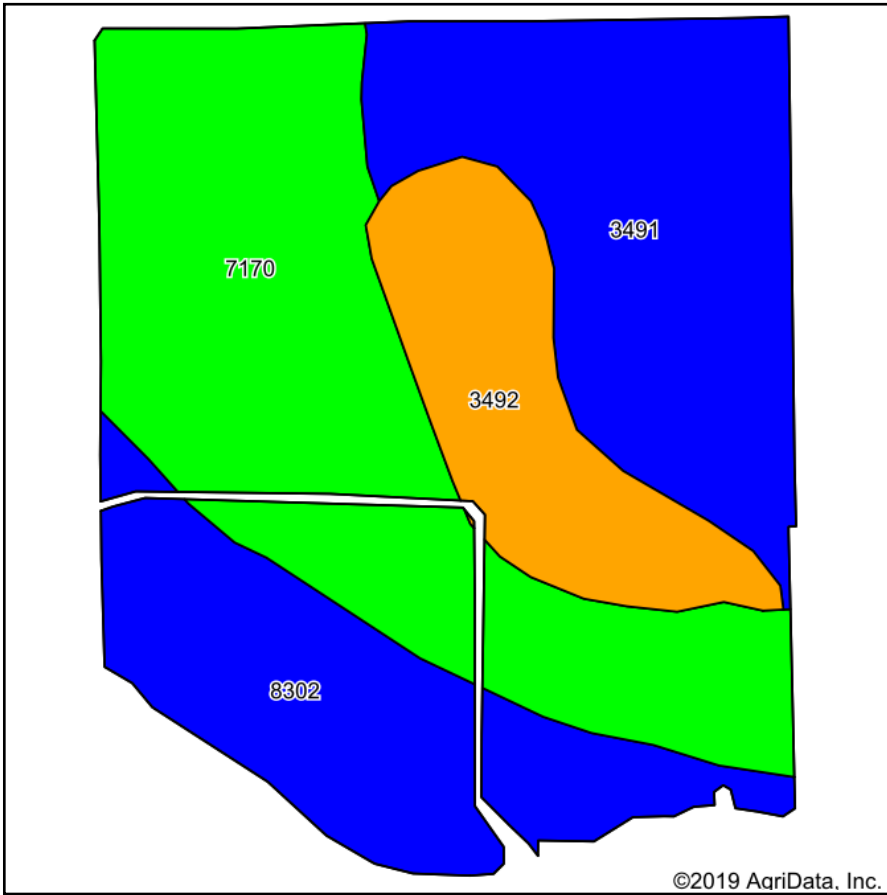


1/30/2019

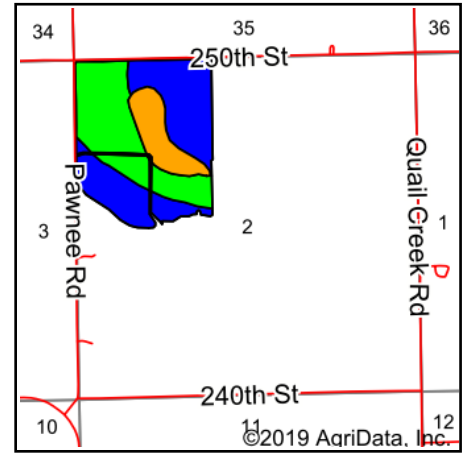
Maps Provided By:

CUSTOMIZED ONLINE MAPPING
© AgriData, Inc. 2019 www.AgriDataInc.com

Soils Map



Soils data provided by USDA and NRCS.







State: **Kansas**
 County: **Marion**
 Location: **2-19S-3E**
 Township: **Gale**
 Acres: **113.29**
 Date: **1/30/2019**

Maps Provided By:

 CUSTOMIZED ONLINE MAPPING
 © AgriData, Inc. 2019 www.AgriDataInc.com



Area Symbol: KS115, Soil Area Version: 15

Code	Soil Description	Acres	Percent of field	Non-Irr Class Legend	Non-Irr Class *c	Irr Class *c	*n NCCPI Soybeans	
7170	Reading silt loam, rarely flooded	43.23	38.2%		Iw	Iw	76	
3491	Wells loam, 1 to 3 percent slopes	30.37	26.8%		Ile	Ile	69	
8302	Verdigris silt loam, 0 to 1 percent slopes, occasionally flooded	23.30	20.6%		IIw		85	
3492	Wells loam, 3 to 7 percent slopes	16.39	14.5%		IIIe	IIIe	68	
Weighted Average								*n 74.8

*n: The aggregation method is "Weighted Average using major components"

*c: Using Capabilities Class Dominant Condition Aggregation Method

Soils data provided by USDA and NRCS.