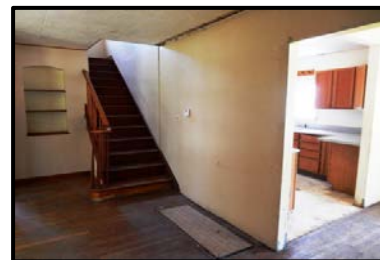

NEW LISTING

3 BEDROOM, 2 BATHROOM



301 ELM ST, ELMDALE

- 3 Bedrooms
- 2 Bathrooms
- Built in 1935
- CH / CA
- 1,470 sq. ft.
- 100' x 140' corner lot

Description: 301 Elm St. Elmdale. 3 bedroom, 2 bathroom, 1 1/2 story home built in 1935. CH/CA, 1,470 sq. ft., full unfinished basement. Corner of lot of 100' x 140'. Potential income property, starter home or flip. Come fix it up the way you like it.

\$11,900

*For more photos,
see our website at:
www.GriffinRealEstateAuction.com*

Heidi Maggard
620-794-8813

**Griffin
Real Estate**



**& Auction
Service LC**

Office:
305 Broadway,
Cottonwood Falls, KS 66845
Phone: 620-273-6421
Fax: 620-273-6425
Toll Free: 1-866-273-6421

RICK GRIFFIN
Broker/Auctioneer
Cell: 620-343-0473

www.GriffinRealEstateAuction.com

Email: griffin123r@gmail.com
